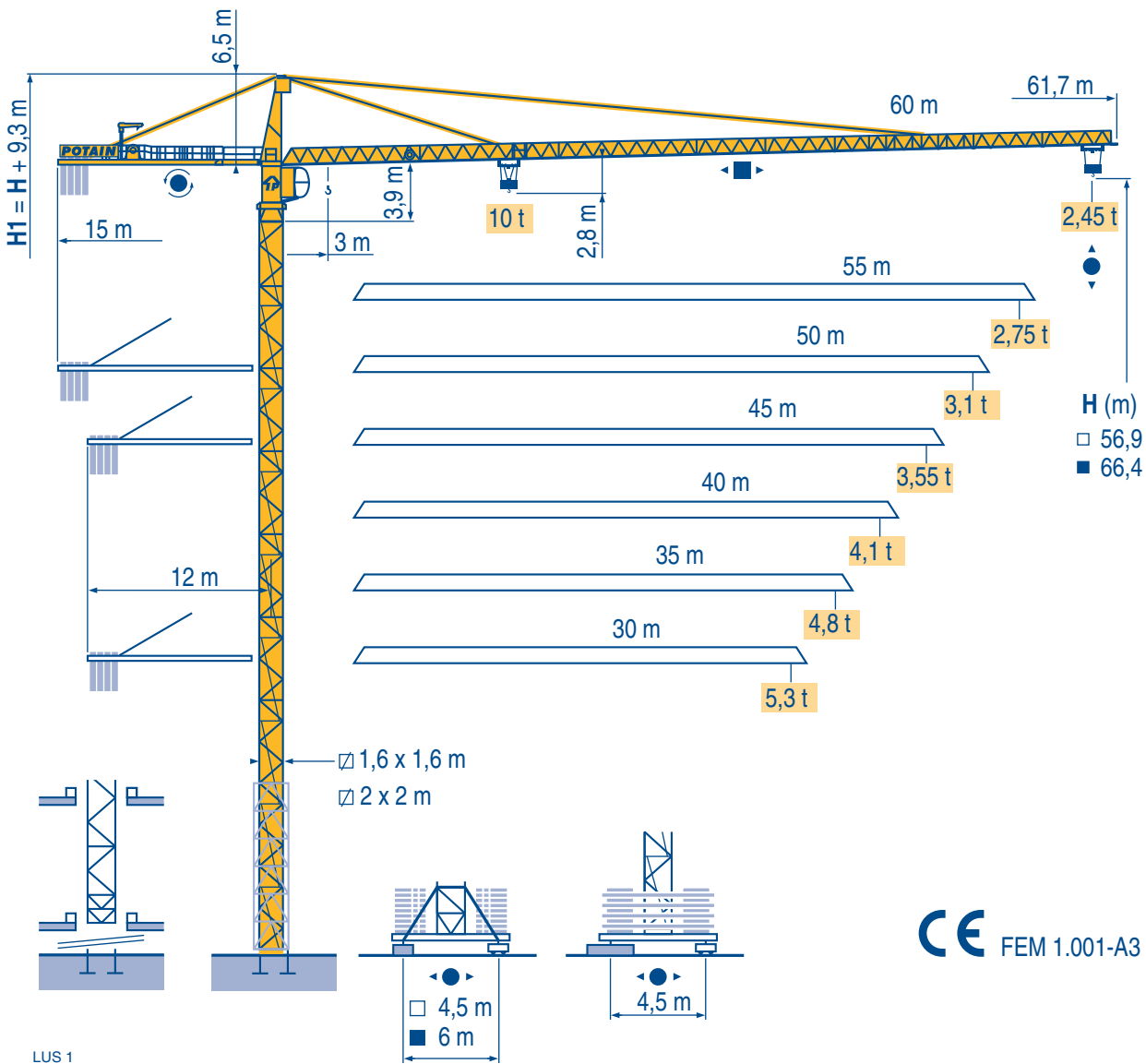


TOPKIT MD 208



Igo
HD
HDM



HDT



GTMR



CITY CRANE



TOPKIT MD
MAXI MD



MAXI TOPKIT



Topless MDT



MR



CE FEM 1.001-A3

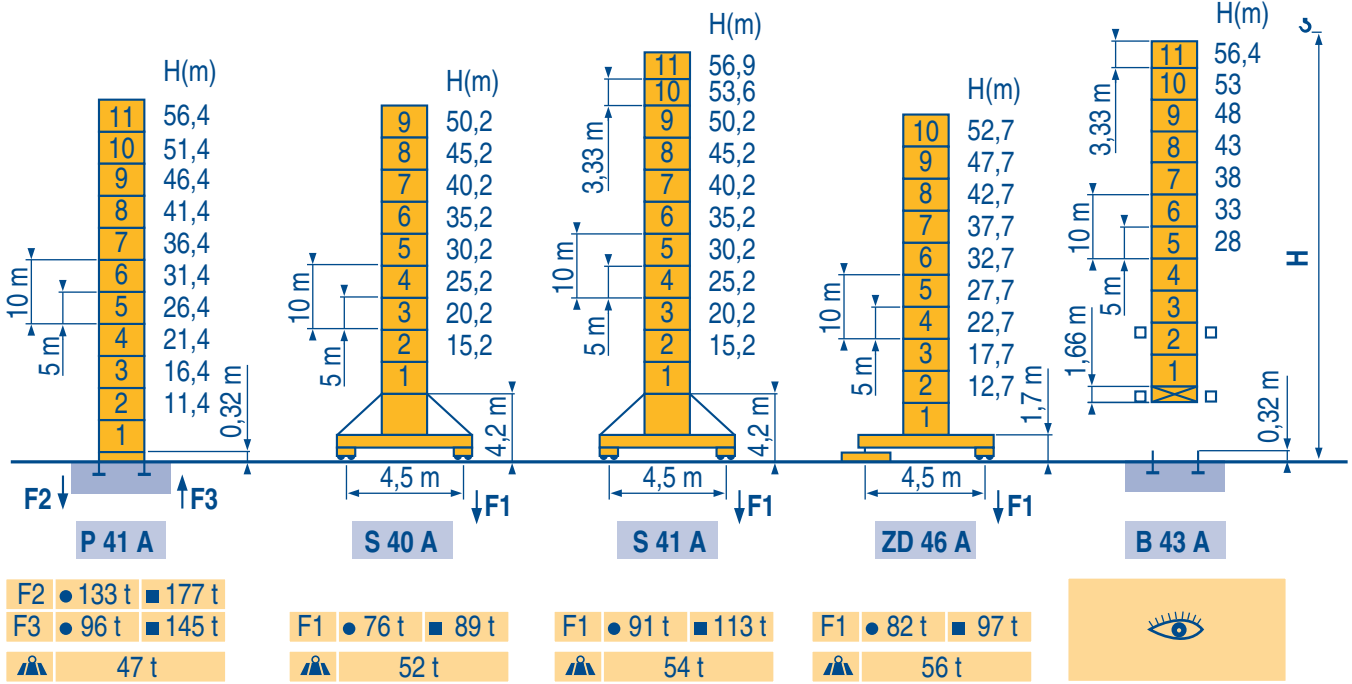


POTAIN 



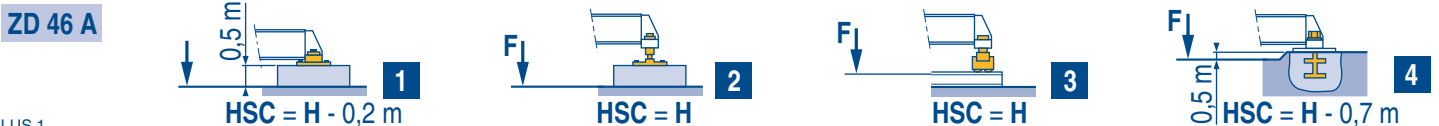
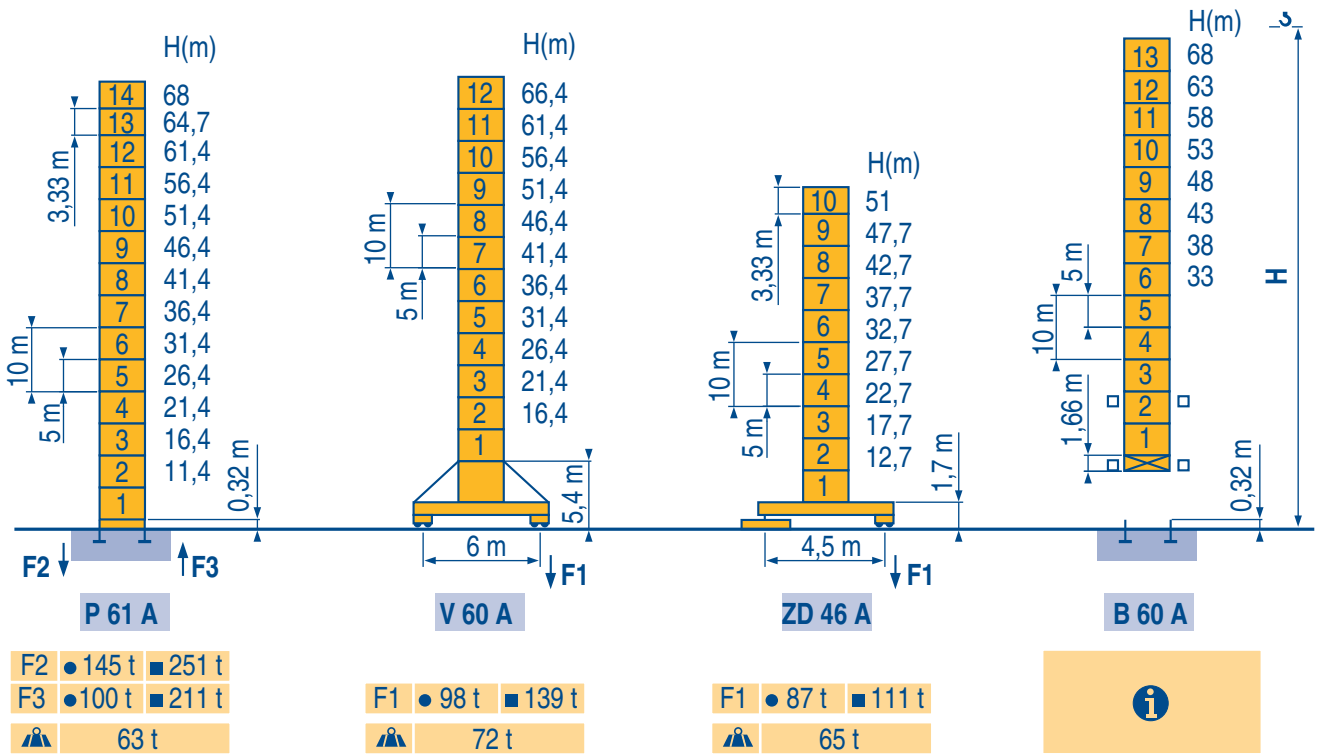
1,6 m
MD 208

30 m → 60 m

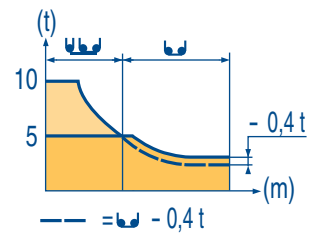


2 m
MD 208

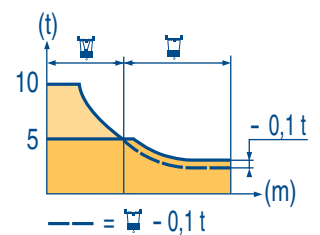
30 m → 60 m



60 m	3,1 ▶	16,9	20	22	25	27	30	30,6	32,7	35	37	40	42	45	47	50	52	55	57	60 m
		10	8,2	7,4	6,4	5,8	5,1	5	5	4,6	4,3	4	3,8	3,5	3,3	3,1	2,9	2,7	2,6	2,45 t
55 m	3,1 ▶	17	20	22	25	27	30	30,8	32,9	35	37	40	42	45	47	50	52	55 m		
		10	8,3	7,5	6,4	5,9	5,2	5	5	4,7	4,4	4	3,8	3,5	3,3	3,1	2,9	2,75 t		
50 m	3,1 ▶	17,1	20	22	25	27	30	31	33,1	35	37	40	42	45	47	50 m				
		10	8,4	7,5	6,5	5,9	5,2	5	5	4,7	4,4	4	3,8	3,5	3,3	3,1 t				
45 m	3,1 ▶	17,3	20	22	25	27	30	31,3	33,4	35	37	40	42	45 m						
		10	8,5	7,6	6,5	6	5,3	5	5	4,7	4,5	4,1	3,8	3,55 t						
40 m	3,1 ▶	17,4	20	22	25	27	30	31,5	33,6	35	37	40 m								
		10	8,5	7,6	6,6	6	5,3	5	5	4,8	4,5	4,1 t								
35 m	3,1 ▶	17,5	20	22	25	27	30	31,6	33,8	35 m										
		10	8,6	7,7	6,6	6	5,3	5	5	4,8 t										
30 m	3,1 ▶	17,5	20	22	25	27	30 m													
		10	8,6	7,7	6,6	6	5,3 t													



60 m	2,4 ▶	17	20	22	25	27	30	30,9	31,5	32	35	37	40	42	45	47	50	52	55	57	60 m
		10	8,3	7,4	6,4	5,9	5,2	5	5	4,9	4,4	4,1	3,8	3,5	3,3	3,1	2,9	2,7	2,5	2,4	2,25 t
55 m	2,4 ▶	17,1	20	22	25	27	30	31,1	31,7	32	35	37	40	42	45	47	50	52	55 m		
		10	8,4	7,5	6,5	5,9	5,2	5	5	4,9	4,5	4,2	3,8	3,6	3,3	3,1	2,9	2,7	2,55 t		
50 m	2,4 ▶	17,2	20	22	25	27	30	31,3	31,9	32	35	37	40	42	45	47	50 m				
		10	8,4	7,5	6,5	6	5,3	5	5	4,9	4,5	4,2	3,8	3,6	3,3	3,1	2,9 t				
45 m	2,4 ▶	17,4	20	22	25	27	30	31,6	32,2	35	37	40	42	45 m							
		10	8,5	7,6	6,6	6	5,3	5	5	4,5	4,2	3,9	3,6	3,35 t							
40 m	2,4 ▶	17,5	20	22	25	27	30	31,8	32,4	35	37	40 m									
		10	8,6	7,7	6,6	6,1	5,4	5	5	4,6	4,3	3,9 t									
35 m	2,4 ▶	17,6	20	22	25	27	30	32	32,6	35 m											
		10	8,6	7,7	6,7	6,1	5,4	5	5	4,6 t											
30 m	2,4 ▶	17,6	20	22	25	27	30 m														
		10	8,6	7,7	6,7	6,1	5,4 t														

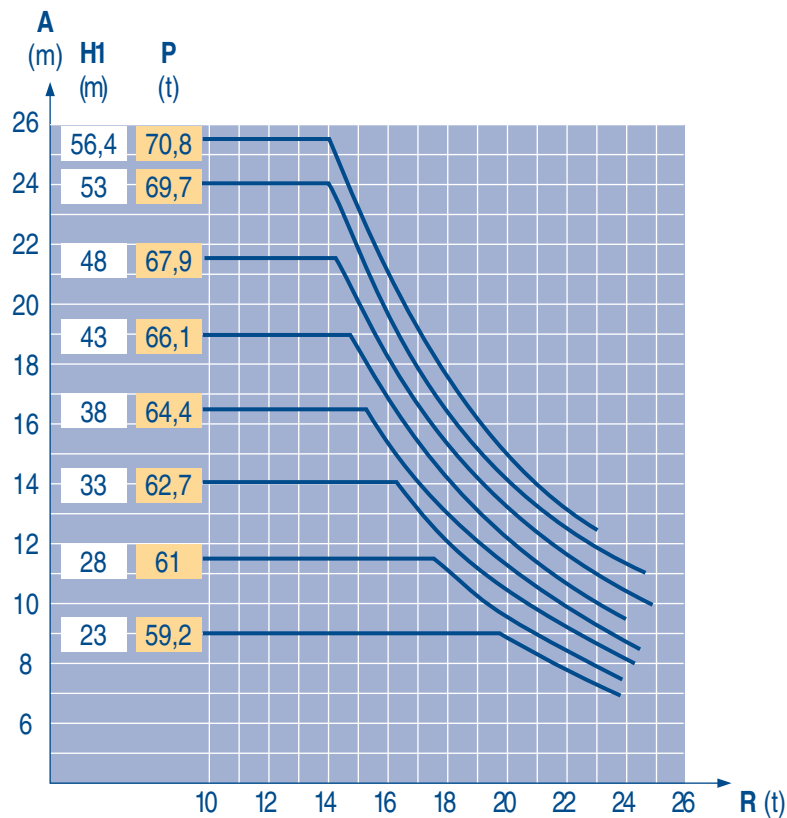
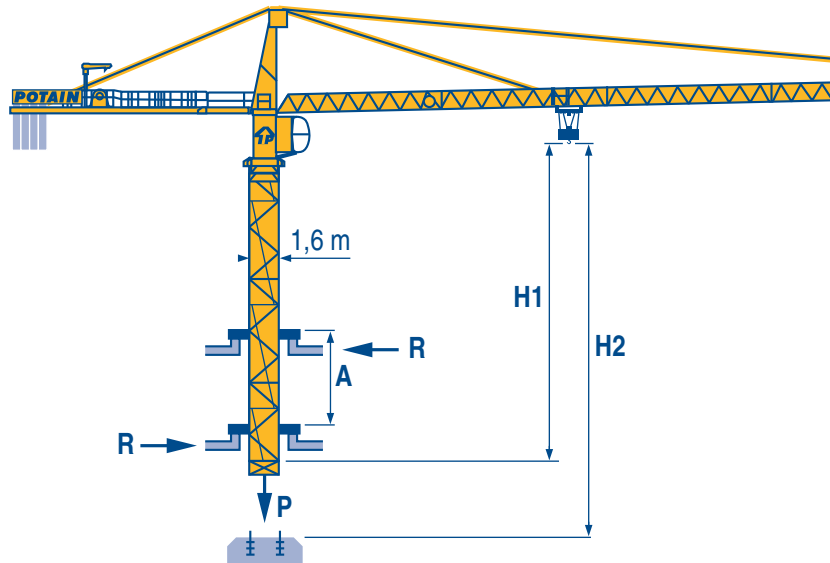


LUS 1

	Voir télescopage sur dalles	F	Siehe Kletterkrane im Gebäude	D	See climbing crane	GB	Vea grua trepadora	E	Consultare gru in cavedio	I	Ver telescopagem sobre lages	P
●	Réactions en service		Reaktionskräfte in Betrieb		Reactions in service		Reacciones en servicio		Reazioni in servizio		Reações em serviço	
■	Réactions hors service		Reaktionskräfte außer Betrieb		Reactions out of service		Reacciones fuera de servicio		Reazioni fuori servizio		Reações fora de serviço	
	A vide sans lest (ni train de transport) avec flèche et hauteur maximum.		Ohne Last, Ballast (und Transportachse), mit Maximalausleger und Maximalhöhe.		Without load, ballast (or transport axles), with maximum jib and maximum height.		Sin carga, sin lastre, (ni tren de transporte), flecha y altura máxima.		A vuoto, senza zavorra (ne assali di trasporto) con braccio massimo e altezza massima.		Sem carga (nem trem de transporte)-sem lastro com lança e altura máximas.	
i	Nous consulter		Auf Anfrage		Consult us		Consultarnos		Consultateci		Consultar-nos	

B 43 A

B 60 A **i**



LUS 1

A	Distance entre cadres F	Abstand zwischen den Rahmen D	Distance between collars GB	Distancia entra marcos E	Distanza fra i telai I	Distância entre quadros P
H1	Hauteur grue	Kranhöhe	Crane height	Altura grúa	Altezza gru	Altura da grua
P	Poids de la grue (en service)	Krangewicht (in Betrieb)	Crane weight (in service)	Peso de la grúa (en servicio)	Peso della gru (in servizio)	Peso da grua (em serviço)
R	Réaction horizontale	Horizontalkräfte	Horizontal reaction	Reaccion horizontal	Reazione orizzontale	Reacção horizontal
i	Nous consulter	Auf Anfrage	Consult us	Consultarnos	Consultateci	Consultar-nos

Lest de contre-flèche
Gegenauslegerballast



Counter-jib ballast
Lastre de contra flecha



Contrappeso
Lastros da contra lança



Lest de contre-flèche	4200 - 3400 - 2300 kg		4200 - 700 kg	
	33 LVF/50 LVF	kg	33 LVF/50 LVF	kg
60 m	15 m	16 800	15 m	16 100
55 m	15 m	14 100	15 m	14 000
50 m	15 m	13 300	15 m	12 600
45 m	12 m	16 000	12 m	16 100
40 m	12 m	14 900	12 m	14 700
35 m	12 m	12 600	12 m	12 600
30 m	12 m	11 000	12 m	11 200

LUS 1

Lest de base
Grundballast



Base ballast
Lastre de base



Zavorra di base
Lastros da base



1,6 m	S 40 A	H (m)	50,2	45,2	40,2	35,2	30,2	25,2	20,2	15,2			
			(t)	78	60	60	60	60	60	60	60		
1,6 m	S 41 A	H (m)	56,9	53,6	50,2	45,2	40,2	35,2	30,2	25,2	20,2	15,2	
			(t)	114	96	78	60	60	60	60	60	60	60
1,6 m	ZD 46 A	H (m)	52,7	47,7	42,7	37,7	32,7	27,7	22,7	17,7	12,7		
			(t)	90	65	55	55	55	55	55	55	55	
2 m	V 60 A	H (m)	66,4	61,4	56,4	51,4	46,4	41,4	36,4	31,4	26,4	21,4	16,4
			(t)	132	108	84	60	48	24	24	24	24	24
2 m	ZD 46 A	H (m)	51,1	47,7	42,7	37,7	32,7	27,7	22,7	17,7	12,7		
			(t)	95	80	50	50	50	50	50	50	50	

LUS 1

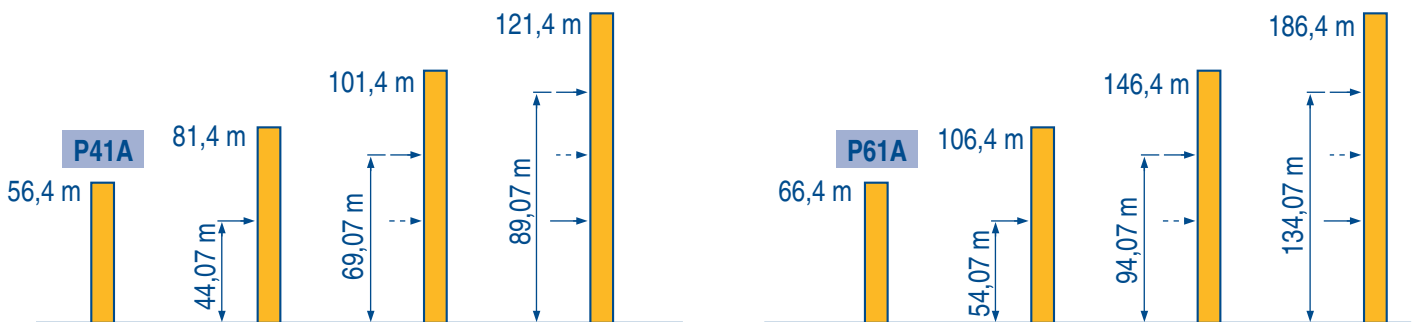
Ancrages
Verankerungen











Anchorage
Anclaje

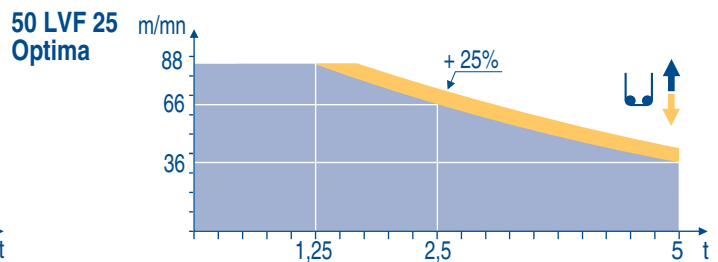
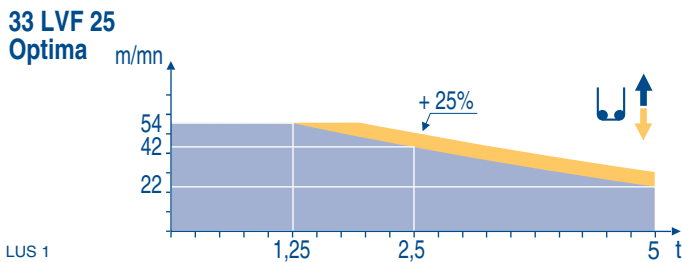






































Ancoraggio
Ancoragem




LUS 1

		LUS ↑						LUS ↑						ch - PS hp	kW		
▲	33 LVF 25 Optima	m/min	1,8	7,4	22	28	42	54	0,9	3,7	11	14	21	27	30	22	297 m
	t	5	5	5	3,75	2,5	1,25	10	10	10	7,5	5	2,5				
▼	50 LVF 25 Optima	m/min	3	12	36	46	66	88	1,5	6	18	23	33	44	50	37	557 m
	t	5	5	5	3,75	2,5	1,25	10	10	10	7,5	5	2,5				
◀ ▶	6 DVF 4	m/min	0 → 58 (10 t)			0 → 76 (8 t)			0 → 100 (6 t)			5,5	4				
	RVF 152 Optima	tr/min U/min rpm	0 → 0,8												2 x 5,5	2 x 4	
	S 40 A RT 324 R 10 m	m/min	12,5 - 25												2 x 7	2 x 5,2	
	S 41 A RT 443 A1 2V R 10 m	m/min	15 - 30												4 x 5	4 x 3,7	
	ZD 46 A RT 443 A1 2V	m/min	15 - 30												4 x 5	4 x 3,7	
	V 60 A RT 544 A1 2V R 13 m	m/min	13,5 - 27												4 x 7	4 x 5,2	
CEI 38		IEC 38	STANDARD			kVA			PILOT								
400 V (+6% -10%) 50 Hz			33 LVF : 50 kVA 50 LVF : 70 kVA			-			50 LVF : 70 kVA			84/534 - 87/405					



	Levage	F		Heben	D		Hoisting	GB		Elevación	E		Sollevamento	I		Elevação	P
	Distribution			Katzfahren			Trolleying			Distribución			Distribuzione			Distribuição	
	Orientation			Schwenken			Slewing			Orientación			Rotazione			Rotação	
	Translation			Kranfahren			Travelling			Traslación			Traslazione			Translação	
	Conforme aux directives CEE 84/534 et 87/405 sur le niveau acoustique			Gemäss EWG-Richtlinien 84/534 und 87/405 für den Schall-Leistungspegel			In compliance with the EEC 84/534 and 87/405 Instructions on noise level			Conforme con las directivas CEE 84/534 y 87/405 sobre el nivel acústico			Conforme alle direttive CEE 84/534 e 87/405 sul livello acustico			Conforme as directivas CEE 84/534 e 87/405 sobre o nível acústico	
	Fonction Dialog Pilot possible			Funktion Dialog Pilot möglich			Dialog Pilot function possible			Funcion Dialog Pilot Posible			Possibilità di funzione Dialog Pilot			Função Dialog Pilot possível	

 Document commercial non contractuel. Pour toute information technique se référer à la notice correspondante

Unverbindliches Vertriebsdokument. Für technische Informationen, siehe die entsprechenden Anweisungen.

This commercial document is not legally binding. For any technical information, please refer to the corresponding instructions.

Documento comercial no contractuel. Para cualquier información técnica, ver la noticia correspondiente.

Documento commerciale non vincolante. Per tutte le informazioni tecniche fare riferimento al catalogo istruzioni

Documento comercial não contratual. Para qualquer informação técnica complementar consultar as respectivas instruções

BISCHAG

Bau- und Industriekräne
Verkauf-Vermietung-Service
Hebebühnen
Scheren-Bühnen
Teleskop-Arbeitsbühnen
Verkauf-Vermietung
Transporte
Spezialtransporte
Greifearbeiten
Seilwindarbeiten
LKW mit Ladekran

Grienstrasse 17
4227 Büsserach
Telefon 061 781 55 11
Fax 061 781 55 12
www.bischag.ch



POTAIN 

18.Rue de Charbonnières, B.P. 173
F-69132 ECULLY Cedex
Tél. (33)04.72.18.20.20
Fax (33)04.72.18.20.00
http://www.potain.com
E-mail : mkt@potain.fr



Manitowoc Crane Group

Deutschland
POTAIN GmbH
Tel : 06.1.05.70.40

Italia
POTAIN S.p.A.
Tel : 0.331.49.33.11

Portugal
POTAIN Portugal
Tel : 22.968.08.89

Singapore
MANITOWOC POTAIN PTE LTD
Tel : 227.15.50

Copyright.Reproduction interdite © POTAIN 2000

TOPKIT MD 208
Réf. 2001.03 LUS 3

Reserva de modificações / Modifiche riservate / Modificaciones reservadas / Subject to modification / Änderungen vorbehalten / Modifications réservées / Printed in France / Réalisation HeadLines



SERVICE



VERMIETUNG



VERKAUF



Bau- und Industriekrane
LKW-Kranarbeiten
Spezialtransporte
Hydraulikservice
Arbeitsbühnen
Teleskoplader



Wahlenstrasse 175
4242 Laufen



061 781 55 11



info@bischag.ch

