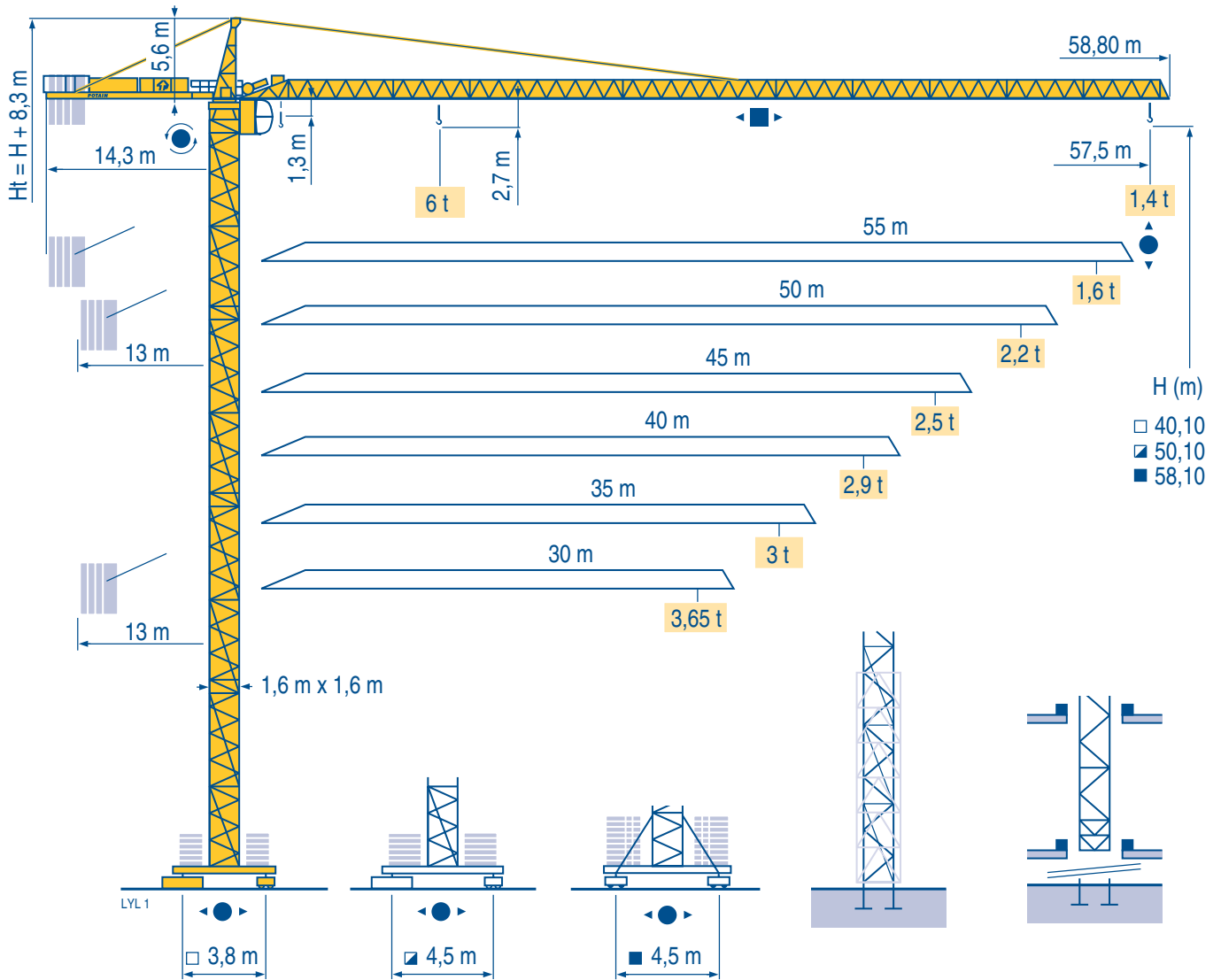


## MD 125 B

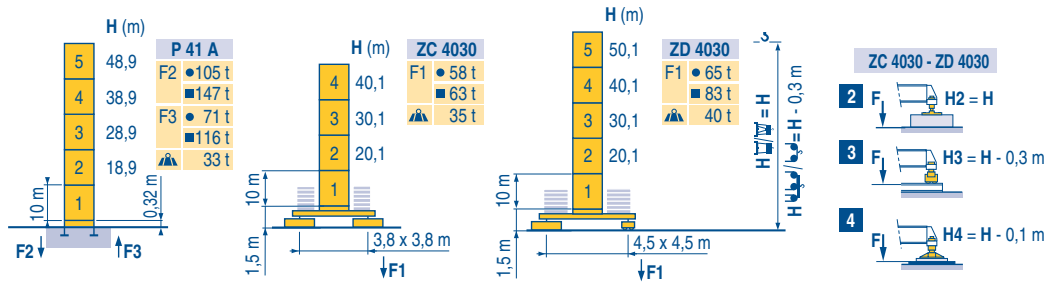


### CITY CRANE

CE FEM 1.001-A3

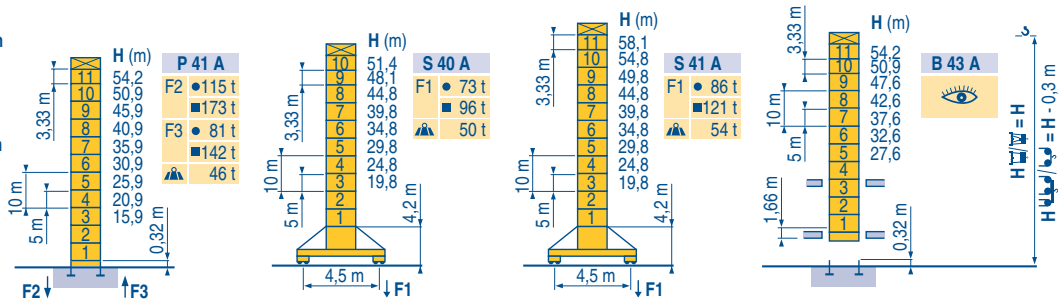
Mat / Réactions City 1,6 m

Maste /  
Eckdrücke  
Masts /  
Reactions  
Reactions  
Mástil /  
Reacciones  
Torre / Reazioni  
Tramo /  
Reacções



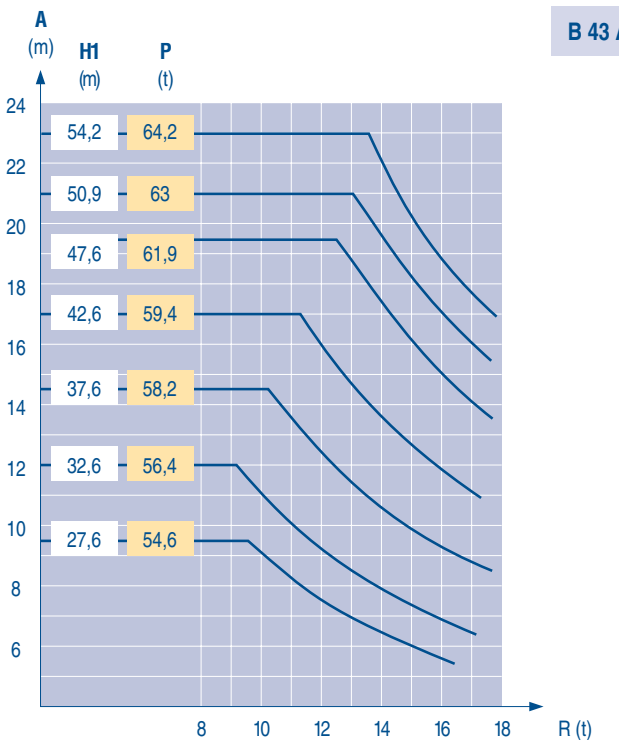
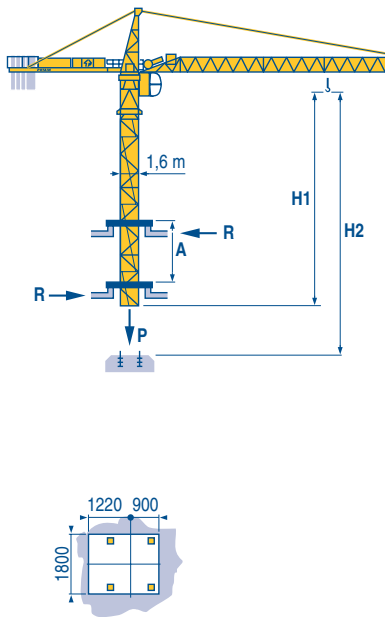
LVL1

Télescopable 1,6 m  
Teleskopierbar 1,6 m  
Telescopic 1,6 m  
Telescopico 1,6 m  
Telescopagem 1,6 m



Télescopage sur dalles  
Kletterkrane im Gebäude  
Climbing crane  
Telescopage gruas trepadoras  
Gru in cavedio  
Telescopagem sobre lajes

LVL1



CITY CRANE  
MD 125 B

POTAIN



**F**  
Réactions en service  
Réactions hors service  
A vide sans lest (ni train de transport) avec flèche et hauteur maximum.

**D**  
Reaktionskräfte in Betrieb  
Reaktionskräfte außer Betrieb  
Ohne Last, Ballast (und Transportachse), mit Maximalausleger und Maximalhöhe.

**GB**  
Reactions in service  
Reactions out of service  
Without load, ballast (or transport axes), with maximum jib and maximum height.

**E**  
Reacciones en servicio  
Reacciones fuera de servicio  
Sin carga, sin lastre, (ni tren de transporte), flecha y altura máxima.

**I**  
Reazioni in servizio  
Reazioni fuori servizio  
A vuoto, senza zavorra (ne assali di trasporto) con braccio massimo e altezza massima.

**P**  
Reacções em serviço  
Reacções fora de serviço  
Sem carga (nem trem de transporte)- sem lastro com lança e altura máximas.

## Courbes de charges

### Lastkurven

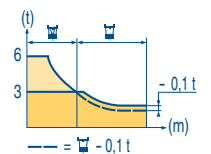
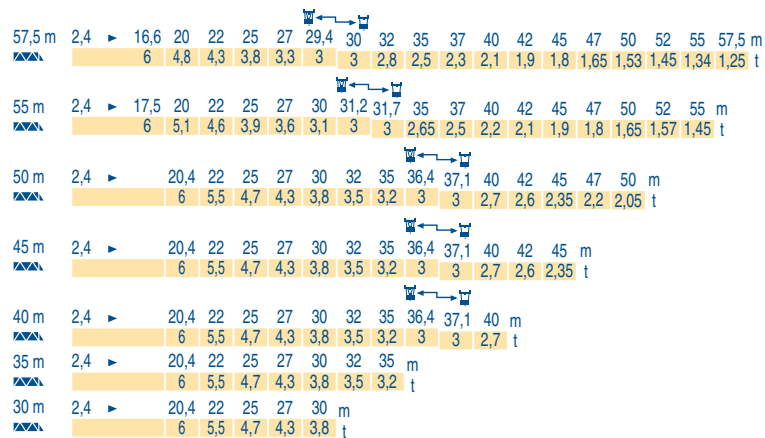
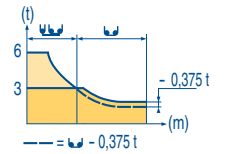
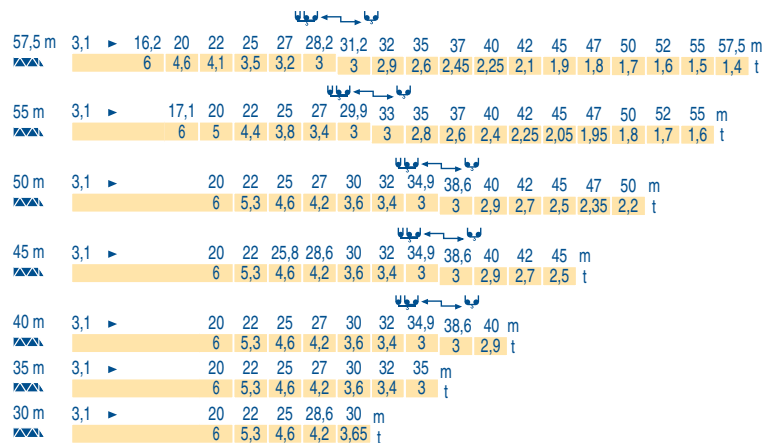
### Load diagrams

### Curvas de cargas

### Curve di carico

### Curva de cargas

LVL 1



## Lest de contre-flèche

### Gegenauslegerballast

### Counter-jib ballast

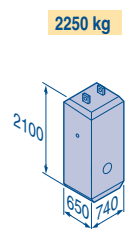
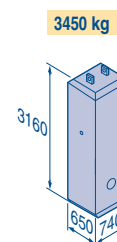
### Lastre de contra flecha

### Contrappeso

### Lastros da contra lança

LVL 1

		3450 kg	2250 kg	▲ (kg)
57,5 m	14,3 m	5	-	17 250
55 m	14,3 m	4	1	16 050
50 m	13 m	4	1	16 050
45 m	13 m	3	2	14 850
40 m	13 m	4	-	13 800
35 m	13 m	3	1	12 600
30 m	13 m	2	2	11 400



## Lest de base

### Grundballast

### Base ballast

### Lastre de base

### Zavorra di base

### Lastros da base

LVL 1

□1,6 m	ZC 4030 - ● -	H (m)	40,1	30,1	20,1						
		▲ (t)	70	65	60						
□1,6 m	ZD 4030 - ● -	H (m)	50,1	40,1	30,1	20,1					
		▲ (t)	70	55	45	45					
□1,6 m	S 40 A - ● -	H (m)	51,4	48,1	44,8	39,8	34,8	29,8	24,8	19,8	
		▲ (t)	84	72	54	48	42	42	42	36	
□1,6 m	S 41 A - ● -	H (m)	58,1	54,8	49,8	44,8	39,8	34,8	29,8	24,8	19,8
		▲ (t)	114	102	78	54	48	42	42	42	36

## CITY CRANE

### MD 125 B

POTAIN®

A

Distance entre cadres

F

Abstand zwischen den

D

Distance between collars

GB

Distancia entra marcos

E

Distanza fra i telai

I

Distância entre quadros

P

H1

Hauteur grue

Kranhöhe

Crane height

Altura grúa

Altezza gru

Altura da grua

P

Poids de la grue(en service)

Krangewicht (in Betrieb)

Crane weight (in service)

Peso de la grúa (en servicio)

Peso della gru (in servizio)

Peso da grua (em serviço)

R

Réaction horizontale

Horizontalkräfte

Horizontal reaction

Reaccion horizontal

Reazione orizzontale

Reacção horizontal

👁️

Voit télescopage sur dalles

Siehe Kletterkrane im Gebäude

See climbing crane





Veja grua trepadora

Consultare gru in cavedio

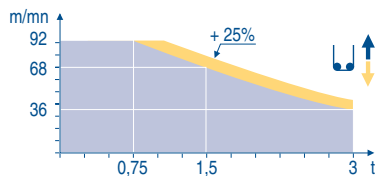
Ver telescopagem sobre lages






Mécanismes  
Antriebe  
Mechanisms  
Meccanismi  
Mecanismos


LYL 1

		↑						↑↑						ch - PS hp	kW		
▲	33 LVF 15 Optima	m/min	3 → 12 → 36 → 48 → 68 → 92						1,5 → 6 → 18 → 24 → 34 → 46						30	22	260 m
		t	3	3	3	2,25	1,5	0,75	6	6	6	4,5	3	1,5			
◀ ▶	4 D3 V3	m/min	15 - 30 - 58												4	3	
	RCV 145	tr/min U/min rpm	0 → 0,8												2 x 6	2 x 4,4	
ZC 4030 ZD 4030	RT 224	m/min	25												2 x 4	2 x 2,9	
◀ ▶	S 40 A R ≥ 10 m	m/min	12,5 - 25												2 x 7	2 x 5,2	
◀ ▶	S 41 A A1 2V R ≥ 10 m	m/min	15 - 30												4 x 5	4 x 3,7	
CEI 38		IEC 38	kVA														
400 V (+6% -10%) 50 Hz			33 LVF : 50 kVA						2000/14								

33 LVF 15  
Optima



	F	D	GB	E	I	P
	Levage	Heben	Hoisting	Elevación	Sollevamento	Elevação
	Distribution	Katzfahren	Trolleying	Distribución	Distribuzione	Distribuição
	Orientation	Schwenken	Slewing	Orientación	Rotazione	Rotação
	Translation	Kranfahren	Travelling	Traslación	Traslazione	Translação
	Conforme aux directives CEE sur le niveau acoustique	Gemäss EWG-Richtlinien für den Schall-Leistungspegel	In compliance with the EEC Instructions on noise level	Conforme con las directivas CEE sobre el nivel acústico	Conforme alle direttive CEE sul livello acustico	Conforme as directivas CEE sobre o nível acústico

 Document commercial non contractuel. Pour toute information technique se référer à la notice correspondante

Unverbindliches Vertriebsdokument. Für technische Informationen, siehe die entsprechenden Anweisungen.

This commercial document is not legally binding. For any technical information, please refer to the corresponding instructions.

Documento comercial no contractual. Para cualquier información técnica, ver la noticia correspondiente.

Documento commerciale non vincolante, per tutte le informazioni tecniche fare riferimento al catalogo istruzioni

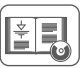



Documento comercial não vinculante. Para qualquer informação técnica complementar consultar as respectivas instruções

BISCHAG

Bau- und Industriekrane  
Verkauf-Vermietung-Service  
Hebebühnen  
Scheren-Bühnen  
Teleskop-Arbeitsbühnen  
Verkauf-Vermietung  
Transporte  
Spezialtransporte  
Greiferarbeiten  
Seilwindarbeiten  
LKW mit Ladekran

**Grienstrasse 17**  
**4227 Büsserach**  
**Telefon 061 781 55 11**  
**Fax 061 781 55 12**  
**www.bischag.ch**

**Manitowoc**  
*Crane CARE*







**Americas**  
Tel: +1 920 683 6322  
Tel: +1 717 597 8121

**Europe - Middle East - Africa**  
Tel: +(33) 4 72 81 50 00  
Tel: +(44) 191 565 6281

**Asia - Pacific**  
Tel: +(65) 6861 7133  
Fax: +(65) 6862 4142

[www.manitowoccrane.com](http://www.manitowoccrane.com)

POTAIN 

*Manitowoc Crane Group*

**18, rue de Charbonnières - B.P.173**  
**69132 ECULLY Cedex - France**

Tél. : (33) 4 72 18 20 20  
Fax. : (33) 4 72 18 20 00  
[www.manitowoccrane.com](http://www.manitowoccrane.com) [www.potain.com](http://www.potain.com)

CITY CRANE MD 125 B

Réf. 2003 48 LYL 1

Copyright.Reproduction interdite © POTAIN 2003

Réalisation HeadLines



SERVICE



VERMIETUNG



VERKAUF



**Bau- und Industriekrane**  
**LKW-Kranarbeiten**  
**Spezialtransporte**  
**Hydraulikservice**  
**Arbeitsbühnen**  
**Teleskoplader**



Wahlenstrasse 175  
4242 Laufen



061 781 55 11



info@bischag.ch

