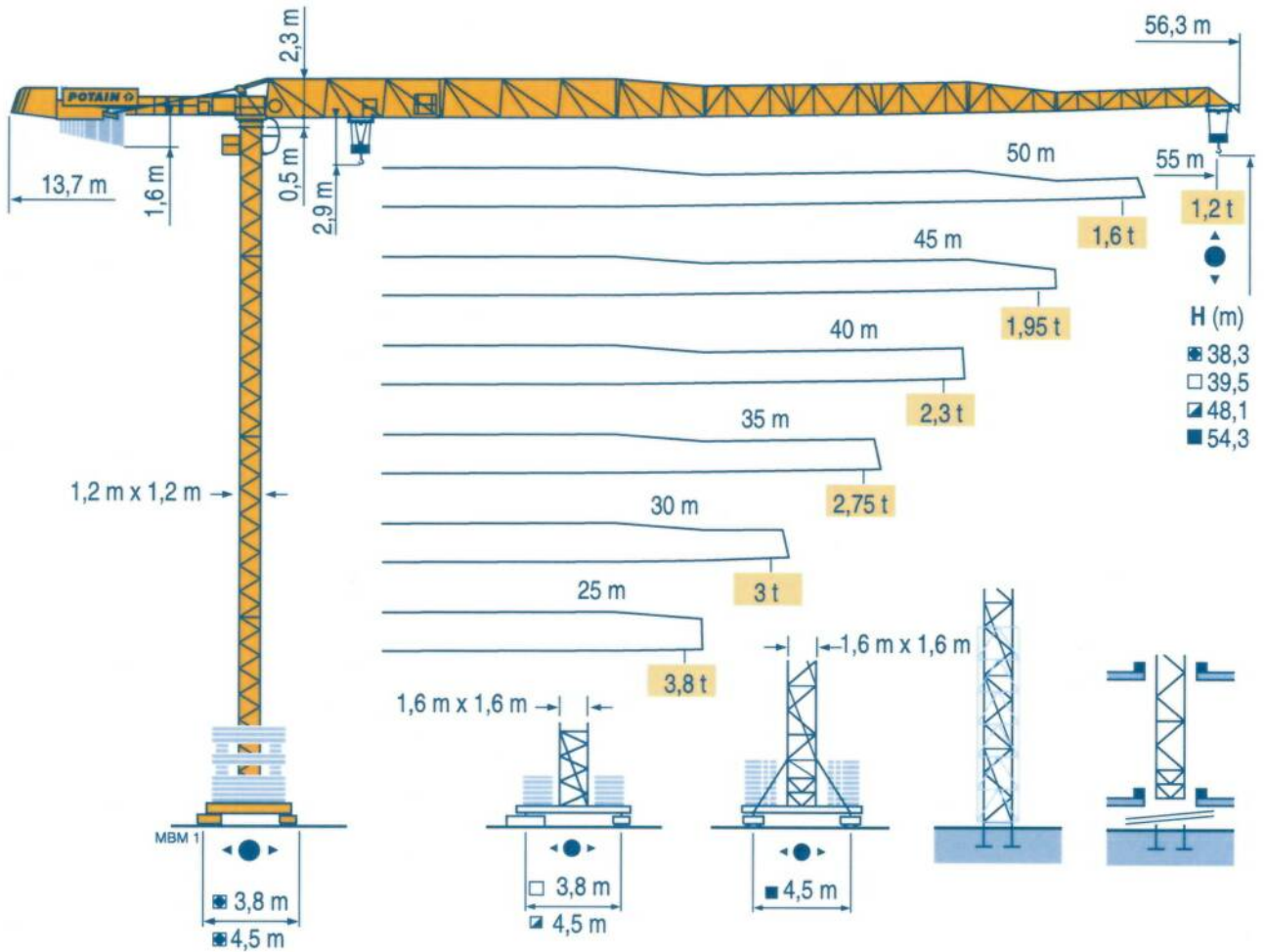


POTAIN 

MDT 98



City Topless

CE FEM 1.001-A3

anifowoc
Crane Group

Above. Beyond. Everywhere.™

Mat / Réactions City 1,2 m

Maste /
Eckdrücke

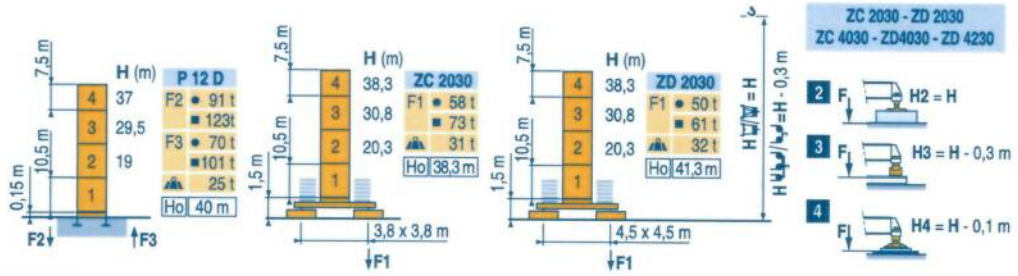
Masts /
Reactions

Mástil /
Reacciones

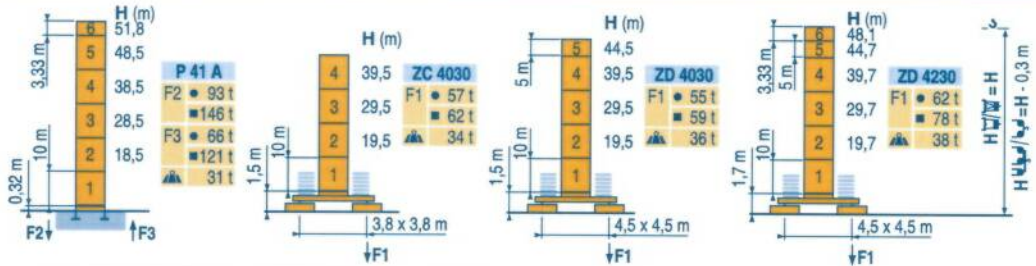
Torre / Reazioni

Tramo /
Reações

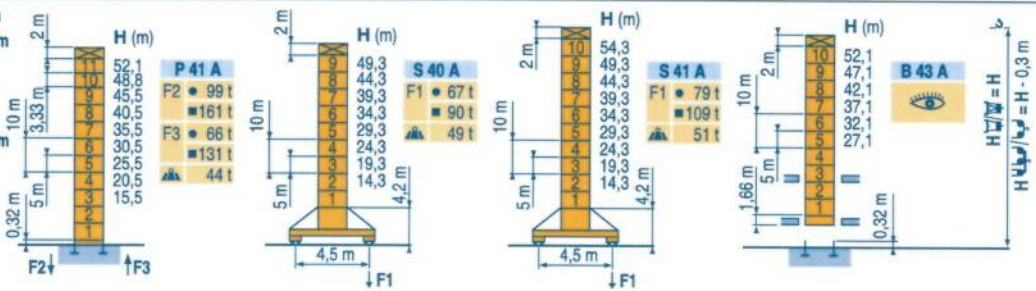
MEM 1



City 1,6 m



Télescopable 1,6 m
Teleskopierbar 1,6 m
Telescopico 1,6 m
Telescopico 1,6 m
Telescopagem 1,6 m



Télescopage sur dalles

Kletterkrane im Gebäude

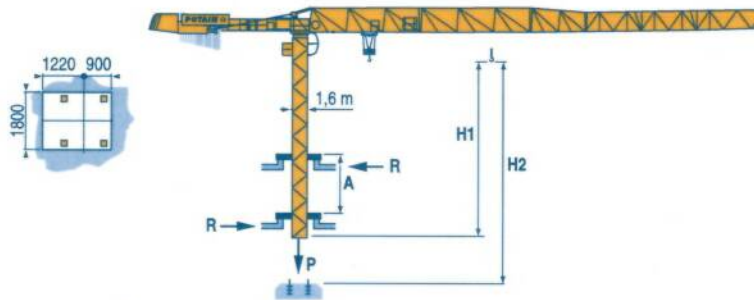
Climbing crane

Telescopage gruas trepadoras

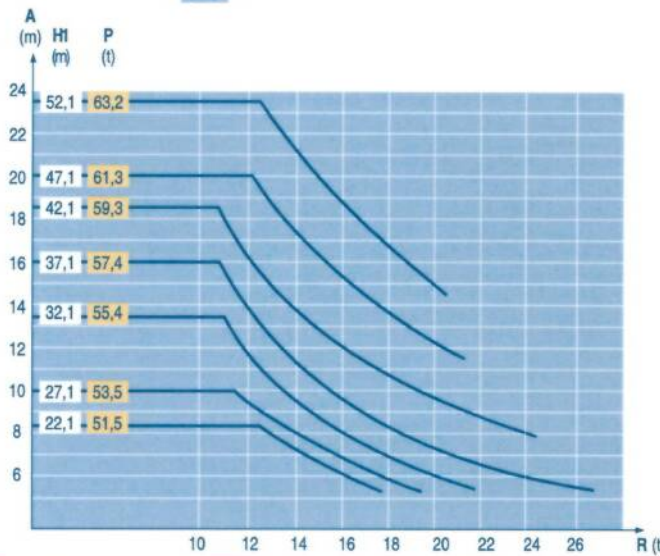
Gru in cavedio

Telescopagem sobre lajes

MEM 1



B 43 A



City Topless
MDT 98

POTAIN

F

Réactions en service

Réactions hors service

A vide sans lest (ni train de transport) avec flèche et hauteur maximum.

Ho

H sans cabine

D

Reaktionskräfte in Betrieb

Reaktionskräfte außer Betrieb

Ohne Last, Ballast (und Transportachse), mit Maximalausleger und Maximalhöhe.

H Ohne Fahrerhaus

GB

Reactions in service

Reactions out of service

Without load, ballast (or transport axes), with maximum jib and maximum height.

H without cab

E

Reacciones en servicio

Reacciones fuera de servicio

Sin carga, sin lastre, (ni tren de transporte), flecha y altura máxima.

H sin cabina

I

Reazioni in servizio

Reazioni fuori servizio

A vuoto, senza zavorra (ne assali di trasporto) con braccio massimo e altezza massima.

H senza cabina

P

Reações em serviço

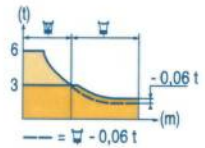
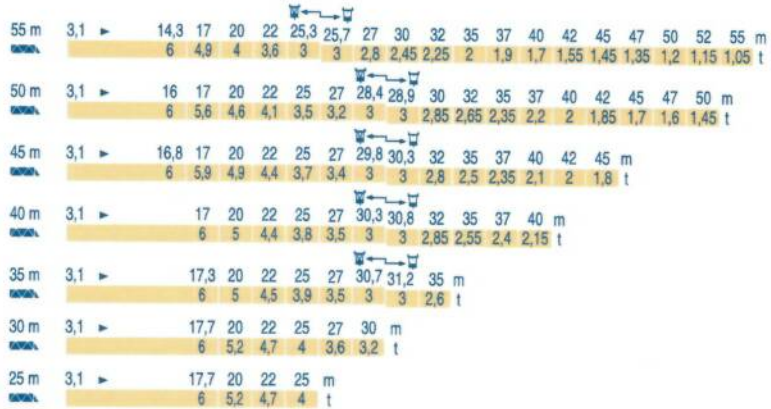
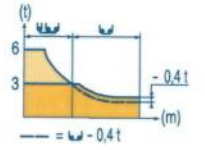
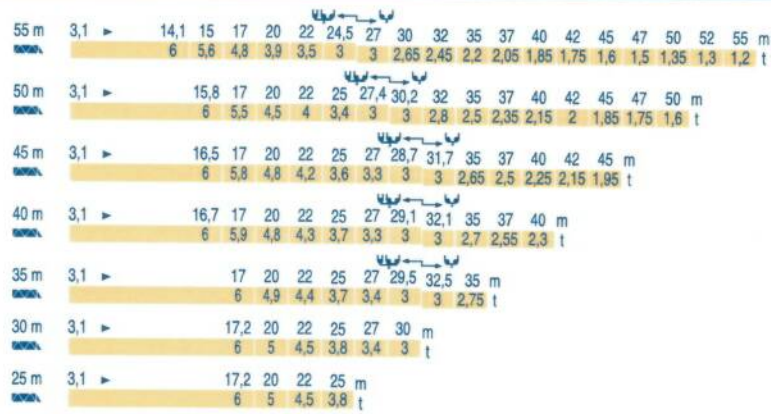
Reações fora de serviço

Sem carga (nem trem de transporte)- sem lastro com lança e altura máximas.

H sem cabine

Courbes de charges
Lastkurven
Load diagrams
Curvas de cargas
Curve di carico
Curva de cargas

MEM 1



Lest de contre-flèche
Gegenauslegerballast
Counter-jib ballast
Lastre de contra flecha
Contrappeso
Lastros da contra lança

MEM 1

		1 100 kg - 3 600 kg
		(kg)
55 m	13,7 m	17 400
50 m	13,7 m	16 300
45 m	13,7 m	15 200
40 m	13,7 m	14 100
35 m	13,7 m	13 000
30 m	13,7 m	11 900
25 m	13,7 m	10 800

Lest de base
Grundballast
Base ballast
Lastre de base
Zavorra di base
Lastros da base

MEM 1

□ 1,2 m	ZC 2030 - ●	H (m)	38,3	30,8	20,3						
			(t)	75	50	50					
□ 1,2 m	ZD 2030 - ●	H (m)	38,3	30,8	20,3						
			(t)	60	35	35					
□ 1,6 m	ZC 4030 - ●	H (m)	39,5	29,5	19,5	9,5					
			(t)	70	65	60	55				
□ 1,6 m	ZD 4030 - ●	H (m)	44,5	39,5	34,5	29,5	24,5	19,5	14,5	9,5	
			(t)	70	70	60	60	45	45	45	45
□ 1,6 m	ZD 4230 - ●	H (m)	48,1	44,7	39,7	34,7	29,7	24,7	19,7	14,7	9,7
			(t)	80	70	60	45	45	45	45	45
□ 1,6 m	S 40 A - ●	H (m)	49,3	44,3	39,3	34,3	29,3	24,3	19,3	14,3	
			(t)	84	60	42	42	42	42	36	36
□ 1,6 m	S 41 A - ●	H (m)	54,3	49,3	44,3	39,3	34,3	29,3	24,3	19,3	14,3
			(t)	114	84	60	42	42	42	42	36

City Topless
MDT 98

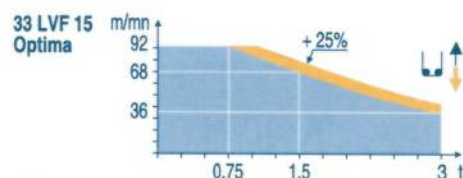
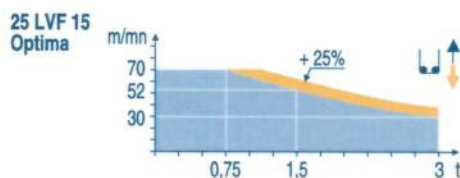


	F	D	GB	E	I	P
A	Distance entre cadres	Abstand zwischen den Rahmen	Distance between collars	Distancia entra marcos	Distanza fra i telai	Distância entre quadros
H1	Hauteur grue	Kranhöhe	Crane height	Altura grúa	Altezza gru	Altura da grua
P	Poids de la grue(en service)	Krangewicht (in Betrieb)	Crane weight (in service)	Peso de la grúa (en servicio)	Peso della gru (in servizio)	Peso da grua (em serviço)
R	Réaction horizontale	Horizontalkräfte	Horizontal reaction	Reaccion horizontal	Reazione orizzontale	Reacção horizontal
	Voir télescopage sur dalles	Siehe Kletterkrane im Gebäude	See climbing crane	Vea grua trepadora	Consultare gru in cavedio	Ver telescopagem sobre lages

Mécanismes
Antriebe
Mechanisms
Mecanismos
Meccanismi
Mecanismos

MEM 1

		↕					↕					ch - PS hp	kW														
↕	25 LVF 15 Optima	m/min	3,2	→	8,6	→	30	→	40	→	52	→	70	1,6	→	4,3	→	15	→	20	→	26	→	35	25	18	260 m
	t	3	3	3	2,25	1,5	0,75	6	6	6	4,5	3	1,5														
↕	33 LVF 15 Optima	m/min	3	→	12	→	36	→	48	→	68	→	92	1,5	→	6	→	18	→	24	→	34	→	46	30	22	260 m
	t	3	3	3	2,25	1,5	0,75	6	6	6	4,5	3	1,5														
↔	7 DVF 4	m/min	0 → 79										6,5	4,8													
↕	RVF 152 Optima +	tr/min U/min rpm	0 → 0,8										2 x 5,5	2 x 4													
↕	ZC 2030 ZC 4030	RT 224	25										2 x 4	2 x 2,9													
↕	ZD 2030 ZD 4030 ZD 4230	RT 324	12,5 - 25										2 x 7	2 x 5,2													
↕	S 40 A R ≥ 10 m	RT 324	12,5 - 25										2 x 7	2 x 5,2													
↕	S 41 A A1 2V R ≥ 10 m	RT 443	15 - 30										4 x 5	4 x 3,7													
		CEI 38	IEC 38		kVA																						
		400 V (+6% -10%) 50 Hz			25 LVF : 40 kVA 33 LVF : 50 kVA					2000 / 14																	



F	D	GB	E	I	P	
Levage	Heben	Hoisting	Elevación	Sollevamento	Elevação	
Distribution	Katzfahren	Trolleying	Distribución	Distribuzione	Distribuição	
Orientation	Schwenken	Stewing	Orientación	Rotazione	Rotação	
Translation	Kranfahren	Travelling	Traslación	Traslazione	Translação	
	Conforme aux directives CEE sur le niveau acoustique	Gemäss EWG-Richtlinien für den Schall-Leistungspegel	In compliance with the EEC instructions on noise level	Conforme con las directivas CEE sobre el nivel acustico	Conforme alle direttive CEE sul livello acustico	Conforme as directivas CEE sobre o nível acústico



Document commercial non contractuel. Pour toute information technique se référer à la notice correspondante

Unverbindliches Vertriebsdokument. Für technische Informationen, siehe die entsprechenden Anweisungen.

This commercial document is not legally binding. For any technical information, please refer to the corresponding instructions.

Documento comercial no contractual. Para cualquier información técnica, ver la noticia correspondiente.

Documento commerciale non vincolante, per tutte le informazioni tecniche fare riferimento al catalogo istruzioni

Documento comercial não contractual. Para qualquer informação técnica complementar consultar as respectivas instruções

Manitowoc
Crane CARE

POTAIN

18, rue de Charbonnières - B.P.173
69132 ECULLY Cedex - France

Tel. : (33) 4 72 16 20 20
Fax. : (33) 4 72 16 20 00
www.manitowoccrane.com www.potain.com



Americas

Tel: +1 920 683 6322
Tel: +1 717 597 8121

Europe - Middle East - Africa

Tel : +(33) 4 72 01 50 00
Tel : +(44) 191 565 6291

Asia - Pacific

Tel: +(65) 6861 7133
Fax: +(65) 6862 4142

www.manitowoccrane.com

City Topless MDT 98

Réf. 2004 42 MBM 1

Copyright.Reproduction interdite © POTAIN 2004

BISCHAG

- Bau- und Industriekrane
- Verkauf-Vermietung-Service
- Hebebühnen
- Scheren-Bühnen
- Teleskop-Arbeitsbühnen
- Verkauf-Vermietung
- Transporte
- Spezialtransporte
- Greiferarbeiten
- Seilwindarbeiten
- LKW mit Ladekran

Grienstrasse 17
4227 Büsserach
Telefon 061 781 55 11
Fax 061 781 55 12
www.bischat.ch



Réalisation Sedoc



SERVICE



VERMIETUNG



VERKAUF



Bau- und Industriekrane
LKW-Kranarbeiten
Spezialtransporte
Hydraulikservice
Arbeitsbühnen
Teleskoplader



Wahlenstrasse 175
4242 Laufen



061 781 55 11



info@bischag.ch

