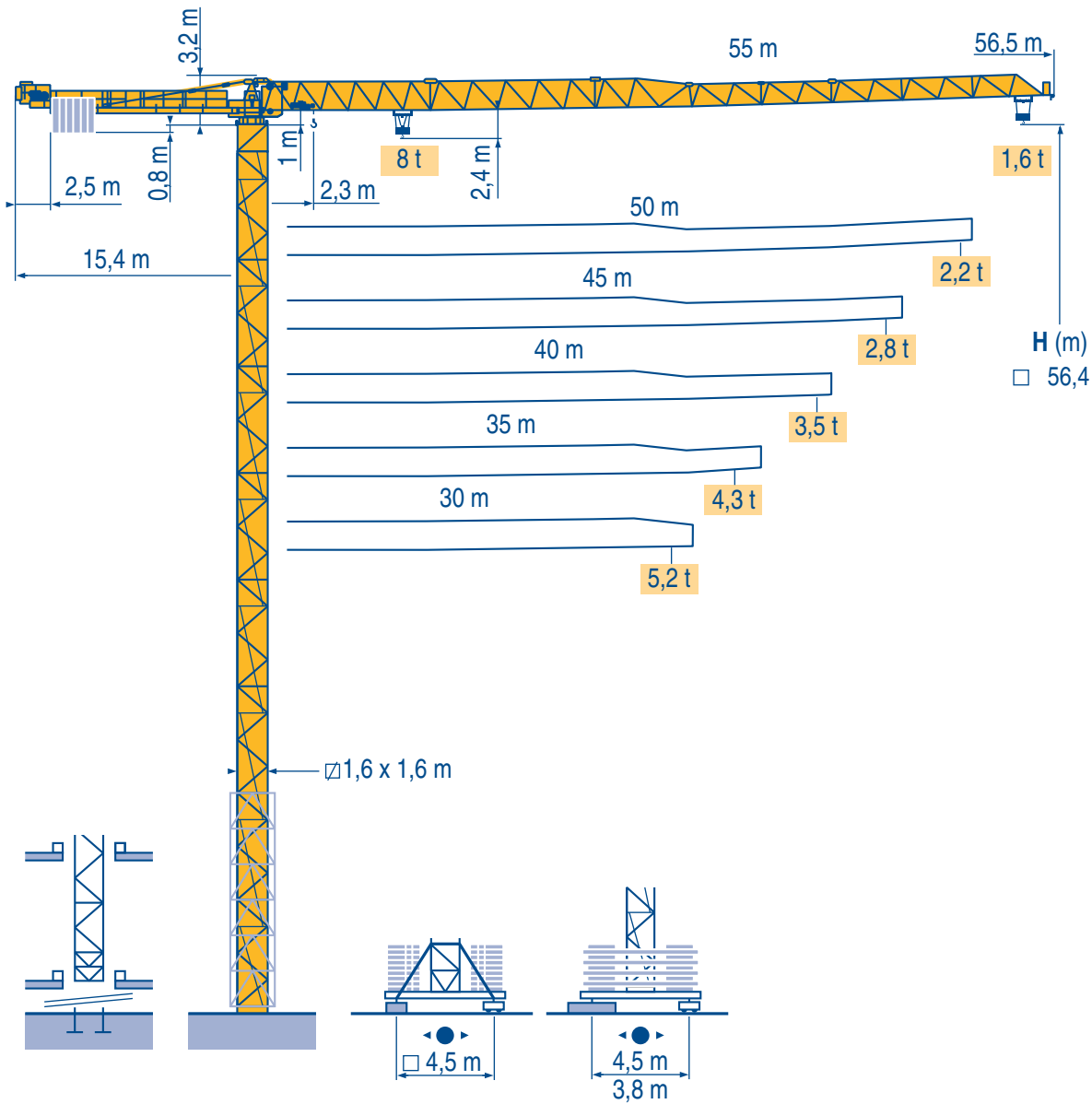


Topless MDT 132 G8



Igo
HD
HDM



HDT



GTMR



CITY CRANE



TOPKIT MD
MAXI MD



MAXI TOPKIT



Topless MDT



MR



LQ1 1

CE FEM 1.001-A3

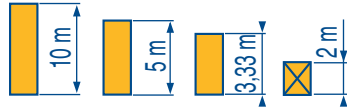


POTAIN  [®]

Mat / Réactions (F)
 Maste / Eckdrücke (D)
 Télescopable 1,6 m (F)
 Teleskopierbar 1,6 m (D)

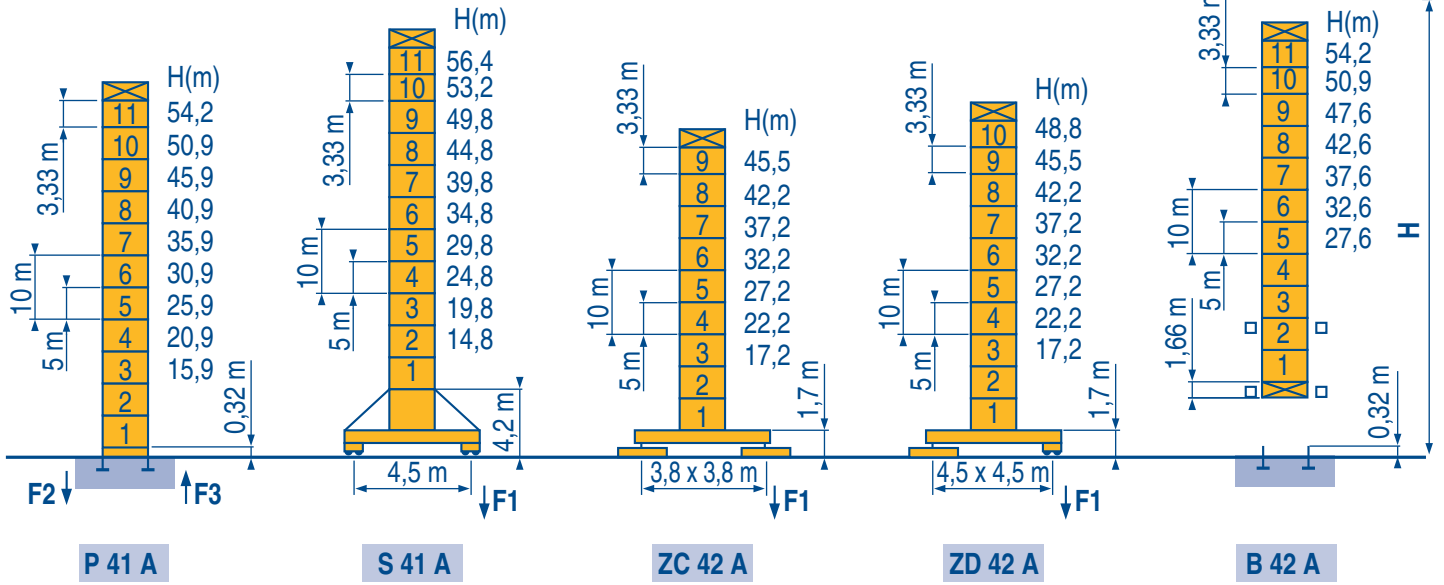
Masts / Reactions (GB)
 Mástil / Reacciones (E)
 Telescopic 1,6 m (GB)
 Telescopico 1,6 m (E)

Torre / Reazioni (I)
 Tramo/Reacções (P)
 Telescopico 1,6 m (I)
 Telescopagem 1,6 m (P)



1,6 m
 MDT 132 G8

30 m → 55 m



F2	● 103 t	■ 171 t
F3	● 69 t	■ 141 t
Person icon	46 t	

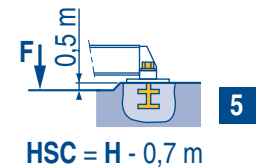
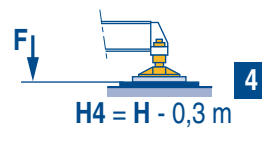
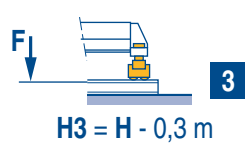
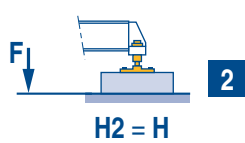
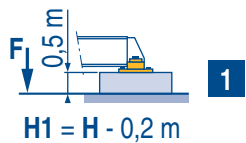
F1	● 83 t	■ 113 t
Person icon	53 t	

F1	● 71 t	■ 89 t
Person icon	47 t	

F1	● 65 t	■ 85 t
Person icon	49 t	



ZC 42 A - ZD 42 A



LQI 1

	Voir télescopage sur dalles (F)		Siehe Kletterkrane im Gebäude (D)		See climbing crane (GB)		Veja grua trepadora (E)		Consultare gru in cavedio (I)		Ver telescopagem sobre lages (P)
●	Réactions en service	●	Reaktionskräfte in Betrieb	●	Reactions in service	●	Reacciones en servicio	●	Reazioni in servizio	●	Reacções em serviço
■	Réactions hors service	■	Reaktionskräfte außer Betrieb	■	Reactions out of service	■	Reacciones fuera de servicio	■	Reazioni fuori servizio	■	Reacções fora de serviço
	A vide sans lest (ni train de transport) avec flèche et hauteur maximum.		Ohne Last, Ballast (und Transportachse), mit Maximalausleger und Maximalhöhe.		Without load, ballast (or transport axles), with maximum jib and maximum height.		Sin carga, sin lastre, (ni tren de transporte), flecha y altura máxima.		A vuoto, senza zavorra (ne assali di trasporto) con braccio massimo e altezza massima.		Sem carga (nem trem de transporte)-sem lastro com lança e altura máximas.

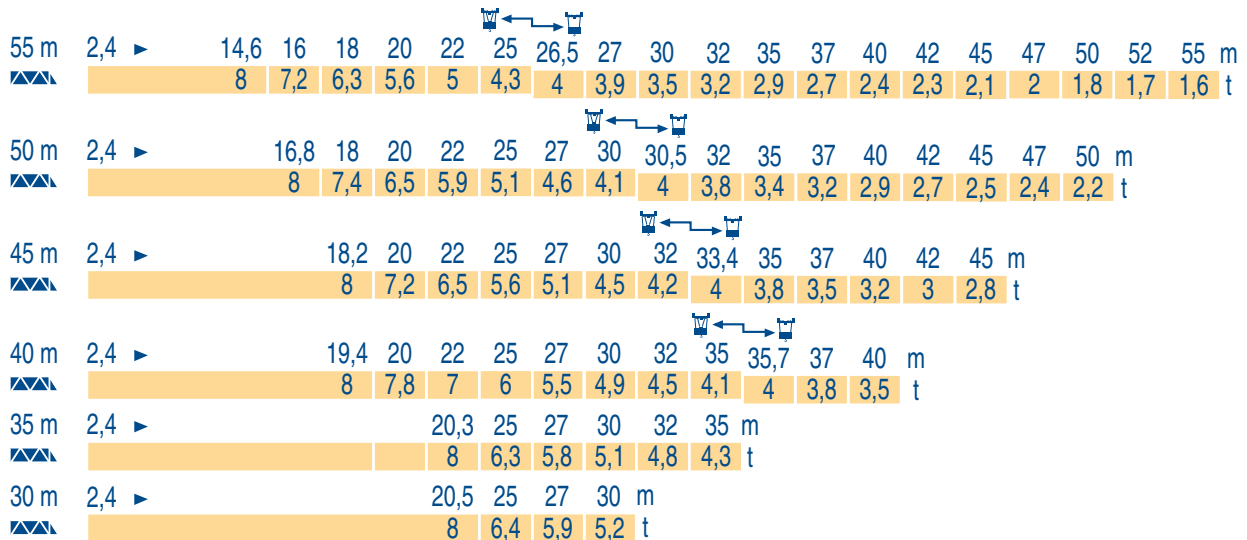
Courbes de charges
Lastkurven



Load diagrams
Curvas de cargas



Curve di carico
Curva de cargas



LQI 1

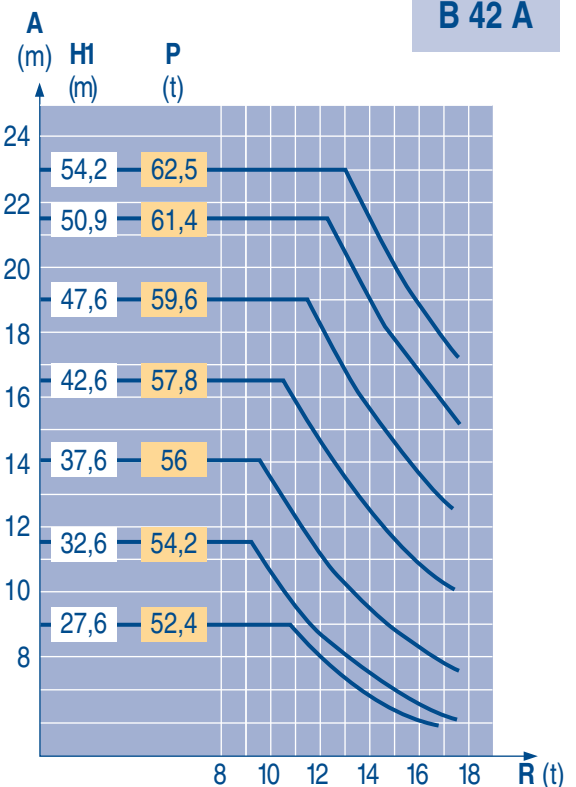
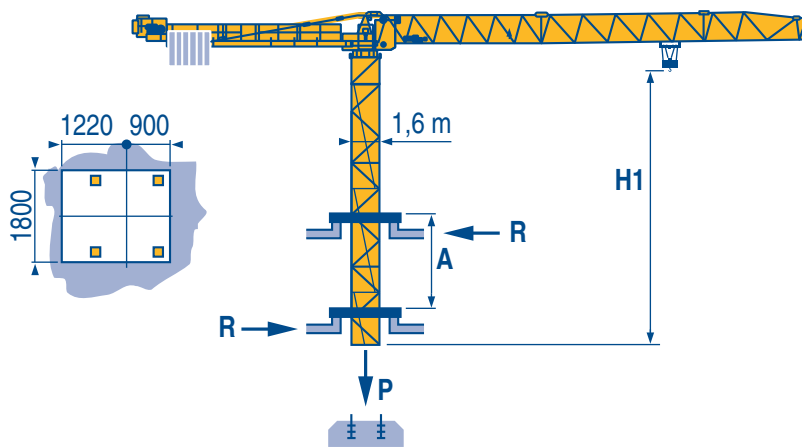
Télescopage sur dalles
Kletterkrane im Gebäude



Climbing crane
Telescopage gruas trepadoras



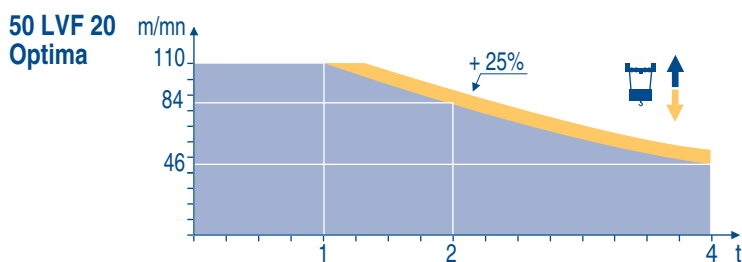
Gru in cavedio
Telescopagem sobre lages



LQI 1

A	Distance entre cadres	F	Abstand zwischen den Rahmen	D	Distance between collars	GB	Distancia entre marcos	E	Distanza fra i telai	I	Distância entre quadros	P
H1	Hauteur grue		Kranhöhe		Crane height		Altura grúa		Altezza gru		Altura da grua	
P	Poids de la grue (en service)		Krangewicht (in Betrieb)		Crane weight (in service)		Peso de la grúa (en servicio)		Peso della gru (in servizio)		Peso da grua (em serviço)	
R	Réaction horizontale		Horizontalkräfte		Horizontal reaction		Reaccion horizontal		Reazione orizzontale		Reacção horizontal	

														ch - PS hp	kW				
	50 LVF 20 Optima	m/min	3,6 → 15 → 46 → 60 → 84 → 110							1,8 → 7,4 → 23 → 30 → 42 → 55					50	37	557 m > 557		
		t	4	4	4	3	2	1	8	8	8	6	4	2					
	28 S 2,0 410	m/min	3,1/31			6,2/62				1,6/16			3,1/31		38	28	410 m > 410		
		t	4			2				8			4						
	DV - 5.5	m/min	11 - 33 - 66														7,5	5,5	
	R - 6	tr/min U/min rpm	0 → 0,81														2 x 4	2 x 3	
ZD 42 A ZC 42 A 	RT 324	m/min	12,5 - 25														2 x 7	2 x 5,2	
S 41 A R 10 m	RT 443 A1 2V	m/min	15 - 30														4 x 6,8	4 x 5	
CEI 38		IEC 38		kVA															
400V (+6%-10%) 50 Hz				28 S 2,0 : 50 kVA 50 LVF 20 : 74 kVA										84/534 - 87/405					



LQI 4

	Levage	F	Heben	D	Hoisting	GB	Elevación	E	Sollevamento	I	Elevação	P
	Distribution		Katzfahren		Trolleying		Distribución		Ditribuzione		Distribuição	
	Orientation		Schwenken		Slewing		Orientación		Rotazione		Rotação	
	Translation		Kranfahren		Travelling		Traslación		Traslazione		Translação	
	Conforme aux directives CEE 84/534 et 87/405 sur le niveau acoustique		Gemäss EWG-Richtlinien 84/534 und 87/405 für den Schall-Leistungspegel		In compliance with the EEC 84/534 and 87/405 Instructions on noise level		Conforme con las directivas CEE 84/534 y 87/405 sobre el nivel acustico		Conforme alle direttive CEE 84/534 e 87/405 sul livello acustico		Conforme as directivas CEE 84/534 e 87/405 sobre o nível acústico	
	Nous consulter		Auf Anfrage		Consult us		Consultarnos		Consultateci		Consultar-nos	



Document commercial non contractuel. Pour toute information technique se référer à la notice correspondante

Unverbindliches Vertriebsdokument. Für technische Informationen, siehe die entsprechenden Anweisungen.

This commercial document is not legally binding. For any technical information, please refer to the corresponding instructions.

Documento comercial no contractual. Para cualquier información técnica, ver la noticia correspondiente.

Documento commerciale non vincolante, per tutte le informazioni tecniche fare riferimento al catalogo istruzioni

Documento comercial não contractual. Para qualquer informação técnica complementar consultar as respectivas instruções

POTAIN

18.Rue de Charbonnières, B.P. 173
F-69132 ECULLY Cedex
Tél. (33)04.72.18.20.20
Fax (33)04.72.18.20.00
http://www.potain.com
E-mail : mkt@potain.fr



Manitowoc Crane Group

Deutschland
POTAIN GmbH Tel : 06.1.05.70.40
Italia
POTAIN S.p.A. Tel : 0.331.49.33.11
Portugal
POTAIN Portugal Tel : 22.968.08.89
Singapore
MANITOWOC POTAIN PTE LTD Tel : 227.15.50

Copyright.Reproduction interdite © POTAIN 2000

Topless MDT 132 G8
Réf. 1999.01 LQI 6



SERVICE



VERMIETUNG



VERKAUF



Bau- und Industriekrane
LKW-Kranarbeiten
Spezialtransporte
Hydraulikservice
Arbeitsbühnen
Teleskoplader



Wahlenstrasse 175
4242 Laufen



061 781 55 11



info@bischag.ch

