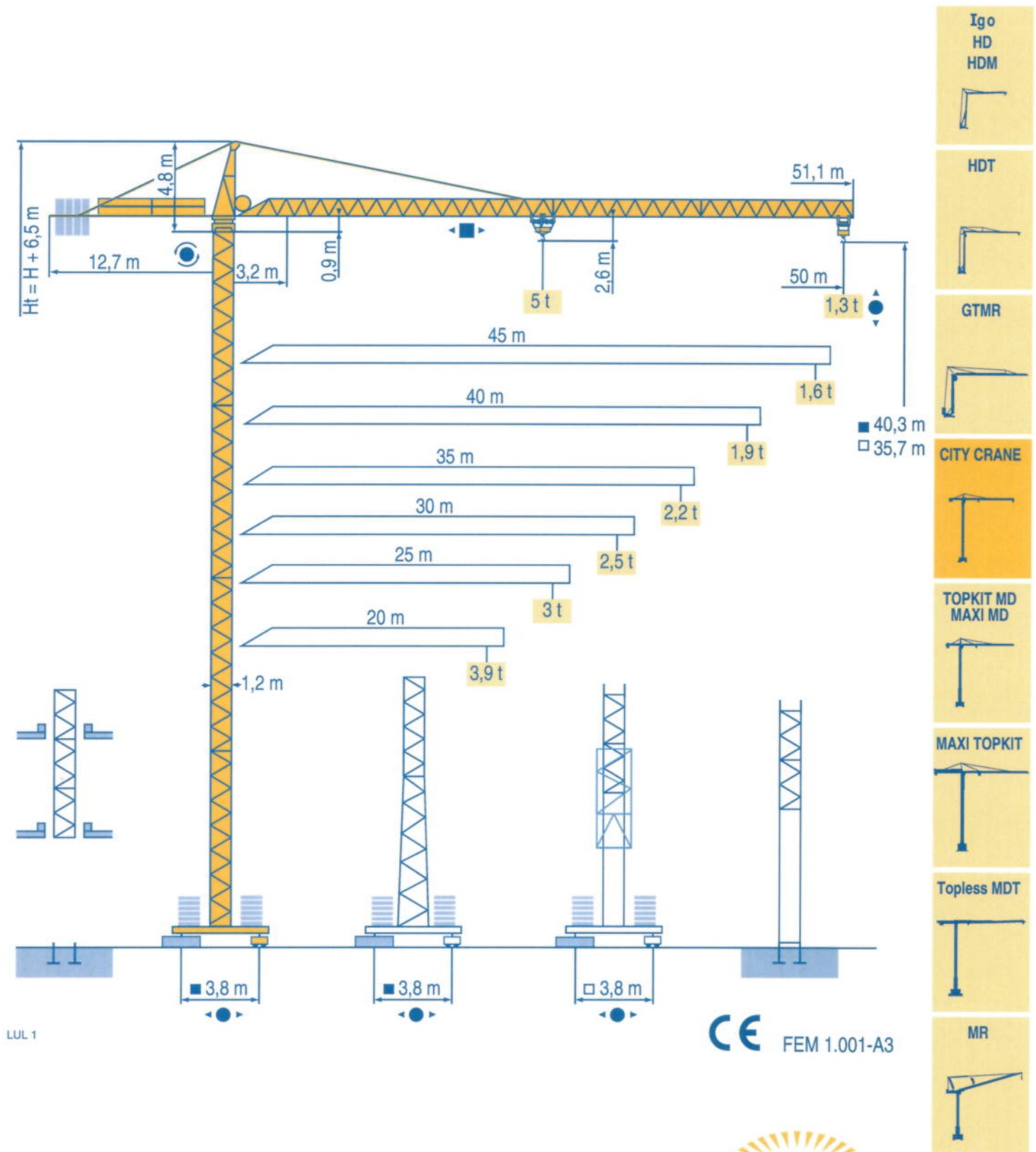


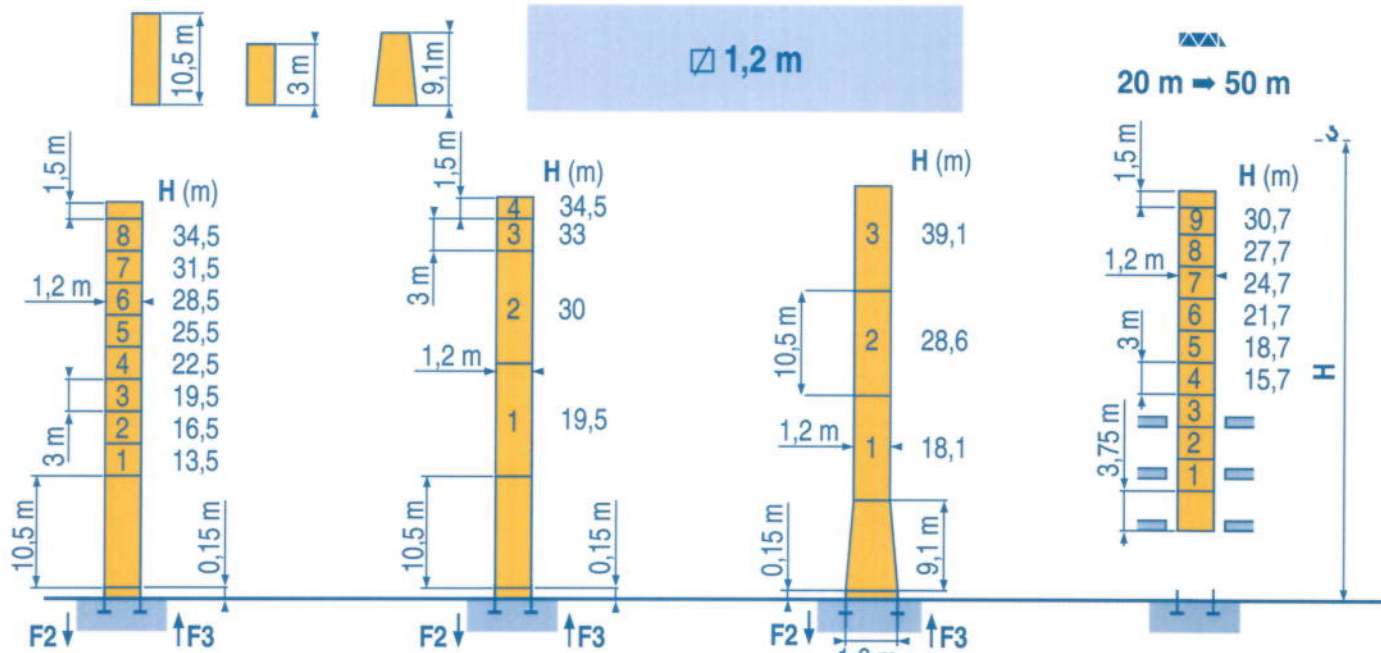
CITY CRANE MC 85 B



LUL 1



Ø 1,2 m



P 12 C

| | | |
|----|--------|--------|
| F2 | ● 76 t | ■ 91 t |
| F3 | ● 56 t | ■ 73 t |
| ⚙️ | 22 t | |

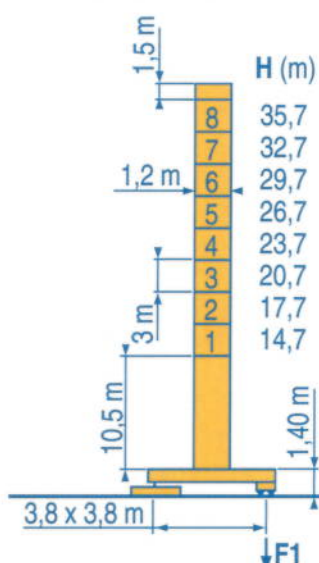
P 12 C

| | | |
|----|--------|--------|
| F2 | ● 76 t | ■ 91 t |
| F3 | ● 56 t | ■ 73 t |
| ⚙️ | 22 t | |

P 16 A

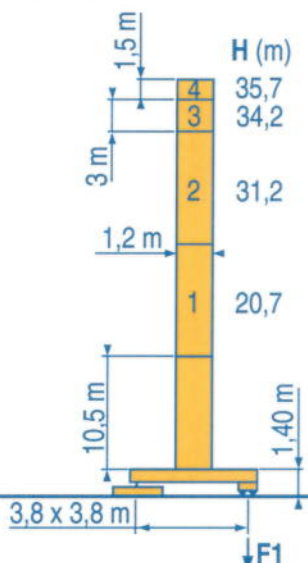
| | | |
|----|--------|--------|
| F2 | ● 65 t | ■ 85 t |
| F3 | ● 45 t | ■ 67 t |
| ⚙️ | 22,5 t | |

B 125 A / P 12 B



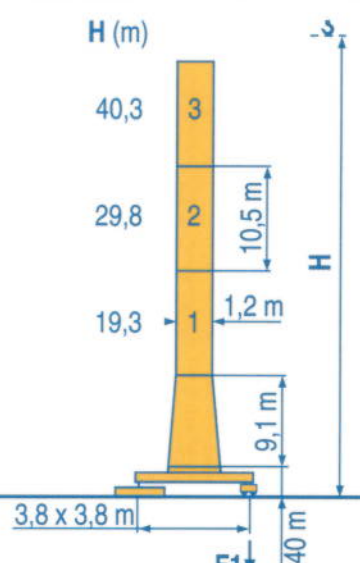
ZF 12 A / ZFC 12 A

| | | |
|----|--------|--------|
| F1 | ● 44 t | ■ 53 t |
| ⚙️ | 27,5 t | |



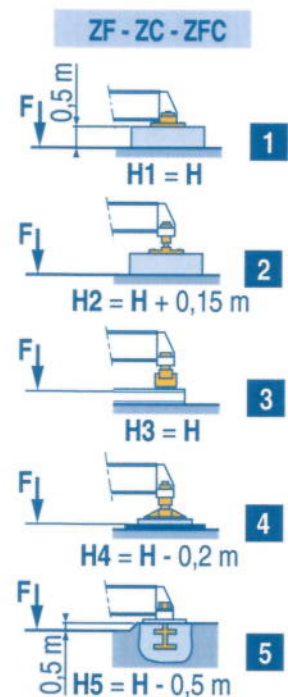
ZF 12 A / ZFC 12 A

| | | |
|----|--------|--------|
| F1 | ● 44 t | ■ 53 t |
| ⚙️ | 27,5 t | |



ZC 16 A / ZFC 16 A

| | | |
|----|--------|--------|
| F1 | ● 51 t | ■ 65 t |
| ⚙️ | 28 t | |



LUL 2



Voir télescopage sur dalles
● Réactions en service
■ Réactions hors service
⚙️ A vide sans lest (ni train de transport) avec flèche et hauteur maximum.



Siehe Kletterkrane im Gebäude
● Reaktionskräfte in Betrieb
■ Reaktionskräfte außer Betrieb
⚙️ Ohne Last, Ballast (und Transportachse), mit Maximalausleger und Maximalhöhe.



See climbing crane
● Reactions in service
■ Reactions out of service
⚙️ Without load, ballast (or transport axles), with maximum jib and maximum height.



Vea grua trepadora
● Reacciones en servicio
■ Reacciones fuera de servicio
⚙️ Sin carga, sin lastre, (ni tren de transporte), flecha y altura máxima.



Consultare gru in cavedio
● Reazioni in servizio
■ Reazioni fuori servizio
⚙️ A vuoto, senza zavorra (ne assali di trasporto) con braccio massimo e altezza massima.



Ver telescopagem sobre lages
● Reações em serviço
■ Reações fora de serviço
⚙️ Sem carga (nem trem de transporte)-sem lastro com lança e altura máximas.



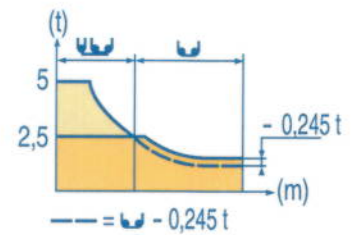
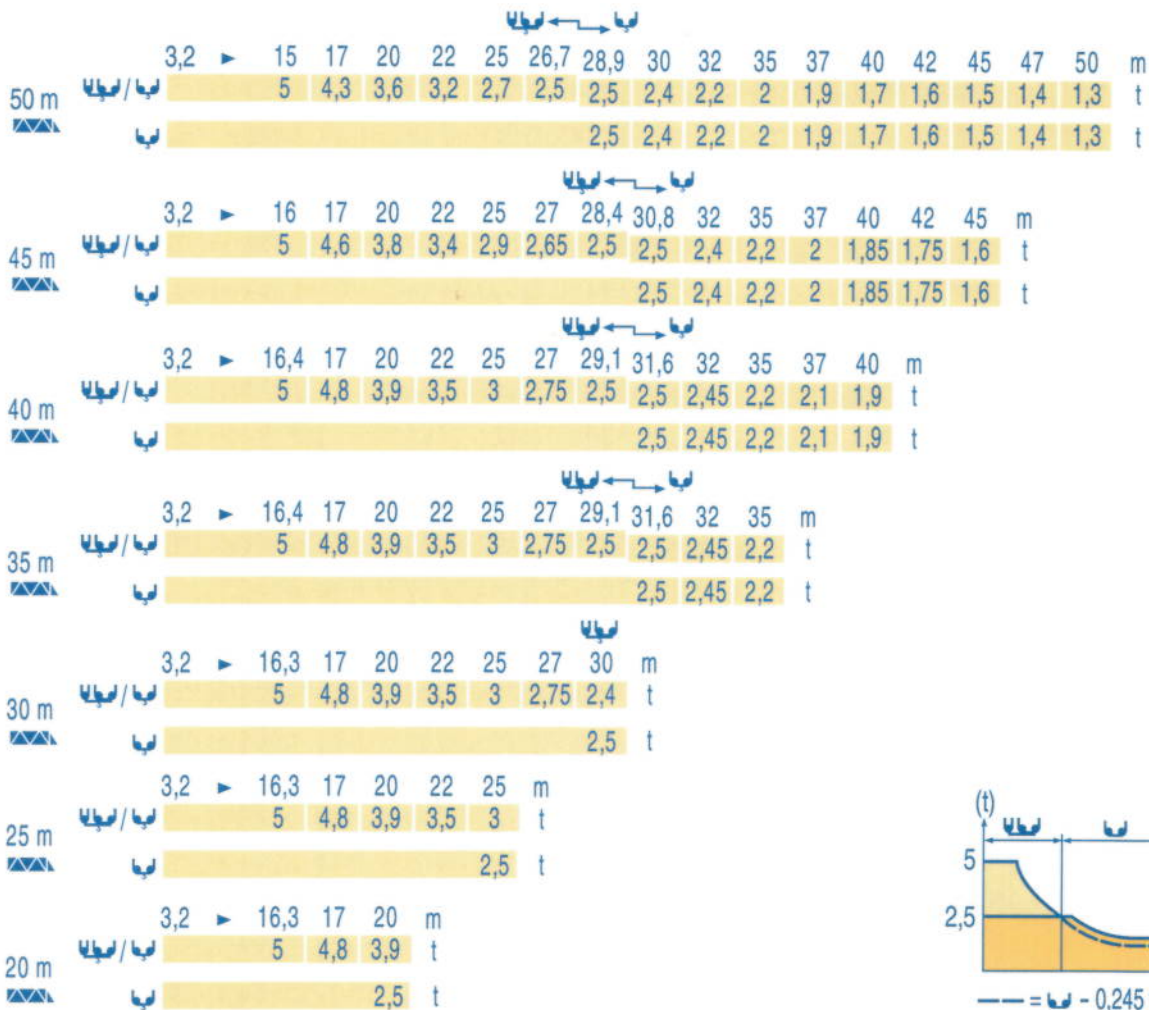
Courbes de charges
Lastkurven



Load diagrams
Curvas de cargas



Curve di carico
Curva de cargas



LUL 1

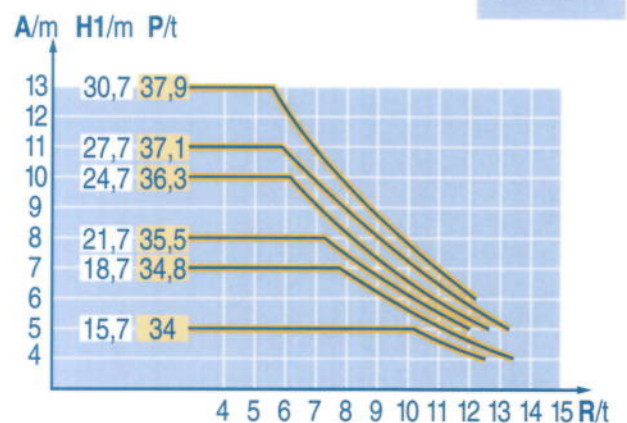
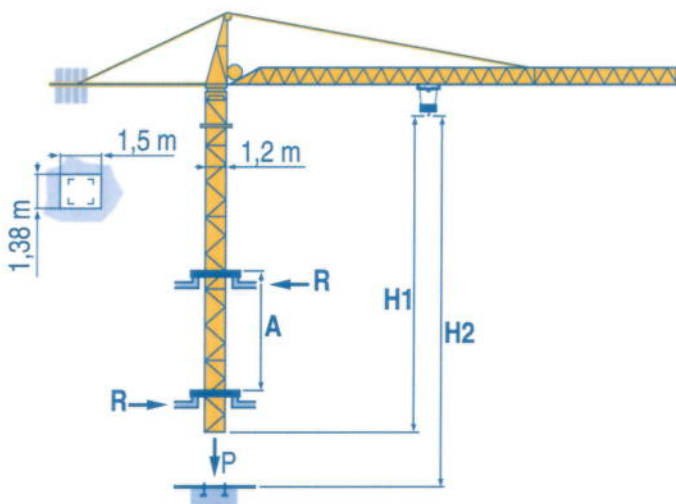
Télescopage sur dalles
Kletterkrane im Gebäude



Climbing crane
Telescopage gruas trepadoras

















Gru in cavedio
Telescopagem sobre lages





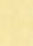


LUL 1

| A | Distance entre cadres | F | Abstand zwischen den Rahmen | D | Distance between collars | GB | Distancia entre marcos | E | Distanza fra i telai | I | Distância entre quadros | P |
|----|-------------------------------|---|-----------------------------|---|---------------------------|----|-------------------------------|---|------------------------------|---|---------------------------|---|
| H1 | Hauteur grue | | Kranhöhe | | Crane height | | Altura grúa | | Altezza gru | | Altura da grua | |
| P | Poids de la grue (en service) | | Krangewicht (in Betrieb) | | Crane weight (in service) | | Peso de la grúa (en servicio) | | Peso della gru (in servizio) | | Peso da grua (em serviço) | |
| R | Réaction horizontale | | Horizontalkräfte | | Horizontal reaction | | Reaccion horizontal | | Reazione orizzontale | | Reacção horizontal | |

| | | | U | | | UU | | | ch - PS hp | kW |  |
|---|---|------------------------|---|---|---|---|---|---|---------------|---------|---|
| | | |  |  |  |  |  |  | | | |
|  | 15 PC 13-6 | m/min | 7,2 | 21,5 | 43 | 3,6 | 11 | 21,5 | 15 | 11 | 185 m |
| | | t | 2,5 | 2,5 | 1,3 | 5 | 5 | 2,6 | | | |
| | 25 PC 13-8 | m/min | 8,2 | 33 | 66 | 4,1 | 16,5 | 33 | 25 | 18 | 323 m |
| | | t | 2,5 | 2,5 | 1,3 | 5 | 5 | 2,6 | | | |
| 20 LVF 13 | m/min | 5 → 28,4 → 52,6 → 69 | 2,5 → 14,4 → 26,3 → 34,5 | 20 | 15 | 323 m | | | | | |
| | t | 2,5 2,5 1,3 0,65 | 5 5 2,6 1,3 | 20 | 15 | 323 m | | | | | |
|  | 4 D3 V3 | m/min | 15 - 30 - 58 | | | | | | 4 | 3 | |
|  | RCV 60 | tr/min U/min rpm | 0 → 0,8 | | | | | | 8 | 6 | |
|  | ZF TVD 324 | m/min | 26 | | | | | | 2 x 4 | 2 x 2,9 | |
|  | ZC - ZFC RT 224 | m/min | 25 | | | | | | 2 x 4 | 2 x 2,9 | |
| CEI 38 |  | IEC 38 | kVA | | | |  | | | | |
| 400 V (+6% -10%) 50 Hz | | | 15 PC : 30 kVA 25 PC : 35 kVA 20 LVF : 30 kVA | | | | 84/534 - 87/405 | | | | |

LUL 4

| | | | | | | | | | | | | |
|--|---|---|--|---|--|----|---|---|--|---|---|---|
|  | Levage | F | Heben | D | Hoisting | GB | Elevación | E | Sollevamento | I | Elevação | P |
|  | Distribution | | Katzfahren | | Trolleying | | Distribución | | Distribuzione | | Distribuição | |
|  | Orientation | | Schwenken | | Slewing | | Orientación | | Rotazione | | Rotação | |
|  | Translation | | Kranfahren | | Travelling | | Traslación | | Traslazione | | Translação | |
|  | Conforme aux directives CEE 84/534 et 87/405 sur le niveau acoustique | | Gemäss EWG-Richtlinien 84/534 und 87/405 für den Schall-Leistungspegel | | In compliance with the EEC 84/534 and 87/405 Instructions on noise level | | Conforme con las directivas CEE 84/534 y 87/405 sobre el nivel acustico | | Conforme alle direttive CEE 84/534 e 87/405 sul livello acustico | | Conforme as directivas CEE 84/534 e 87/405 sobre o nível acústico | |

Document commercial non contractuel. Pour toute

Unverbindliches Vertriebsdokument. Für

This commercial document is not legally binding. For any technical information, please refer to the corresponding instructions.

Documento comercial no contractual. Para cualquier información técnica, ver la noticia correspondiente.

Documento commerciale non vincolante, per tutte le informazioni tecniche fare riferimento al catalogo istruzioni

Documento comercial não contractual. Para qualquer informação técnica complementar consultar as respectivas instruções

- Bau- und Industriekrane
- Verkauf-Vermietung-Service
- Hebeebühnen
- Scheren-Bühnen
- Teleskop-Arbeitsbühnen
- Verkauf-Vermietung
- Transporte
- Spezialtransporte
- Greiferarbeiten
- Selbstwindarbeiten
- LKW mit Ladekran

Grienstrasse 17
4227 Büsserach
Telefon 061 781 55 11
Fax 061 781 55 12
www.bischag.ch

BISCHAG



POTAIN

de Charbonnières, B.P. 173
32 ECULLY Cedex
33)04.72.18.20.20
33)04.72.18.20.00
www.potain.com
E-Mail : mkt@potain.fr

MANITOWOC
woc Crane Group

Deutschland
POTAIN GmbH
Italia
POTAIN S.p.A.
Portugal
POTAIN Portugal
Singapore
MANITOWOC POTAIN PTE LTD

Tel : 06.1.05.70.40
Tel : 0.331.49.33.11
Tel : 22.968.08.89
Tel : 227.15.50

Copyright.Reproduction interdite © POTAIN 2000

CITY CRANE MC 85 B
Réf. 2000.36 LUL 7



SERVICE



VERMIETUNG



VERKAUF



Bau- und Industriekrane
LKW-Kranarbeiten
Spezialtransporte
Hydraulikservice
Arbeitsbühnen
Teleskoplader



Wahlenstrasse 175
4242 Laufen



061 781 55 11



info@bischag.ch

