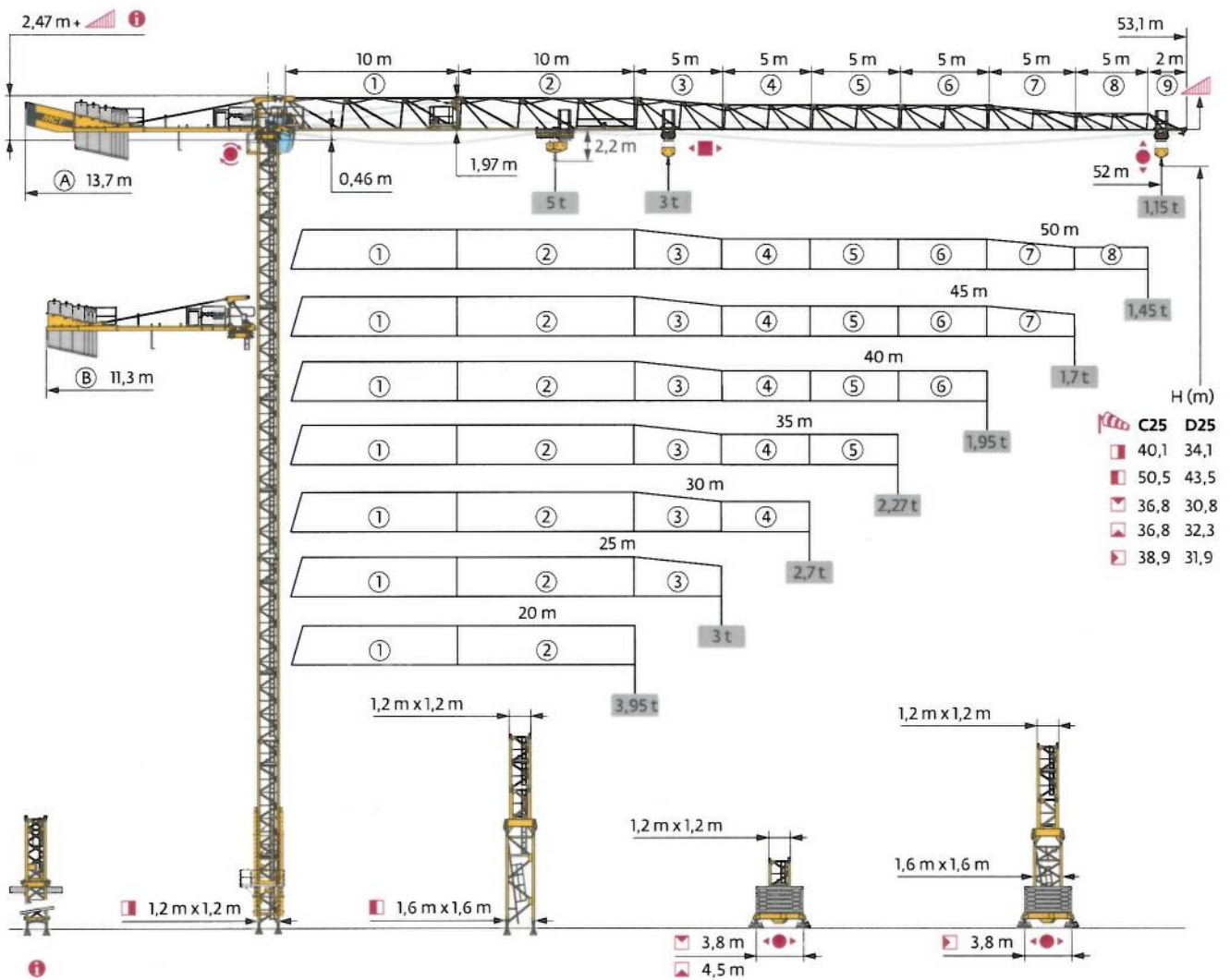


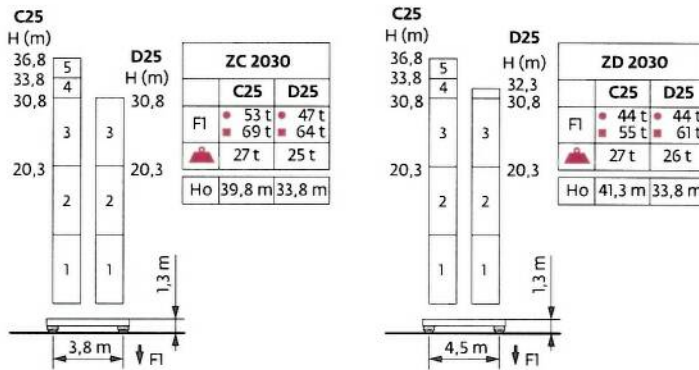
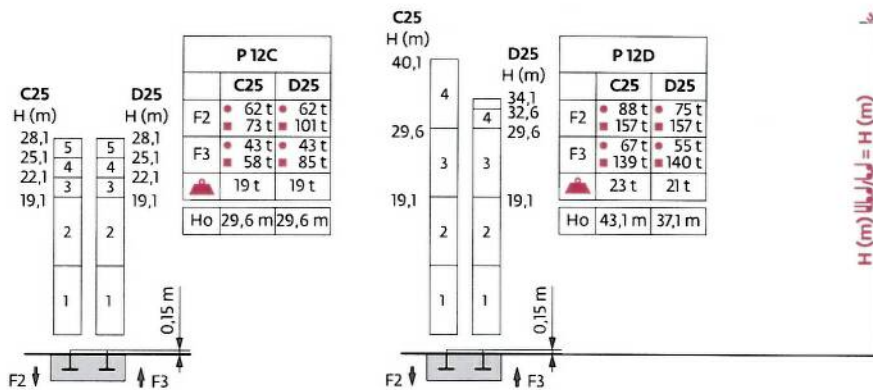
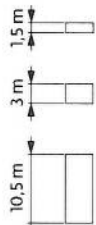
Potain MCT 88



Mât - Réactions / Mast - Reaktionskräfte / Mast - Reactions / Mástil - Reacciones / Torre - Reazioni
 Tramo - Reações / Реакция опор мачты

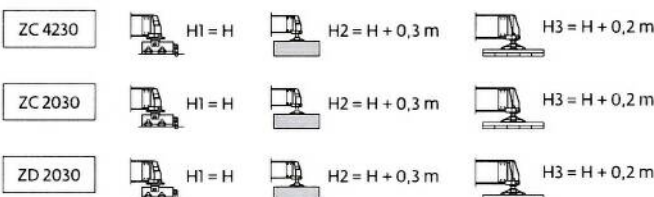
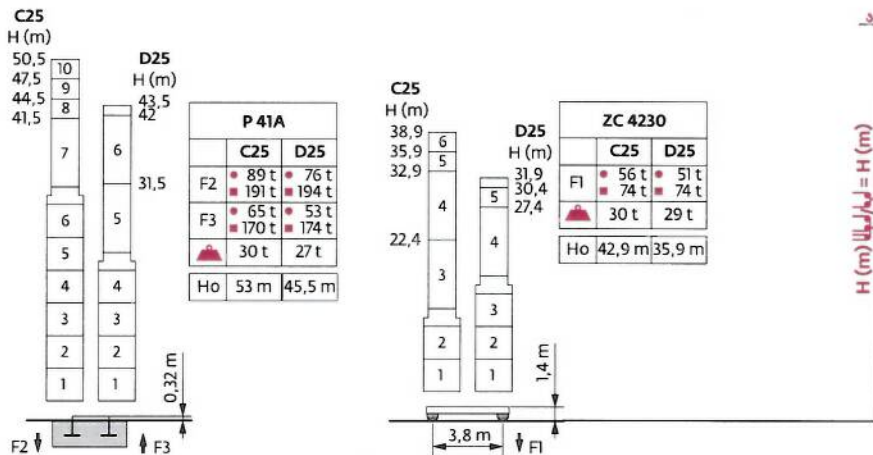
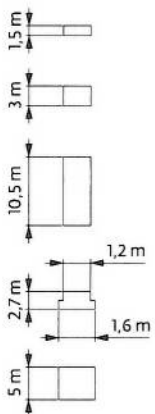
1,2 m

20 m → 52 m



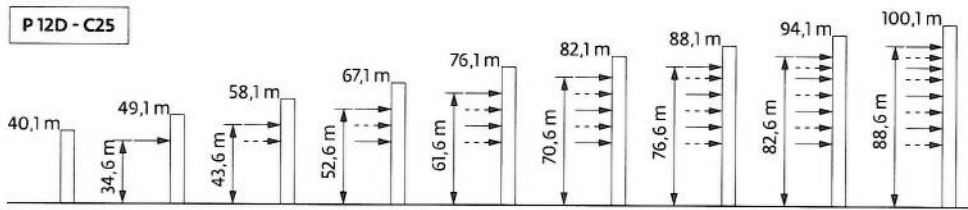
1,6 m/1,2 m

20 m → 52 m







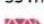
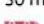
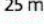

Ancrages / Verankerungen / Anchorages / Anclajes / Ancoraggi
 Ancoragem / Анкера

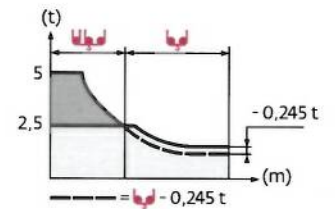
D25 






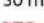
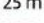
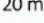


Courbes de charges / Lastkurven / Load curves / Curvas de cargas / Curve di carico
 Curvas de carga / Кривые нагрузок














52 m	2,7	▶	13,7	15	17	20	22	24,3	26,4	27	30	32	35	37	40	42	45	47	50	52	m
			5	4,5	3,9	3,2	2,85	2,5	2,5	2,45	2,15	2	1,8	1,7	1,55	1,45	1,3	1,25	1,15	1,1	t
50 m	2,7	▶	15,9	17	20	22	25	27	28,3	30,7	32	35	37	40	42	45	47	50			m
			5	4,6	3,8	3,4	2,9	2,65	2,5	2,5	2,4	2,15	2	1,85	1,75	1,6	1,5	1,4			t
45 m	2,7	▶	16,3	17	20	22	25	27	29,1	31,6	32	35	37	40	42	45					m
			5	4,8	3,9	3,5	3	2,75	2,5	2,5	2,45	2,2	2,1	1,9	1,8	1,65					t
40 m	2,7	▶	16,4	17	20	22	25	27	29,1	31,6	32	35	37	40							m
			5	4,8	3,9	3,5	3	2,75	2,5	2,5	2,45	2,2	2,1	1,9							t
35 m	2,7	▶	16,4	17	20	22	25	27	29,1	31,6	32	35									m
			5	4,8	3,9	3,5	3	2,75	2,5	2,5	2,45	2,22									t
30 m	2,7	▶	16,3	17	20	22	25	27	29	30											m
			5	4,8	3,9	3,5	3	2,75	2,5	2,5											t
25 m	2,7	▶	16,3	17	20	22	25														m
			5	4,8	3,9	3,5	3														t
20 m	2,7	▶	16,3	17	20																m
			5	4,8	3,95																t





52 m	2,05	▶					22,9	25	27	30	32	35	37	40	42	45	47	50	52		m
							3	2,7	2,5	2,2	2,05	1,85	1,75	1,6	1,5	1,35	1,3	1,2	1,15		t
50 m	2,05	▶					26,6	27	30	32	35	37	40	42	45	47	50				m
							3	2,95	2,6	2,45	2,2	2,05	1,9	1,8	1,65	1,55	1,45				t
45 m	2,05	▶					27,4	30	32	35	37	40	42	45							m
							3	2,7	2,5	2,25	2,15	1,95	1,85	1,7							t
40 m	2,05	▶					27,4	30	32	35	37	40									m
							3	2,7	2,5	2,25	2,15	1,95									t
35 m	2,05	▶					27,4	30	32	35											m
							3	2,7	2,5	2,27											t
30 m	2,05	▶					27,4	30													m
							3	2,7													t
25 m	2,05	▶						25													m
								3													t
20 m	2,05	▶				20															m
								3													t

Lest de base / Grundballast / Base ballast / Lastre de base / Zavorra di base
 Lastro da base / Базовый Балласт

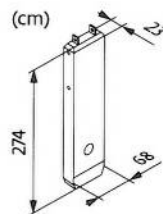
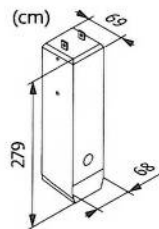
 1,2 m	 ZC 2030 C25 D25	H (m)	36,8	33,8	30,8	20,3			
		 (t)	75	55	50	35			
		 (t)	-	-	70	35			
	 ZD 2030 C25 D25	H (m)	36,8	33,8	32,3	30,8	20,3		
		 (t)	55	40	35	35	20		
		 (t)	-	-	65	55	20		
 1,2 m/1,6 m	 ZC 4230 C25 D25	H (m)	38,9	35,9	32,9	31,9	30,4	27,4	22,4
		 (t)	80	65	50	50	45	35	30
		 (t)	-	-	-	80	70	50	30

Lest de contre-flèche / Gegenauslegerballast / Counter-jib ballast / Lastre de contra-flecha / Zavorra di controbraccio
 Lastro da contra lança / Противовес стрелы

	3000 kg	1000 kg	 (kg)
52 m	3	4	13000
50 m	3	4	13000
45 m	3	3	12000
40 m	3	2	11000
35 m	3	1	10000
30 m	3	0	9000
25 m	2	2	8000
20 m	2	1	7000

CBP - 3000 kg

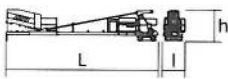
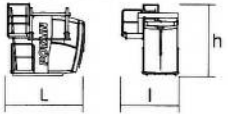
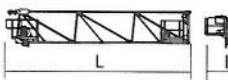

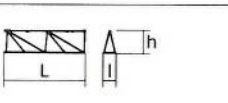
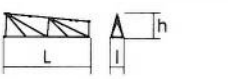
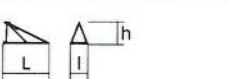
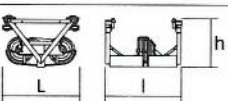
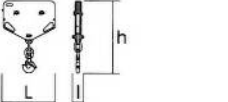
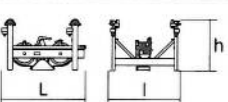
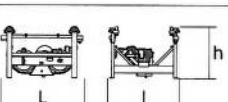
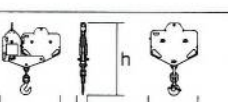
CBQ - 1000 kg

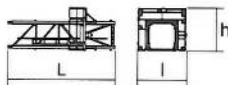
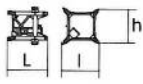

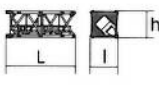
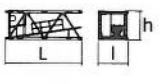
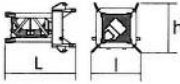
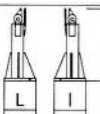

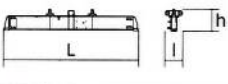


Encombremet et poids / Abmessungen und Gewicht / Dimensions and weight / Dimensiones y peso / Ingombro e peso
dimensões e pesos / габаритные размеры и вес







Partie tournante / Drehender Kranteil / Slewing crane part / Parte giratoria
Parte rotante / Parte rotativa / Поворотная часть : 52 m - 25 LVF





Partie tournante / Drehender Kranteil / Slewing crane part Parte giratoria / Parte rotante / Parte rotativa Поворотная часть		L (m)	I (m)	h (m)	kg (+/- 5%)
Contre-flèche / Gegenausleger Counter-jib / Contra-flecha Controbraccio / Contra-lança Контр-стрела		11,9 11,9	1,76 1,76	2,47 2,47	4380 4250
Cabine / Kabine Cab / Cabina Cabina / Cabina Кабина		2,9	2,38	3,03	1100
Elément de flèche / Auslegerelement Jib section / Elemento de flecha Elemento di braccio / Elemento de lança Секция стрелы		10,75	1,81	2,2	2820
Elément de flèche / Auslegerelement Jib section / Elemento de flecha Elemento di braccio / Elemento de lança Секция стрелы		10,21	0,8	1,95	1140
Elément de flèche / Auslegerelement Jib section / Elemento de flecha Elemento di braccio / Elemento de lança Секция стрелы		5,15 5,14 5,13 5,08	0,8 0,8 0,8 0,8	1,9 1,5 1,48 1	325 290 285 175
Elément de flèche / Auslegerelement Jib section / Elemento de flecha Elemento di braccio / Elemento de lança Секция стрелы		5,17 5,11	0,8 0,8	1,91 1,47	400 195
Elément de flèche / Auslegerelement Jib section / Elemento de flecha Elemento di braccio / Elemento de lança Секция стрелы		2,05	0,8	1	60
Chariot / Laufkatze Trolley / Carrello Carro / Carro-distribuidor Тележка		0,89	0,95	0,7	120
Moufle / Hubflasche Pulley block / Aparejo Bozzello / Cadernal Полиспаст		0,72	0,16	0,99	110
Chariot / Laufkatze Trolley / Carrello Carro / Carro-distribuidor Тележка		1,1	1	0,72	130
Chariot / Laufkatze Trolley / Carrello Carro / Carro-distribuidor Тележка		1,13 1,14	1 1	0,72 0,72	115 165
Moufle / Hubflasche Pulley block / Aparejo Bozzello / Cadernal Полиспаст		1,09 0,74	0,21 0,2	1,38 1,13	235 135

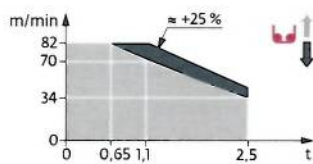
Equipement de télescopage / Teleskopierausrüstung / Telescoping equipment Equipo de telescopaje / Equipaggiamento di telescopaggio / Equipamento de telescopagem Оборудование для телескопирования		L (m)	l (m)	h (m)	kg (+/- 5%)	
Cage de télescopage / Teleskopwagen Telescopic cage / Jaula de telescopaje Gabbia di telescopaggio / Gaiola de telescopagem для телескопирования крана		□1,2 m	6,26	2,8	2,41	1325
Mât de télescopage / Teleskopiermast Telescoping mast / Tramo de telescopaje Elemento di telescopaggio / Tramo de Telescopagem Мачта для телескопирования		□1,2 m	1,7	1,55	1,6	605
Mâtture / Mastwerk / Masts Mástil / Torre / Coluna Мачты						
S 24E-2 SR 24E-2 SR 26E-2		□1,2 m	10,7 10,7 10,75	1,28 1,26 1,27	1,28 1,26 1,27	2190 2200 2875
S 24A-2		□1,2 m	3,2	1,3	1,28	715
K 439A K 437A		□1,6 m	5,21 5,21	1,67 1,67	1,62 1,62	2230 1850
Mât raccord / Verbindungsmast Connecting mast / Tramo unión Elemento raccordo / Tramo raccord Переходная мачта		□1,6/1,2 m	2,94	2,06	2,1	2100
Bases / Kranbasen / Crane bases Bases / Basi / Bases Фундамент под кран						
Pied de scellement / Verankerungsfuss Fixing angles / Pie de empotramiento Montante da annegare / Angulos fixadores анкера		P 12C P 12D P 41A	0,49 0,49 0,37	0,49 0,49 0,37	1,12 1,12 1,14	110 165 135
Bras de croix / Fundamentkruzträger Cross girder / Brazo en cruz Braccio croce / Braço da cruz Поперечная балка		ZC 2030 ZC 4230 ZD 2030	5,63 5,64 6,62	0,47 0,47 0,47	1,45 1,33 1,45	1735 1895 1930
Bras de croix / Fundamentkruzträger Cross girder / Brazo en cruz Braccio croce / Braço da cruz Поперечная балка		ZC 2030 ZC 4230 ZD 2030	5,63 5,64 6,62	0,82 0,82 0,82	1,16 1,05 1,16	1500 1590 1690

Mécanismes / Triebwerke / Mechanisms / Mecanismos / Meccanismi
 Mecanismos / Механизмы

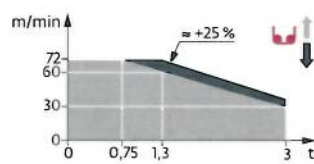
400 V - 50 Hz											ch - PS hp	kW	
	25 LVF 13 Optima	m/min	34	56	70	82	17	28	35	41	25	18	329 m
		t	2,5	1,45	1,1	0,65	5	2,9	2,2	1,3			
	25 LVF 15 Optima	m/min	30	48	60	72					25	18	228 m
		t	3	1,7	1,3	0,75							
	4 DVF 3	m/min	0 → 63								5	3,7	
	RVF 151 Optima+	tr/min U/min rpm	0 → 0,8								5,5	4	
ZC 2030 ZD 2030	RT 224	m/min	25								2 x 4	2 x 2,9	
ZC 4230	RT 324	m/min	12,5 - 25								2 x 7	2 x 5,2	

 IEC 60204-32	 kVA
400 V (+10% -10%) 50 Hz	25 LVF : 35 kVA

25 LVF 13 Optima



25 LVF 15 Optima



	FR	DE	EN	ES	IT	PT	RU
	Profil de vent suivant EN 14439 C25-D25	Windbedingungen gemäss EN 14439 C25-D25	Wind conditions according to EN 14439 C25-D25	Conformidad de los condiciones de viento EN 14439 C25-D25	Condizioni del vento secondo EN 14439 C25-D25	Perfil de vento conforme EN 14439 C25-D25	Ветровой режим в соответствии с EN 14439 C25-D25
	Appel de flèche	Auslegerüberhöhung	jib elevation	Elevación de la flecha	Inclinazione braccio	Desvio da lança	подъем стрелы
	Réactions en service Réactions hors service	Reaktionskräfte in Betrieb Reaktionskräfte außer Betrieb	Reactions in service Reactions out of service	Reacciones en servicio Reacciones fuera de servicio	Reazioni in servizio Reazioni fuori servizio	Reacções em serviço Reacções fora de serviço	Реакция при работе Реакция в покое
	Hauteur sans cabine	Höhe ohne Kabine	Height without cab	Altura sin cabina	Altezza senza cabina	Altura sem cabina	Высота без кабины
	Poids à vide sans lest avec flèche et hauteur maximum	Gewicht ohne Last, ohne Ballast, mit Ausleger und max. Höhe	Weight without load, without ballast, with jib and max height	Peso en vacío sin lastre, con flecha y altura máxima	Peso a vuoto, senza zavorra, con braccio e altezza massimi.	Peso em vazio sem lastro com lança e altura máxima	Вес пустого, без балласта, со стрелой, максимальной высоты.
	Poids total du lest	Ballast-Gesamtgewicht	Total ballast weight	Peso total del lastre	Peso totale della zavorra	Peso total do lastro	Общий вес балласта
	Camion 13,4 m	Lkw 13,4 m	Lorry 13,4 m	Camión 13,4 m	Camion 13,4 m	Camião 13,4 m	Ррузовой автомобиль 13,4 м
	Conteneur High Cube 40' et/ou Flat Rack 20'	Container High Cube 40' und/oder Flat Rack 20'	Container High Cube 40' and/or Flat Rack 20'	Contenedor High Cube 40' y/o Flat Rack 20'	Container High Cube 40' e/o Flat Rack 20'	Contentor High Cube 40' e/ou Flat Rack 20'	40-футовый контейнер повышенной вместимости High Cube, и/или 20-футовая открытая платформа Flat Rack
	Cadre d'ancrage serré Cadre d'ancrage desserré	Fester Verankerungsrahmen Loser Verankerungsrahmen	Tightened anchorage frame Loosened anchorage frame	Marco de anclaje de apriete Marco de anclaje de desapriete	Quadro di ancoraggio stretto Quadro di ancoraggio allentato	Quadro de amarração apertado Quadro de amarração solto	Прикрепленная анкерная рама Отсоединенная анкерная рама
	Levage	Heben	Hoisting	Elevación	Sollevamento	Elevação	Подъем
	Distribution	Katzfahren	Trolleying	Distribución	Ditribuzione	Distribuição	Перемещение по стреле
	Orientation	Schwenken	Slewing	Orientación	Rotazione	Rotação	Поворот
	Translation	Kranfahren	Traveling	Traslación	Traslazione	Translação	Перемещение крана
	Puissance nominale	Nennleistung	Rated power	Potencia nominal	Potenza nominale	Potência nominal	Номинальная мощность
	Nous consulter	Auf Anfrage	Consult us	Consultarnos	Consultateci	Consultar-nos	Проконсультируйтесь у нас
	Document commercial non contractuel. Pour toute information technique se référer à la notice correspondante	Unverbindliches Vertriebsdokument. Für technische Informationen, siehe die entsprechenden Anweisungen.	This commercial document is not legally binding. For any technical information, please refer to the corresponding instructions	Documento comercial no contractual. Para cualquier información técnica, ver la noticia correspondiente.	Documento commerciale non vincolante, per tutte le informazioni tecniche fare riferimento al catalogo istruzioni.	Documento comercial não contratual. Para qualquer informação técnica complementar consultar as respectivas instruções.	Этот коммерческий документ не является юридически обязательным. Для получения технической информации, см. соответствующие инструкции

- Bau- und Industriekrane
- Verkauf-Vermietung-Service
- Hebebühnen
- Scheren-Bühnen
- Teleskop-Arbeitsbühnen
- Verkauf-Vermietung
- Transporte
- Spezialtransporte
- Greiferarbeiten
- Seilwindarbeiten
- LKW mit Ladekran

BISCHAG

Grienstrasse 17
4227 Büsserach
Telefon 061 781 55 11
Fax 061 781 55 12
www.bischoag.ch



Manitowoc - Americas
Manitowoc, Wisconsin, USA
 Tel: +1 920 684 6621
 Fax: +1 920 683 6277

Shady Grove, Pennsylvania, USA
 Tel: +1 717 597 8121
 Fax: +1 717 597 4062

Manitowoc - Europe, Middle East & Africa
Ecully, France
 Tel: +33 (0)4 72 18 20 20
 Fax: +33 (0)4 72 18 20 00

Manitowoc - Asia & Pacific
Shanghai, China
 Tel: +86 21 6457 0066
 Fax: +86 21 6457 4955



SERVICE



VERMIETUNG



VERKAUF



Bau- und Industriekrane
LKW-Kranarbeiten
Spezialtransporte
Hydraulikservice
Arbeitsbühnen
Teleskoplader



Wahlenstrasse 175
4242 Laufen



061 781 55 11



info@bischag.ch

