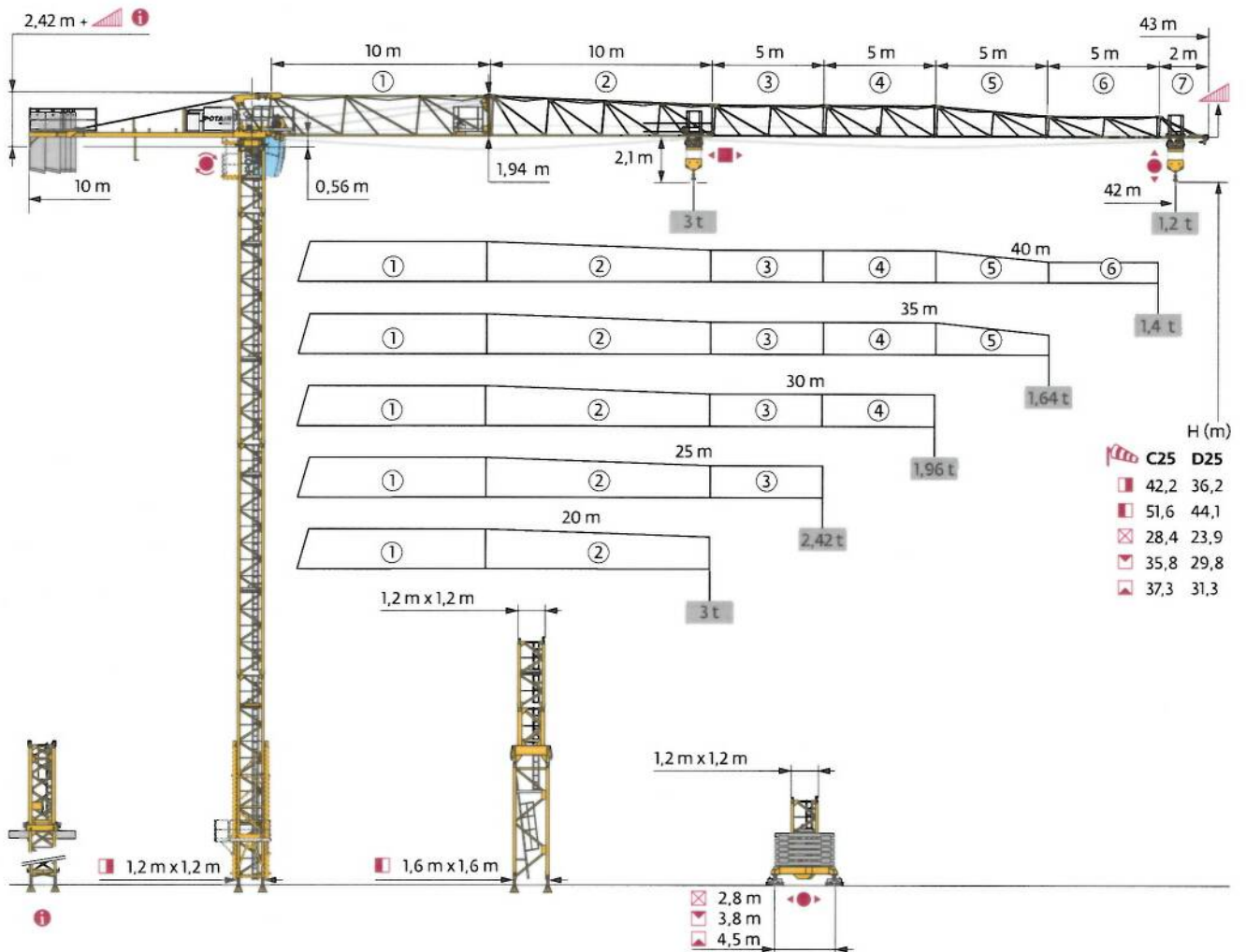
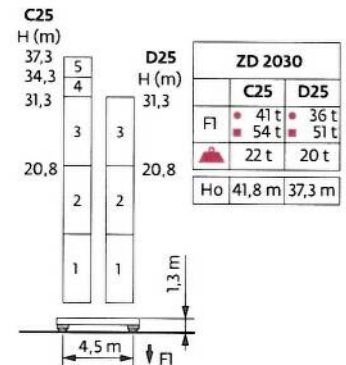
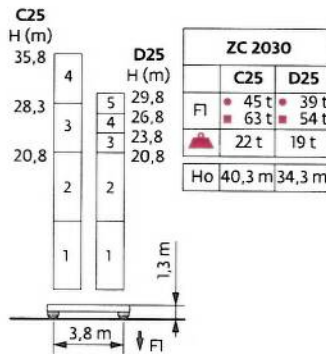
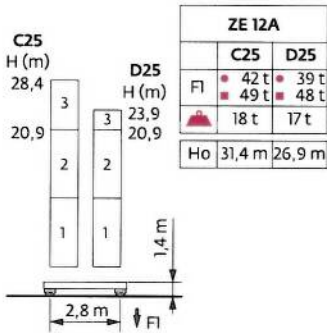
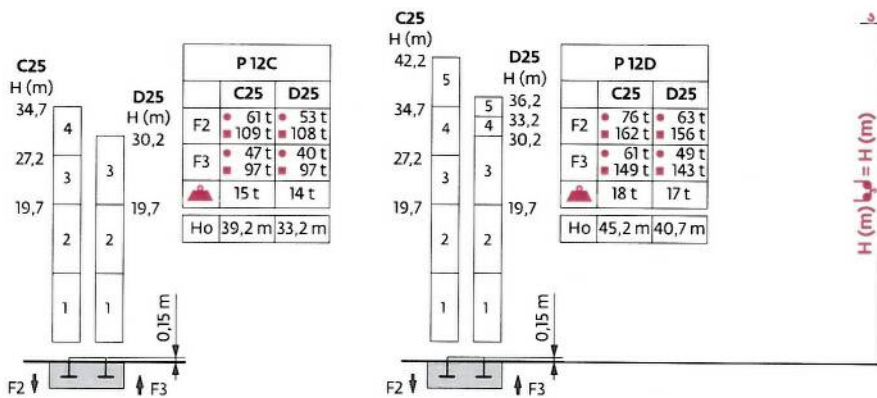
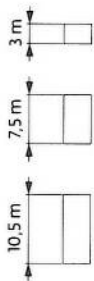


Potain MCT 58

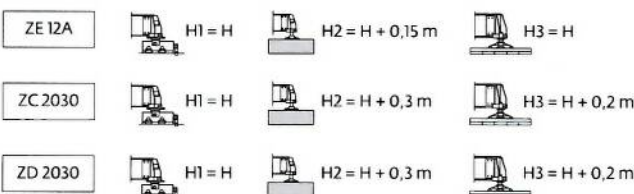
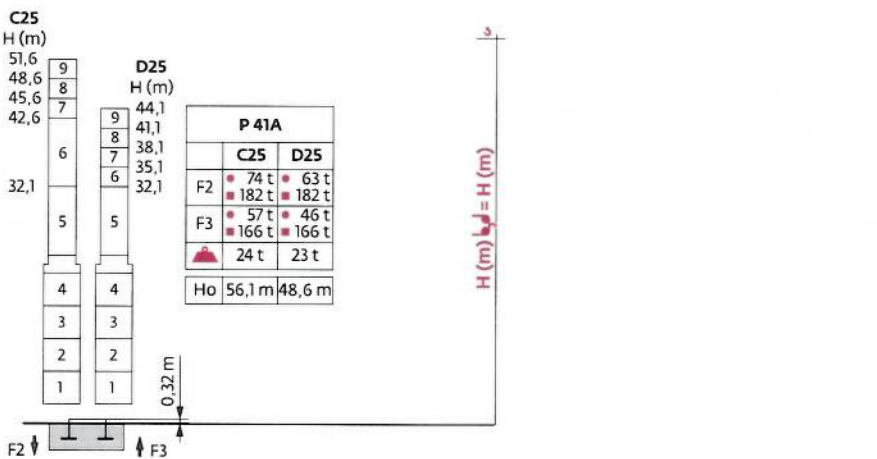
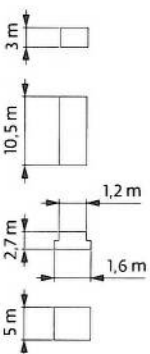


Mât - Réactions / Mast - Reaktionskräfte / Mast - Reactions / Mástil - Reacciones / Torre - Reazioni
 Tramo - Reaçções / Реакция опор мачты

1,2 m
 20 m → 42 m

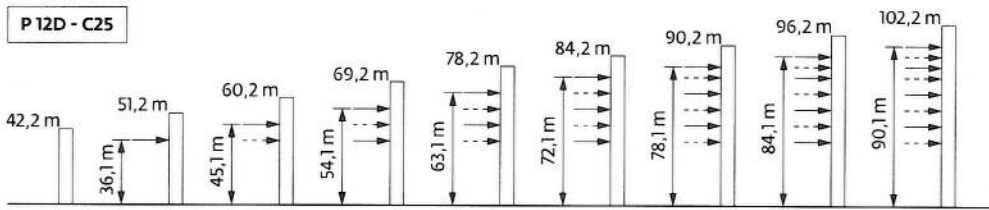


1,6 m/1,2 m
 20 m → 42 m















Anchages / Verankerungen / Anchorages / Anclajes / Ancoraggi
 Ансорагет / Анкера







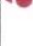

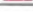
D25 





Courbes de charges / Lastkurven / Load curves / Curvas de cargas / Curve di carico
 Curvas de carga / Кривые нагрузок

42 m		1,95 ▶	19,2	20	22	22,5	25	27	30	32	35	37	40	42	m
			3	2,85	2,55	-	2,2	2,05	1,8	1,65	1,5	1,4	1,25	1,2	t
							2,5	2,2	2,05	1,8	1,65	1,5	1,4	1,25	t
40 m		1,95 ▶	20,7	22	24,3	25	27	30	32	35	37	40		m	
			3	2,8	-	2,4	2,2	1,95	1,8	1,65	1,55	1,4		t	
							2,5	2,4	2,2	1,95	1,8	1,65	1,55	1,4	t
35 m		1,95 ▶	20,7	22	24,3	25	27	30	32	35				m	
			3	2,8	-	2,4	2,2	1,95	1,8	1,64				t	
							2,5	2,4	2,2	1,95	1,8	1,64		t	
30 m		1,95 ▶	20,7	22	24,3	25	27	30						m	
			3	2,8	-	2,45	2,2	1,96						t	
							2,5	2,45	2,2	1,96				t	
25 m		1,95 ▶	20,7	22	24,3	25								m	
			3	2,8	-	2,42								t	
							2,5	2,42						t	
20 m		1,95 ▶	20											m	
			3											t	
			2,5											t	

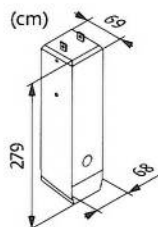
Lest de base / Grundballast / Base ballast / Lastre de base / Zavorra di base
 Lastro da base / Базовый Балласт

 1,2 m	 ZE 12A	H (m)	28,4	23,9	20,9			
		 (t)	60	50	50			
		 (t)	-	60	50			
	 ZC 2030	H (m)	35,8	29,8	28,3	26,8	23,8	20,8
		 (t)	75	40	35	30	30	30
		 (t)	-	65	60	50	40	30
	 ZD 2030	H (m)	37,3	34,3	31,3	20,8		
		 (t)	65	50	40	25		
		 (t)	-	-	60	25		

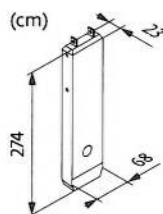
Lest de contre-flèche / Gegenauslegerballast / Counter-jib ballast / Lastre de contra-flecha / Zavorra di controbraccio
 Lastro da contra lança / Противовес стрелы

	3000 kg	1000 kg	 (kg)
42 m	2	3	9000
40 m	2	3	9000
35 m	2	2	8000
30 m	2	1	7000
25 m	1	3	6000
20 m	1	2	5000



CBP - 3000 kg



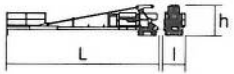
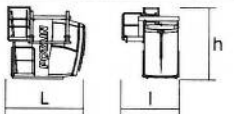
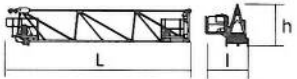

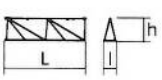

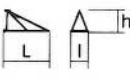
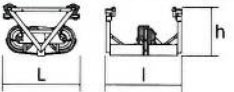



CBQ - 1000 kg

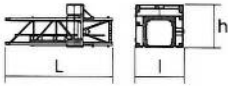
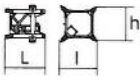
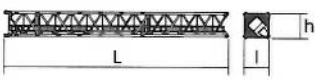
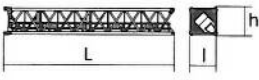
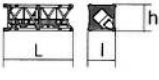
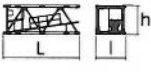
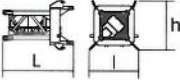
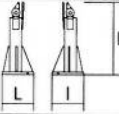
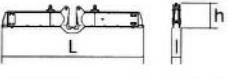

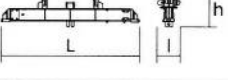




Encombrement et poids / Abmessungen und Gewicht / Dimensions and weight / Dimensiones y peso / Ingombro e peso
dimensões e pesos / габаритные размеры и вес




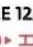
Partie tournante / Drehender Kranteil / Slewing crane part / Parte giratoria
Parte rotante / Parte rotativa / Поворотная часть :  42 m -  25 LVF





Partie tournante / Drehender Kranteil / Slewing crane part Parte giratoria / Parte rotante / Parte rotativa Поворотная часть		L (m)	l (m)	h (m)	kg (+/- 5%)
Contre-flèche / Gegenausleger Counter-jib / Contra-flecha Controbraccio / Contra-lança Контр-стрела		10,81	1,68	2,42	2870
Cabine / Kabine Cab / Cabina Cabina / Cabina Кабина	 Ultra View	2,9	2,38	3,03	1100
Elément de flèche / Auslegerelement Jib section / Elemento de flecha Elemento di braccio / Elemento de lança Секция стрелы	 ① 25 LVF 2 DVF	10,73	1,8	2,2	2375
Elément de flèche / Auslegerelement Jib section / Elemento de flecha Elemento di braccio / Elemento de lança Секция стрелы	 ②	10,17	0,8	1,91	760
Elément de flèche / Auslegerelement Jib section / Elemento de flecha Elemento di braccio / Elemento de lança Секция стрелы	 ③ ④ ⑥	5,14 5,13 5,08	0,8 0,8 0,8	1,5 1,48 1	290 285 175
Elément de flèche / Auslegerelement Jib section / Elemento de flecha Elemento di braccio / Elemento de lança Секция стрелы	 ⑤	5,11	0,8	1,47	195
Elément de flèche / Auslegerelement Jib section / Elemento de flecha Elemento di braccio / Elemento de lança Секция стрелы	 ⑦	2,05	0,8	1	60
Chariot / Laufkatze Trolley / Carrello Carro / Carro-distribuidor Тележка	  2,5 t/3 t	0,89	0,95	0,7	120
Moufle / Hubflasche Pulley block / Aparejo Bozzello / Cadernal Полиспаht	  2,5 t/3 t	0,72	0,16	0,99	110

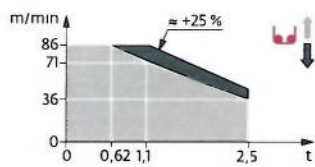
Equipement de télescage / Teleskopierausrüstung / Telescoping equipment Equipo de telescopaje / Equipaggiamento di telescopaggio / Equipamento de telescopagem Оборудование для телескопирования		L (m)	l (m)	h (m)	kg (+/- 5%)	
Cage de télescage / Teleskopwagen Telescopic cage / Jaula de telescopaje Gabbia di telescopaggio / Gaiola de telescopagem для телескопирования крана		□1,2 m	6,26	2,8	2,41	1325
Mât de télescage / Teleskopiermast Telescoping mast / Tramo de telescopaje Elemento di telescopaggio / Tramo de Telescopagem Мачта для телескопирования		□1,2 m	1,7	1,55	1,6	605
Mâtture / Mastwerk / Masts Mástil / Torre / Coluna Мачты						
SR 24E-2 SR 26E-2 S 23B-2		□1,2 m	10,7 10,75 10,7	1,26 1,27 1,3	1,26 1,27 1,28	2200 2875 1975
S 23F-2		□1,2 m	7,7	1,28	1,28	1450
S 23A-2		□1,2 m	3,2	1,3	1,28	620
K 439A K 437A		□1,6 m	5,21 5,21	1,67 1,67	1,62 1,62	2230 1850
Mât raccord / Verbindungsmast Connecting mast / Tramo unión Elemento raccordo / Tramo raccord Переходная мачта		□1,6/1,2 m	2,94	2,06	2,1	2100
Bases / Kranbasen / Crane bases Bases / Basi / Bases Фундамент под кран						
Pied de scellement / Verankerungsfuss Fixing angles / Pie de empotramiento Montante da annegare / Angulos fixadores анкера		P 12C P 12D P 41A	0,49 0,49 0,37	0,49 0,49 0,37	1,12 1,12 1,14	110 165 135
Bras de croix / Fundamentkruzträger Cross girder / Brazo en cruz Braccio croce / Braço da cruz Поперечная балка		ZC 2030 ZD 2030	5,63 6,62	0,47 0,47	1,45 1,45	1735 1930
Bras de croix / Fundamentkruzträger Cross girder / Brazo en cruz Braccio croce / Braço da cruz Поперечная балка		ZC 2030 ZD 2030	5,63 6,62	0,82 0,82	1,16 1,16	1500 1690
Bras de croix / Fundamentkruzträger Cross girder / Brazo en cruz Braccio croce / Braço da cruz Поперечная балка		ZE 12A	4,22	0,63	1,27	1170
1/2 Bras de croix / 1/2 Fundamentkruzträger 1/2 Cross girder / 1/2 Brazo en cruz 1/2 Braccio croce / 1/2 Braço da cruz 1/2 Поперечная балка		ZE 12A	2,25	0,44	1,27	725
1/2 Bras de croix / 1/2 Fundamentkruzträger 1/2 Cross girder / 1/2 Brazo en cruz 1/2 Braccio croce / 1/2 Braço da cruz 1/2 Поперечная балка		ZE 12A	2,25	0,39	1,27	730

Mécanismes / Triebwerke / Mechanisms / Mecanismos / Meccanismi
 Mecanismos / Механизмы

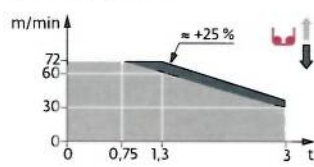
400 V - 50 Hz							ch - PS hp	kW	
	25 LVF 13 Optima	m/min	36	57	71	86	25	18	225 m
		t	2,5	1,45	1,1	0,62			
	25 LVF 15 Optima	m/min	30	48	60	72	25	18	228 m
		t	3	1,7	1,3	0,75			
	2 DVF 2	m/min	0 → 51				2	1,5	
	RVF 51 Optima+	tr/min U/min rpm	0 → 0,8				5,5	4	
	ZE 12A 	TVD 324	26				2 x 4	2 x 2,9	
	ZC 2030 ZD 2030 	RT 224	25				2 x 4	2 x 2,9	

 IEC 60204-32	 kVA
400 V (+10% -10%) 50 Hz	25 LVF : 33 kVA

25 LVF 13 Optima



25 LVF 15 Optima



	FR	DE	EN	ES	IT	PT	RU
	Profil de vent suivant EN 14439 C25-D25	Windbedingungen gemäss EN 14439 C25-D25	Wind conditions according to EN 14439 C25-D25	Conformidad de los condiciones de viento according to EN 14439 C25-D25	Condizioni del vento secondo EN 14439 C25-D25	Perfil de vento conforme EN 14439 C25-D25	Ветровой режим в соответствии с EN 14439 C25-D25
	Appel de flèche	Auslegerüberhöhung	Jib elevation	Elevación de la flecha	Inclinazione braccio	Desvio da lança	подъем стрелы
	Réactions en service	Reaktionskräfte in Betrieb	Reactions in service	Reacciones en servicio	Reazioni in servizio	Reacções em serviço	Реакция при работе
	Réactions hors service	Reaktionskräfte außer Betrieb	Reactions out of service	Reacciones fuera de servicio	Reazioni fuori servizio	Reacções fora de serviço	Реакция в покое
	Hauteur sans cabine	Höhe ohne Kabine	Height without cab	Altura sin cabina	Altezza senza cabina	Altura sem cabina	Высота без кабины
	Poids à vide sans lest avec flèche et hauteur maximum	Gewicht ohne Last, ohne Ballast, mit Ausleger und max. Höhe	Weight without load, without ballast, with jib and max height	Peso en vacío sin lastre, con flecha y altura máxima	Peso a vuoto, senza zavorra, con braccio e altezza massimi.	Peso em vazio sem lastro com lança e altura máxima.	Вес пустого, без балласта, со стрелой, максимальной высоты.
	Poids total du lest	Ballast-Gesamtgewicht	Total ballast weight	Peso total del lastre	Peso totale della zavorra	Peso total do lastro	Общий вес балласта
	Camion 13,4 m	Lkw 13,4 m	Lorry 13,4 m	Camión 13,4 m	Camion 13,4 m	Camião 13,4 m	Резусовой автомобиль 13,4 м
	Conteneur High Cube 40', et/ou Flat Rack 20'	Container High Cube 40', und/oder Flat Rack 20'	Container High Cube 40', and/or Flat Rack 20'	Contenedor High Cube 40', y/o Flat Rack 20'	Container High Cube 40', e/ou Flat Rack 20'	Contentor High Cube 40', e/ou Flat Rack 20'	40-футовый контейнер повышенной вместимости High Cube, и/или 20-футовая открытая платформа Flat Rack
	Cadre d'ancrage serré	Fester Verankerungsrahmen	Tightened anchorage frame	Marco de anclaje de apriete	Quadro di ancoraggio stretto	Quadro de amarração apertado	Прикрепленная анкерная рама
	Cadre d'ancrage desserré	Losser Verankerungsrahmen	Loosened anchorage frame	Marco de anclaje de desapriete	Quadro di ancoraggio allentato	Quadro de amarração solto	Отсоединенная анкерная рама
	Levage	Heben	Hoisting	Elevación	Sollevamento	Elevação	Подъем
	Distribution	Katzfahren	Trolleying	Distribución	Distribuzione	Distribuição	Перемещение по стреле
	Orientation	Schwenken	Siewing	Orientación	Rotazione	Rotação	Поворот
	Translation	Kranfahren	Travelling	Traslación	Traslazione	Translação	Перемещение крана
	Puissance nominale	Nennleistung	Rated power	Potencia nominal	Potenza nominale	Potência nominal	Номинальная мощность
	Nous consulter	Auf Anfrage	Consult us	Consultarnos	Consultateci	Consultar-nos	Проконсультируйтесь у нас
	Document commercial non contractuel. Pour toute information technique se référer à la notice correspondante.	Unverbindliches Vertriebsdokument. Für technische Informationen, siehe die entsprechenden Anweisungen.	This commercial document is not legally binding. For any technical information, please refer to the corresponding instructions	Documento comercial no contractual. Para cualquier información técnica, ver la notia correspondiente.	Documento commerciale non vincolante, per tutte le informazioni tecniche fare riferimento al catalogo istruzioni.	Documento comercial não contratual. Para qualquer informação técnica complementar consultar as respectivas instruções.	Этот коммерческий документ не является юридически обязательным. Для получения технической информации, см. соответствующие инструкции.

- Bau- und Industriekrane
- Verkauf-Vermietung-Service
- Hebebühnen
- Scheren-Bühnen
- Teleskop-Arbeitsbühnen
- Verkauf-Vermietung
- Transporte
- Spezialtransporte
- Greiferarbeiten
- Seilwindarbeiten
- LKW mit Ladekran

BISCHAG

Grienstrasse 17
4227 Büsserach
Telefon 061 781 55 11
Fax 061 781 55 12
www.bischag.ch



Manitowoc - Americas
Manitowoc, Wisconsin, USA
 Tel: +1 920 684 6621
 Fax: +1 920 683 6277

Shady Grove, Pennsylvania, USA
 Tel: +1 717 597 8121
 Fax: +1 717 597 4062

Manitowoc - Europe, Middle East & Africa
Ecully, France
 Tel: +33 (0)4 72 18 20 20
 Fax: +33 (0)4 72 18 20 00

Manitowoc - Asia & Pacific
Shanghai, China
 Tel: +86 21 6457 0066
 Fax: +86 21 6457 4955



SERVICE



VERMIETUNG



VERKAUF



Bau- und Industriekrane
LKW-Kranarbeiten
Spezialtransporte
Hydraulikservice
Arbeitsbühnen
Teleskoplader



Wahlenstrasse 175
4242 Laufen



061 781 55 11



info@bischag.ch

