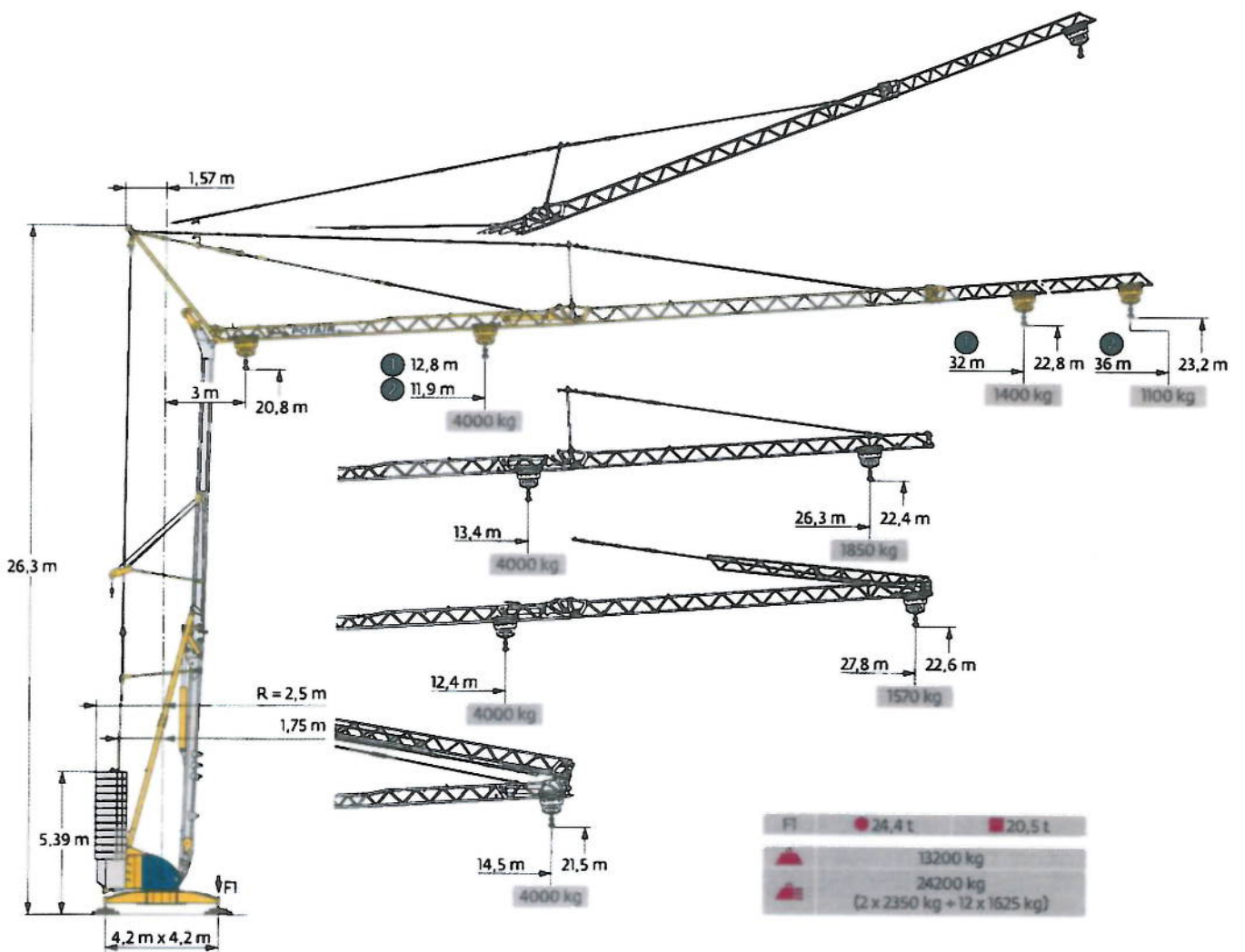
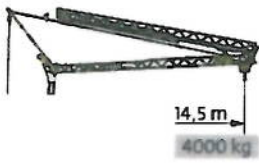


Potain Igo 42



Courbes de charges / Lastkurven / Load curves / Curvas de cargas / Curve di carico
 Curvas de carga / Кривые нагрузок



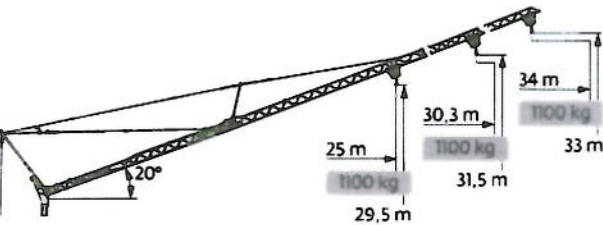
36 m	3	▶	14,5	m	
36 m	3	▶	14,5	4000	kg
				2000	kg
				2000	kg
32 m	3	▶	14,5	m	
32 m	3	▶	14,5	4000	kg
				2000	kg
				2000	kg
26,3	3	▶	14,5	m	
26,3	3	▶	14,5	4000	kg
				2000	kg
				2000	kg



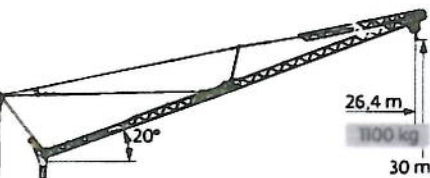
3	▶	11,9	12	14	16	18	20	20,8	21,8	22	24	26	28	30	32	34	36	m	
3	▶	11,9	12	14	16	18	20	20,8	21,8	22	24	26	28	30	32	34	36	4000	kg
																		3950	kg
																		3255	kg
3	▶	11,9	12	14	16	18	20	20,8	21,8	22	24	26	28	30	32	34	36	2000	kg
																		1885	kg
																		1860	kg
3	▶	11,9	12	14	16	18	20	20,8	21,8	22	24	26	28	30	32	34	36	2000	kg
																		1975	kg
																		1780	kg
3	▶	11,9	12	14	16	18	20	20,8	21,8	22	24	26	28	30	32	34	36	1850	kg
																		1895	kg
																		1855	kg
3	▶	11,9	12	14	16	18	20	20,8	21,8	22	24	26	28	30	32	34	36	1515	kg
																		1380	kg
																		1265	kg
3	▶	11,9	12	14	16	18	20	20,8	21,8	22	24	26	28	30	32	34	36	1165	kg
																		1080	kg
																		1000	kg
3	▶	11,9	12	14	16	18	20	20,8	21,8	22	24	26	28	30	32	34	36	1100	kg
																		1000	kg
																		1100	kg



36 m	3	▶	12,4	14	16	18	20	21,7	22	22,6	24	26	27,8	m	
36 m	3	▶	12,4	14	16	18	20	21,7	22	22,6	24	26	27,8	4000	kg
														3425	kg
														2900	kg
32 m	3	▶	12,4	14	16	18	20	21,7	22	22,6	24	26	27,8	2000	kg
														1965	kg
														1900	kg
32 m	3	▶	12,4	14	16	18	20	21,7	22	22,6	24	26	27,8	2000	kg
														1865	kg
														1700	kg



36 m	3	▶	34	m	
36 m	3	▶	34	1000	kg
				1100	kg
				1100	kg
32 m	3	▶	30,3	m	
32 m	3	▶	30,3	1000	kg
				1000	kg
				1100	kg
26,3 m	3	▶	25	m	
26,3 m	3	▶	25	1000	kg
				1000	kg
				1100	kg



36 m	3	▶	26,4	m	
36 m	3	▶	26,4	1000	kg
				1000	kg
				1100	kg



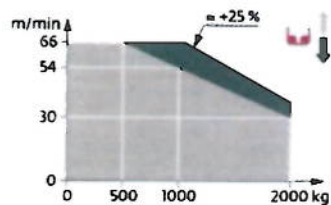
36 m	3	▶	13,8	m	
36 m	3	▶	13,8	1000	kg
				1000	kg
				1100	kg

Mécanismes / Triebwerke / Mechanisms / Mecanismos / Meccanismi
 Mecanismos / Механизмы

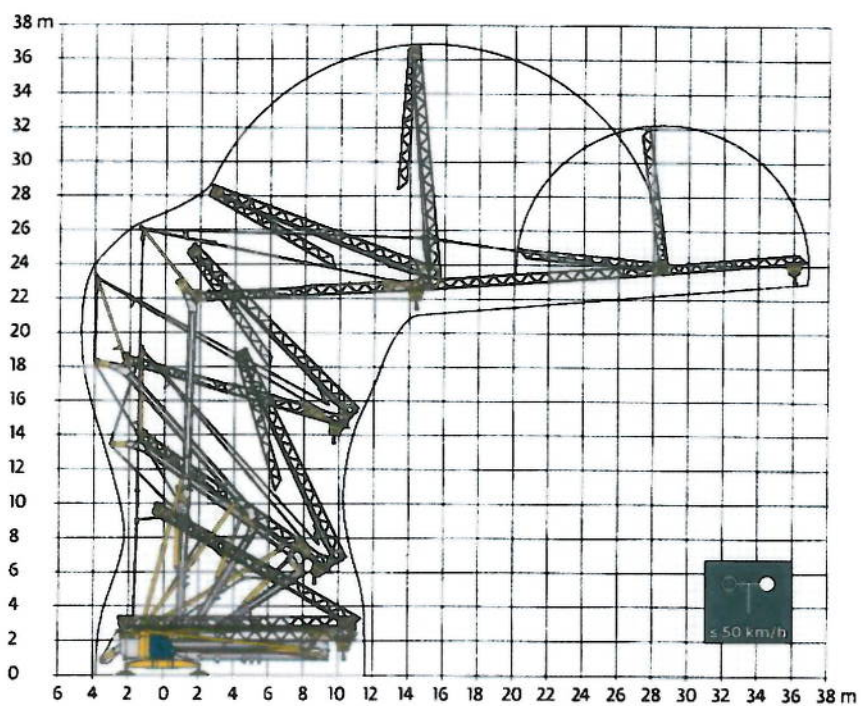
400 V - 50 Hz 480 V - 60 Hz			L↑					UU↑					ch-PS hp	kW
▲	15 LVF 10 Optima	m/min	3,6	18	30	54	66	1,8	9	15	27	33	15	11
		kg	2000	2000	2000	1000	500	4000	4000	4000	2000	1000		
◀▶	3 DVF 5	m/min	15 - 30 - 45 (0 → 1000 kg) 15 - 30 - 41 (1000 → 4000 kg)									3	2,2	
●	RVF 41 Optima+	tr/min U/min rpm	0 → 0,8									2	3	

IEC 60204-32	kVA
400 V (+10% -10%) 50 Hz 480 V (+6% -10%) 60 Hz	22 kVA

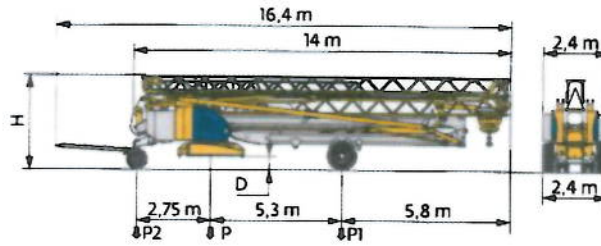
15 LVF 10 Optima



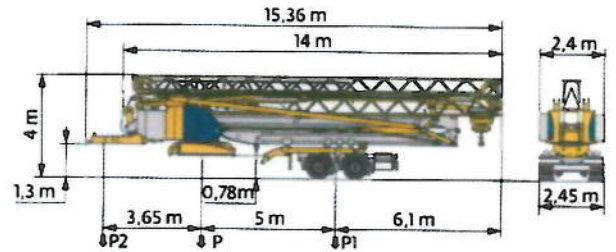
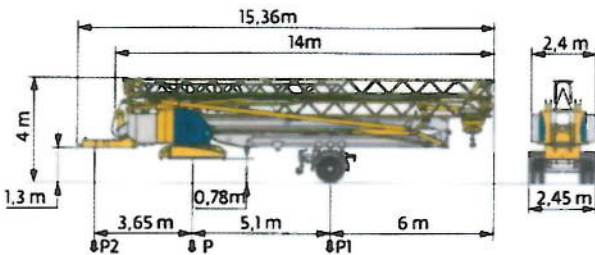
Montage / Montage / Erection / Montaje / Montaggio
 Montagem / Монтаж



Transport / Transport / Transport / Transporte / Trasporto
Transporte / Транспортировка



	km/h	D (m)	H (m)	P (kg)	P1 (kg)	P2 (kg)
DJ100/S120	10	0,36/0,21	3,52/3,37	19280	10980	8300
DJ105/S125	25	0,36/0,21	3,52/3,37	19570	10650	8920



	km/h	P (kg)	P1 (kg)	P2 (kg)
SL121/J135	25	20190	12730	7460

	km/h	P (kg)	P1 (kg)	P2 (kg)
SL122/J215M	80	21260	13910	7350

FR

- R Rayon de giration
- Nous consulter
- Reactions en service
- Reactions hors service
- ▲ Poids à vide, sans lest sans trains de transport, avec flèche max et hauteur standard
- ▲ Poids total du lest
- ⚙ Levage
- Distribution
- 📄 Orientation
- ⚡ Puissance nominale

DE

- Schwenk radius
- Auf Anfrage
- Reaktionskräfte in Betrieb
- Reaktionskräfte außer Betrieb
- Gewicht ohne Last, ohne Ballast, ohne Transportachsen mit max Auslager und Standardhöhe
- Ballast-Gesamtgewicht
- Heben
- Katzfahren
- Schwenken
- Nennleistung

EN

- Rear slewing radius
- Consult us
- Reactions in service
- Reactions out of service
- Weight without load, without ballast, without transport axes, with max. jib and standard height
- Total ballast weight
- Hoisting
- Trolleying
- Slewing
- Rated power

ES

- Radio de giro
- Consultarnos
- Reacciones en servicio
- Reacciones fuera de servicio
- Peso en vacío, sin lastre, sin trenes de transporte con flecha y altura estándar
- Peso total del lastre
- Elevación
- Distribución
- Orientación
- Potencia nominal

IT

- Raggio di rotazione
- Consultateci
- Reazioni in servizio
- Reazioni fuori servizio
- Peso a vuoto, senza zavorra, senza assali di trasporto, con braccio max e altezza standard
- Peso totale della zavorra
- Sollevamento
- Distribuzione
- Rotazione
- Potenza nominale

PT

- Raio de rotação
- Consultar-nos
- Reacções em serviço
- Reacções fora de serviço
- Peso em vazio, sem lastro, sem eixos de transporte com lança máxima e altura standard.
- Peso total do lastro
- Elevação
- Distribuição
- Rotação
- Potência nominal

RU

- Задний габарит
- Проконсультируйтесь у нас
- Реакция при работе
- Реакция в покое
- Вес без груза, без балласта, без осей для транспортировки, с максимальным вылетом стрелы и стандартной высотой
- Общий вес балласта
- Подъем
- Перемещение по стреле
- Поворот
- Номинальная мощность



Document commercial non contractuel. Pour toute information technique se référer à la notice correspondante

Unverbindliches Vertriebsdokument. Für technische Informationen, siehe die entsprechenden Anweisungen

This commercial document is not legally binding. For any technical information, please refer to the corresponding instructions

Documento comercial no contractual. Para cualquier información técnica, ver la noticia correspondiente

Documento commerciale non vincolante. Per tutte le informazioni tecniche fare riferimento al catalogo istruzioni

Documento comercial não contractual. Para qualquer informação técnica complementar consultar as respectivas instruções

Этот коммерческий документ не является юридически обязательным. Для получения технической информации, см соответствующие инструкции

- Bau- und Industriekräne
- Verkauf-Vermietung-Service
- Hebebühnen
- Scheren-Bühnen
- Teleskop-Arbeitsbühnen
- Verkauf-Vermietung
- Transporte
- Spezialtransporte
- Greiferarbeiten
- Seilwindarbeiten
- LKW mit Ladekran

BISCHAG

Grienstrasse 17
4227 Büsserach
Telefon 061 781 55 11
Fax 061 781 55 12
www.bischag.ch



Manitowoc - Americas
Manitowoc, Wisconsin, USA
+1 920 684 6621
+1 920 683 6277

Manitowoc - Pennsylvania, USA
+1 717 597 8121
+1 717 597 4062

Manitowoc - Europe, Middle East & Africa
Ecully, France
Tel: +33 (0)4 72 18 20 20
Fax: +33 (0)4 72 18 20 00

Manitowoc - Asia & Pacific
Shanghai, China
Tel: +86 21 6457 0066
Fax: +86 21 6457 4955



SERVICE



VERMIETUNG



VERKAUF



Bau- und Industriekrane
Schwertransporte
Hydraulikservice
LKW-Kranarbeit
Arbeitsbühnen
Teleskoplader



Wahlenstrasse 175, 4242 Laufen



061 781 55 11



info@bischag.ch

