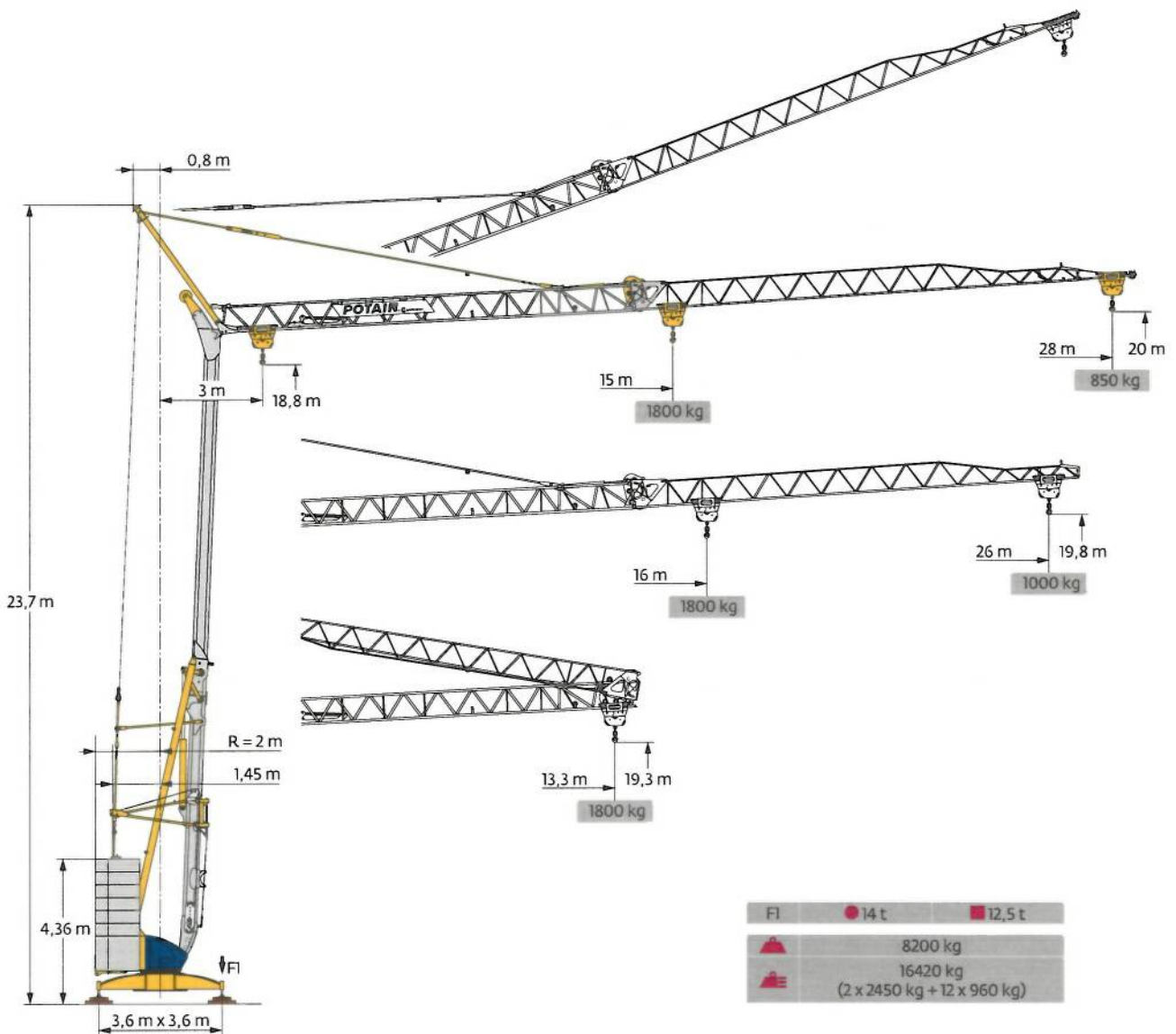
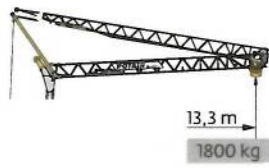


Potain Igo 22



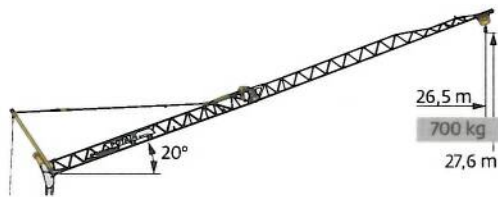
Courbes de charges / Lastkurven / Load curves / Curvas de cargas / Curve di carico
 Curvas de carga / Кривые нагрузок



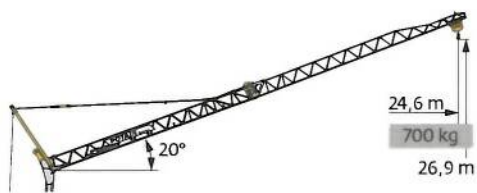
28 m	3	▶	13,3 m
			1800 kg
26 m	3	▶	13,3 m
			1800 kg



3	▶	15	16	17	18	19	20	21	22	23	24	25	26	27	28	m	
			1800	1670	1555	1450	1360	1275	1205	1140	1080	1025	975	930	890	850	kg
3	▶	16	17	18	19	20	21	22	23	24	25	26					
			1800	1665	1555	1455	1370	1290	1220	1160	1100	1050	1000				





















28 m	3	▶	26,5 m
			700 kg



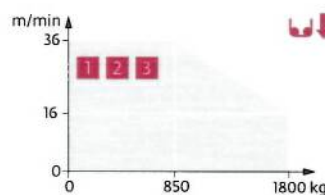
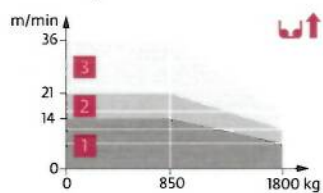
26 m	3	▶	24,6 m
			700 kg

Mécanismes / Triebwerke / Mechanisms / Mecanismos / Meccanismi
 Mecanismos / Механизмы

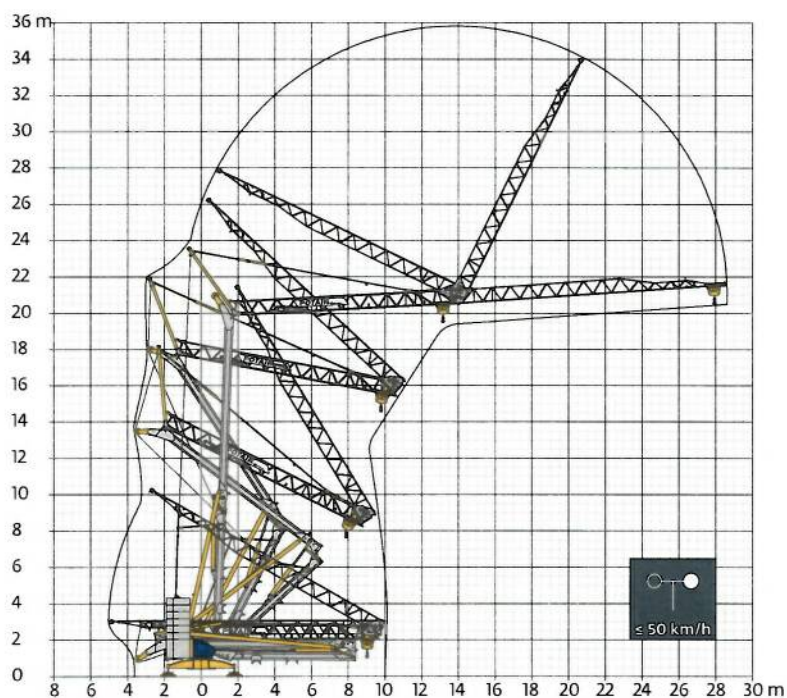
230 V - 50 Hz 400 V - 50 Hz 480 V - 60 Hz					ch - PS hp	kW	
	8 LVF 9 Optima	230 V \pm / 20 A 1	m/min	 3,5  7  16  14  36	3,3	2,4	
		kg	1800	1800	850		
		230 V \pm / 32 A 2	m/min	 3,5  11  16  21  36	5,2	3,8	
kg	1800	1800	850				
400 V 3	m/min	 3,5  16  36	7,5	5,5			
kg	1800	1800	850				
	1 DVF 4		m/min	14 → 28 (850 → 1800 kg) 14 → 36 (0 → 850 kg)	1,5	1,1	
	RVF 31		tr/min U/min rpm	0 → 0,8	2	1,5	

 IEC 60204-32	 kVA
230 V (+10% -10%) 50 Hz 400 V (+10% -10%) 50 Hz 480 V (+6% -10%) 60 Hz	230 V 20 A : 4,6 kVA 230 V 32 A : 7,4 kVA 400 V / 480 V : 11 kVA

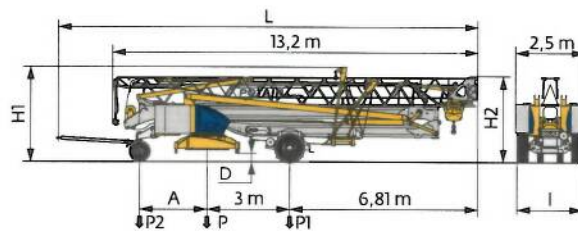
8 LVF 9 Optima



Montage / Montage / Erection / Montaje / Montaggio
 Montagem / Монтаж



Transport / Transport / Transport / Transporte / Trasporto
Transporte / Транспортировка



	km/h	A (m)	D (m)	H1 (m)	H2 (m)	L (m)	I (m)	P (kg)	P1 (kg)	P2 (kg)
DS62/S81	10	2,35	0,36/0,21	3,5/3,35	3,18/3,03	14,48	2,2	13650	8500	5150
DS61/S125	25	2,45	0,36/0,21	3,5/3,35	3,18/3,03	14,77	2,4	14355	9165	5190

FR

- Rayon de giration
- Nous consulter
- Réactions en service
- Réactions hors service
- Poids à vide, sans lest, sans trains de transport, avec flèche maxi et hauteur standard
- Poids total du lest
- Levage
- Distribution
- Orientation
- 50 Hz Monophasé
- Puissance nominale

DE

- Schwenk radius
- Auf Anfrage
- Reaktionskräfte in Betrieb
- Reaktionskräfte außer Betrieb
- Gewicht ohne Last, ohne Ballast, ohne Transportachsen, mit max. Auslager und Standardhöhe
- Ballast-Gesamtgewicht
- Heben
- Katzfahren
- Schwenken
- 50 Hz Einphasige
- Nennleistung

EN

- Rear slewing radius
- Consult us
- Reactions in service
- Reactions out of service
- Weight without load, without ballast, without transport axes, with max. jib and standard height
- Total ballast weight
- Hoisting
- Trolleying
- Slewing
- 50 Hz Single phase
- Rated power

ES

- Radio de giro
- Consultarnos
- Reacciones en servicio
- Reacciones fuera de servicio
- Peso en vacío, sin lastre, sin trenes de transporte con flecha y altura estandar
- Peso total del lastre
- Elevación
- Distribución
- Orientación
- 50 Hz Monofásica
- Potencia nominal

IT

- Raggio di rotazione
- Consultateci
- Reazioni in servizio
- Reazioni fuori servizio
- Peso a vuoto, senza zavorra, senza assali di trasporto, con braccio max e altezza standard
- Peso totale della zavorra
- Sollevamento
- Distribuzione
- Rotazione
- 50 Hz Monofase
- Potenza nominale

PT

- Raio de rotação
- Consultar-nos
- Reacções em serviço
- Reacções fora de serviço
- Peso em vazio, sem lastro, sem eixos de transporte com lança máxima e altura standard.
- Peso total do lastro
- Elevação
- Distribuição
- Rotação
- 50 Hz monofásica
- Potência nominal

RU

- Задний габарит
- Проконсультируйтесь у нас
- Реакция при работе
- Реакция в покое
- Вес без груза, без балласта, без осей для транспортировки, с максимальным вылетом стрелы и стандартной высотой
- Общий вес балласта
- Подъем
- Перемещение по стреле
- Поворот
- Однофазное напряжение 50Hz
- Номинальная мощность



Document commercial non contractuel. Pour toute information technique se référer à la notice correspondante.

Unverbindliches Vertriebsdokument. Für technische Informationen, siehe die entsprechenden Anweisungen.

This commercial document is not legally binding. For any technical information, please refer to the corresponding instructions.

Documento comercial no contractual. Para cualquier información técnica, ver la noticia correspondiente.

Documento commerciale non vincolante, per tutte le informazioni tecniche fare riferimento al catalogo istruzioni.

Documento comercial não contractual. Para qualquer informação técnica complementar consultar as respectivas instruções.

Этот коммерческий документ не является юридически обязательным. Для получения технической информации, см соответствующие инструкции.

BISCHAG

- Bau- und Industriekrane
- Verkauf-Vermietung-Service
- Hebebühnen
- Scheren-Bühnen
- Teleskop-Arbeitsbühnen
- Verkauf-Vermietung
- Transporte
- Spezialtransporte
- Greiferarbeiten
- Seilwindarbeiten
- LKW mit Ladekran

Grienstrasse 17
4227 Büsserach
Telefon 061 781 55 11
Fax 061 781 55 12
www.bischag.ch



Manitowoc - Americas
Manitowoc, Wisconsin, USA
Tel: +1 920 684 6621
Fax: +1 920 683 6277

Shady Grove, Pennsylvania, USA
Tel: +1 717 597 8121
Fax: +1 717 597 4062

Manitowoc - Europe, Middle East & Africa
Ecully, France
Tel: +33 (0)4 72 18 20 20
Fax: +33 (0)4 72 18 20 00

Manitowoc - Asia & Pacific
Shanghai, China
Tel: +86 21 6457 0066
Fax: +86 21 6457 4955



SERVICE



VERMIETUNG



VERKAUF



Bau- und Industriekrane
Schwertransporte
Hydraulikservice
LKW-Kranarbeit
Arbeitsbühnen
Teleskoplader



Wahlenstrasse 175, 4242 Laufen



061 781 55 11



info@bischag.ch

