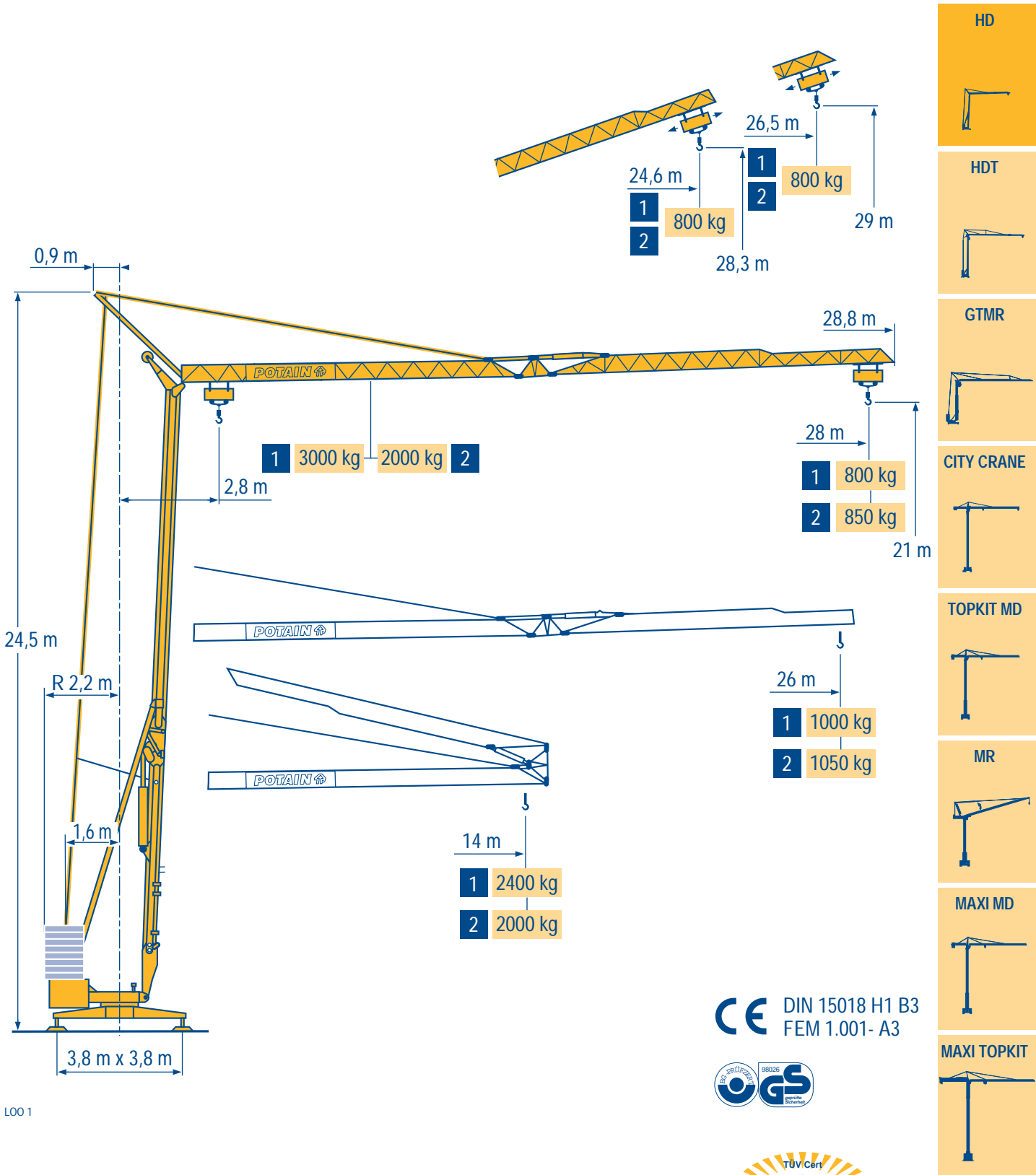
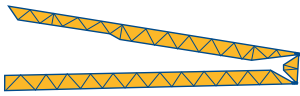


HD 26 A



LOO1



| | | | | | |
|------|-------|------|------|------|------|
| 28 m | 2,8 ▶ | 11,8 | 12 | 13 | 14 |
| ▲▲▲ | | 3000 | 2920 | 2640 | 2400 |
| 26 m | 2,8 ▶ | 11,8 | 12 | 13 | 14 |
| ▲▲▲ | | 3000 | 2920 | 2640 | 2400 |



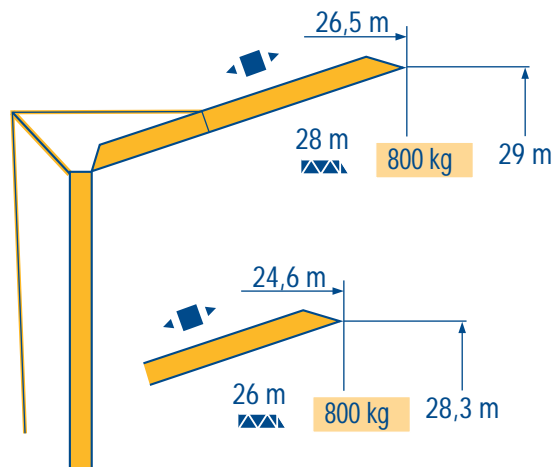
| | | | | | | | | | | | | | | | |
|--------|------|------|------|------|------|------|------|------|------|------|------|------|-----|-----|----|
| 3000kg | | | | | | | | | | | | | | | |
| 10,2 | 11 | 12 | 13 | 14 | 15 | 16 | 17 | 18 | 19 | 20 | 22 | 24 | 26 | 28 | m |
| 3000 | 2710 | 2420 | 2180 | 1980 | 1815 | 1670 | 1545 | 1435 | 1340 | 1250 | 1105 | 985 | 885 | 800 | kg |
| 11 | 12 | 13 | 14 | 15 | 16 | 17 | 18 | 19 | 20 | 22 | 24 | 26 | m | | |
| 3000 | 2695 | 2430 | 2210 | 2025 | 1870 | 1730 | 1610 | 1500 | 1405 | 1245 | 1110 | 1000 | kg | | |

2000kg

| | | |
|------|-------|------|
| 28 m | 2,8 ▶ | 14 |
| ▲▲▲ | | 2000 |
| 26 m | 2,8 ▶ | 14 |
| ▲▲▲ | | 2000 |

| | | | | | | | | | | | |
|------|------|------|------|------|------|------|------|------|-----|-----|----|
| 14,1 | 15 | 16 | 17 | 18 | 19 | 20 | 22 | 24 | 26 | 28 | m |
| 2000 | 1850 | 1710 | 1580 | 1475 | 1380 | 1295 | 1150 | 1030 | 935 | 850 | kg |
| 15,4 | 16 | 17 | 18 | 19 | 20 | 22 | 24 | 26 | m | | |
| 2000 | 1910 | 1770 | 1650 | 1545 | 1450 | 1290 | 1160 | 1050 | kg | | |

LOO1



LOO1



Chariot distributeur

Traversing trolley

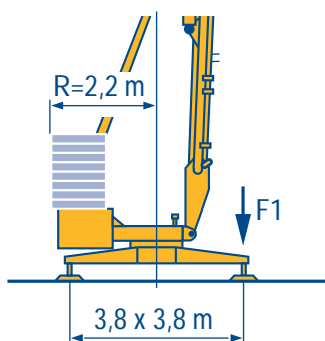
Carrellino distributore



Verfahrbare laufkatze

Carro distribuidor

变幅小车



F1 ● 18,3 t ■ 12 t

▲ 9,7 t

LOO 1

| | | | | | |
|--|---|--|----|--|---|
| <ul style="list-style-type: none"> ● Réactions en service ■ Réactions hors service ▲ A vide sans lest ni train de transport avec flèche et hauteur maximum | F | <ul style="list-style-type: none"> ● Reactions in service ■ Reactions out of service ▲ Without load, ballast or transport axles, with maximum jib and maximum height. | GB | <ul style="list-style-type: none"> ● Reazioni in servizio ■ Reazioni fuori servizio ▲ A vuoto, senza zavorra ne assali di trasporto con braccio massimo e altezza massima | I |
| <ul style="list-style-type: none"> ● Reaktionskräfte in Betrieb ■ Reaktionskräfte außer Betrieb ▲ Ohne Last, Ballast und Transportachse, mit Maximalausleger und Maximalhöhe. | D | <ul style="list-style-type: none"> ● Reacciones en servicio ■ Reacciones fuera de servicio ▲ Sin carga, sin lastre, ni tren de transporte, flecha y altura máxima. | E | <ul style="list-style-type: none"> ● 工作状态下的反应 ■ 非工作状态下的反应 ▲ 空载无压重也无运输车有吊臂和最大高度 | C |

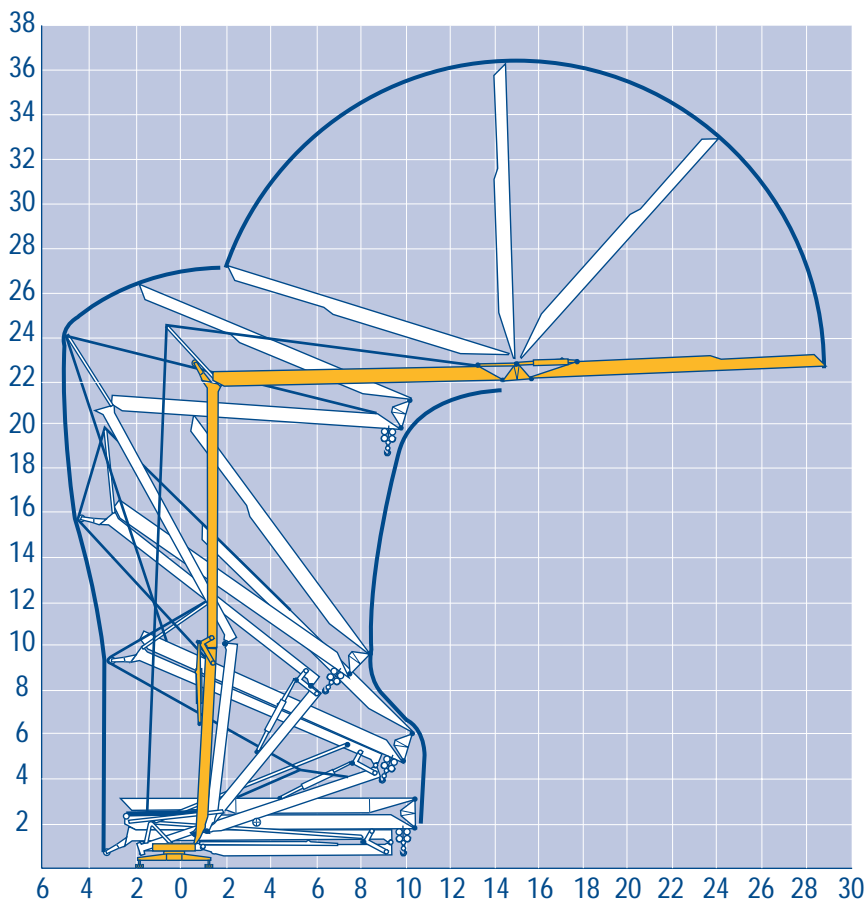
Mécanismes
Antriebe

| | | | | | | | | ch - PS hp | kW | |
|---|-----------|---------------------|---------|------|------|------|------|---------------|-----|-----|
| | | | | | | | | | | |
| ▲ | 15 RPC 10 | m/min | 9 | 27 | 54 | 4,5 | 13,5 | 27 | 15 | 11 |
| | | kg | 1500 | 1500 | 1000 | 3000 | 3000 | 2000 | | |
| ▲ | 9 PC 10 | m/min | 6,6 | 20 | 40 | - | - | - | 8,2 | 6 |
| | | kg | 2000 | 2000 | 1050 | - | - | - | | |
| ▲ | 2 D2 V4 | m/min | 18 - 36 | | | | | | 2 | 1,5 |
| ▲ | RCV 20 | tr/min U/min rpm | 0 → 1 | | | | | | 3 | 2,2 |

| | | | | |
|------------------------|--|----------------------------------|-----|-----------------|
| CEI 38 | | IEC 38 | kVA | |
| 400 V (+6% -10%) 50 Hz | | 9 PC : 14 kVA 15 RPC : 20 kVA | | 84/534 - 87/405 |

LOO 1

| | | | | | |
|--|---|---|----|---|---|
| <ul style="list-style-type: none"> ▲ Levage ▲ Distribution ▲ Orientation ▲ Conforme aux directives CEE 84/534 et 87/405 sur le niveau acoustique | F | <ul style="list-style-type: none"> ▲ Hoisting ▲ Trolleying ▲ Slewing ▲ In compliance with the EEC 84/534 and 87/405 Instructions on noise level | GB | <ul style="list-style-type: none"> ▲ Sollevamento ▲ Diritribuzione ▲ Rotazione ▲ Conforme alle direttive CEE 84/534 e 87/405 sul livello acustico | I |
| <ul style="list-style-type: none"> ▲ Heben ▲ Katzfahren ▲ Schwenken ▲ Gemäss EWG-Richtlinien 84/534 und 87/405 für den Schall-Leistungspegel | D | <ul style="list-style-type: none"> ▲ Elevación ▲ Distribución ▲ Orientación ▲ Conforme con las directivas CEE 84/534 y 87/405 sobre el nivel acustico | E | <ul style="list-style-type: none"> ▲ 起升 ▲ 变幅 ▲ 回转 ▲ 符合 CEE 84/534 - CEE 87/405 声晌度规定 | C |

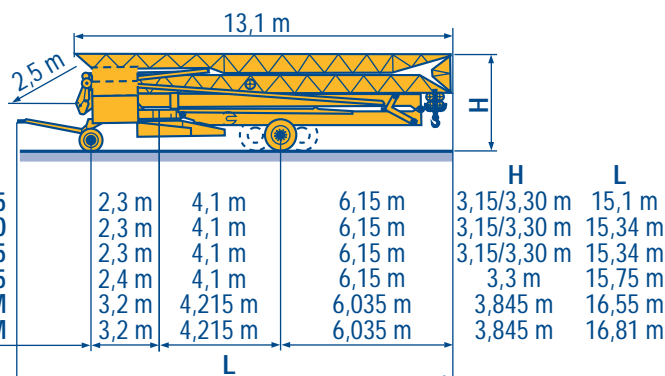
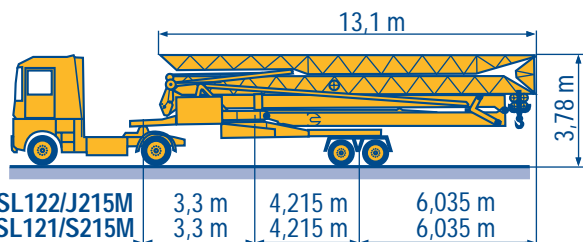


Transport
Transport

F Transport
D Transporte

GB Trasporto
E 运输

I
C



SL122/J215M

SL121/S215M

CJ125M/J215M

DJ126M/S215M

DJ126M/S105

DS60/S105

DS95/S105

DS80/J100

Chantier

F Site

GB Cantiere

I

Baustelle

D Obra

E 工地运输

C



18.Rue de Charbonnières, B.P. 173-F
69132 ECULLY Cedex
Tél. (33)04.72.20.20.0
Fax (33)04.72.20.20.0
http://www.potain.fr
E-mail : mkt@potain.fr

HD 26 A

Copyright.Reproduction interdite © POTAIN 1998

Deutschland
POTAIN GmbH Tel : 06.105.704.0
Italia
POTAIN S.p.A. Tel : 039.65.631
China
Zhangjiagang POTAIN Tel : 520. 877.1451



SERVICE



VERMIETUNG



VERKAUF



Bau- und Industriekrane
Schwertransporte
Hydraulikservice
LKW-Kranarbeit
Arbeitsbühnen
Teleskoplader



Wahlenstrasse 175, 4242 Laufen



061 781 55 11



info@bischag.ch

