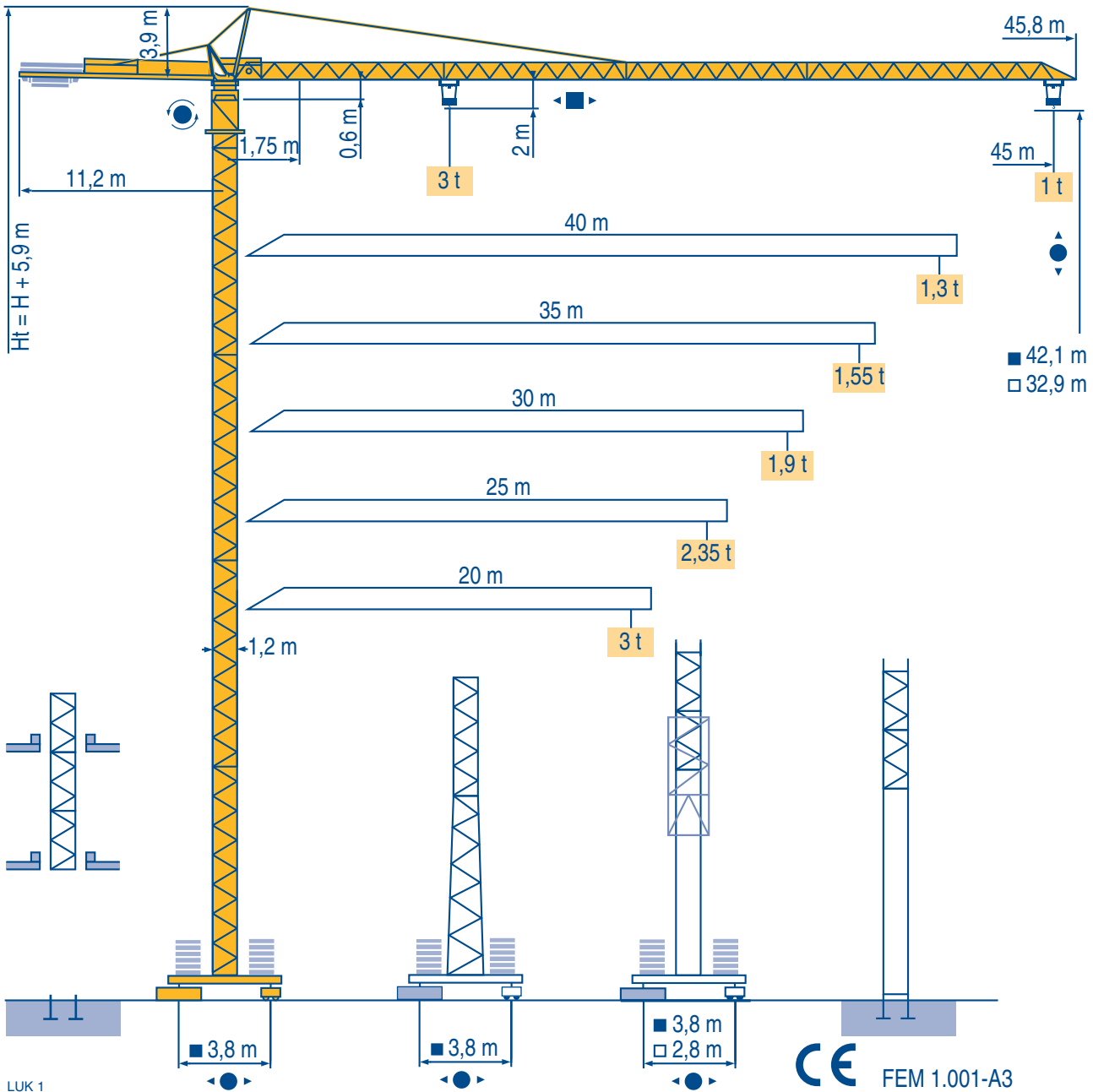


CITY CRANE MC 68 B



Igo
HD
HDM



HDT



GTMR



CITY CRANE



TOPKIT MD
MAXI MD



MAXI TOPKIT



Topless MDT

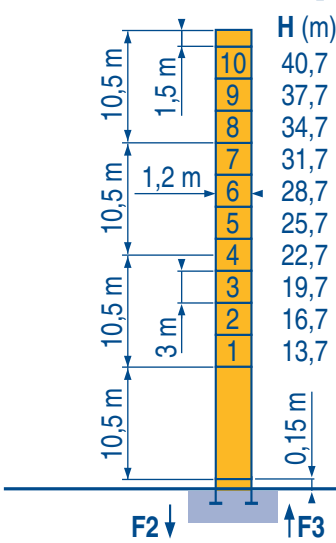


MR



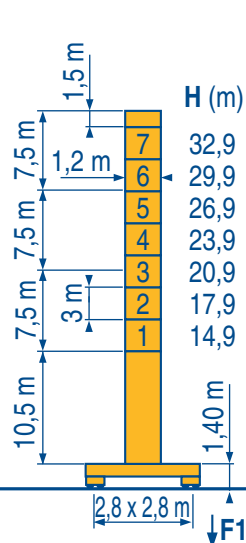


20 m → 40 m



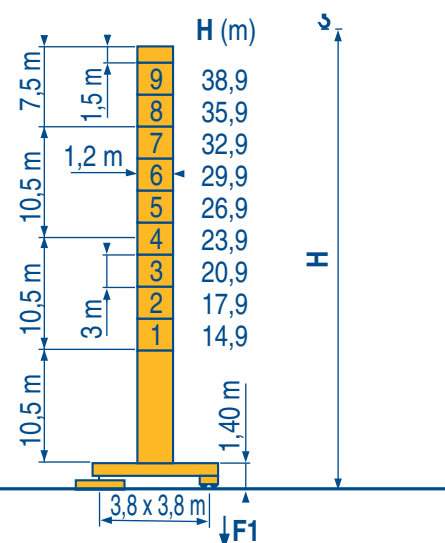
P 12 C

F2	● 62 t	■ 96 t
F3	● 49 t	■ 84 t
🏗️	15,5 t	



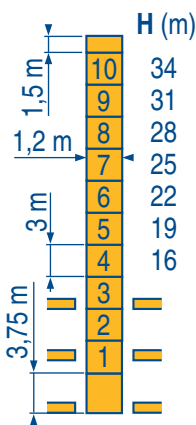
ZE 12 A

F1	● 42 t	■ 53 t
🏗️	18 t	



ZF 12 A / ZFC 12 A

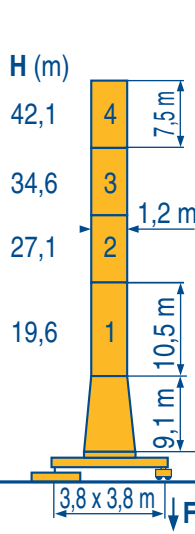
F1	● 39 t	■ 52 t
🏗️	20,5 t	



B 125 A / P 12 B

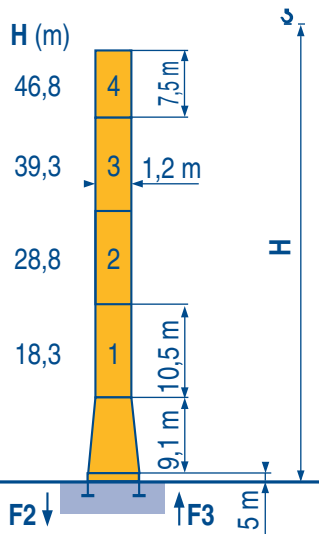


LUK 2



ZC 16 A / ZFC 16 A

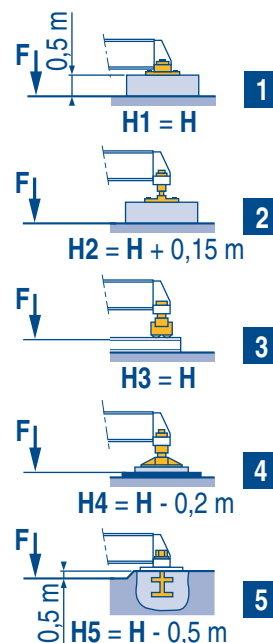
F1	● 45 t	■ 61 t
🏗️	23 t	



P 16 A

F2	● 57 t	■ 100 t
F3	● 42 t	■ 86 t
🏗️	19 t	

ZE - ZF - ZC - ZFC



👁️ Voir télescopage sur dalles
● Réactions en service
■ Réactions hors service
🏗️ A vide sans lest (ni train de transport) avec flèche et hauteur maximum.

👁️ See climbing crane
● Reactions in service
■ Reactions out of service
🏗️ Without load, ballast (or transport axles), with maximum jib and maximum height.

👁️ Consultare gru in cavedio
● Reazioni in servizio
■ Reazioni fuori servizio
🏗️ A vuoto, senza zavorra (ne assali di trasporto) con braccio massimo e altezza massima.

👁️ Siehe Kletterkrane im Gebäude
● Reaktionskräfte in Betrieb
■ Reaktionskräfte außer Betrieb
🏗️ Ohne Last, Ballast (und Transportachse), mit Maximalausleger und Maximalhöhe.

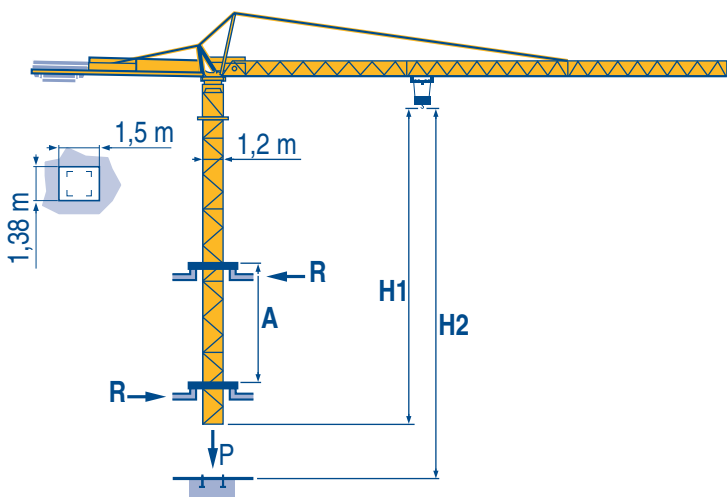
👁️ Veá grua trepadora
● Reacciones en servicio
■ Reacciones fuera de servicio
🏗️ Sin carga, sin lastre, (ni tren de transporte), flecha y altura máxima.

👁️ 见楼板顶升
● 工作状态下的反应
■ 非工作状态下的反应
🏗️ 空载无压重也无运输车有吊臂和最大高度

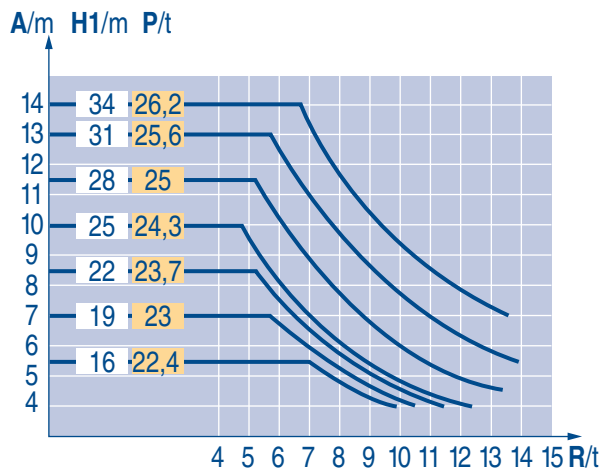
45 m	1,75 ▶	18,6	20	22	25	27	30	32	35	37	40	42	45 m
▲▲▲	☞	3	2,75	2,45	2,1	1,9	1,7	1,55	1,4	1,3	1,17	1,1	1 t
40 m	1,75 ▶	20,1	22	25	27	30	32	35	37	40 m			
▲▲▲	☞	3	2,7	2,3	2,1	1,86	1,72	1,54	1,44	1,3			
35 m	1,75 ▶	20,2	22	25	27	30	32	35 m					
▲▲▲	☞	3	2,7	2,3	2,1	1,86	1,73	1,55					
30 m	1,75 ▶	20,2	22	25	27	30 m							
▲▲▲	☞	3	2,7	2,3	2,1	1,9							
25 m	1,75 ▶	20,3	22	25 m									
▲▲▲	☞	3	2,7	2,35									
20 m	1,75 ▶	20 m											
▲▲▲	☞	3	t										

LUK 1

B 125 A



LUK 1



A Distance entre cadres
H1 Hauteur grue
P Poids de la grue (en service)
R Réaction horizontale

F Distance between collars
Crane height
Crane weight (in service)
Horizontal reaction

GB Distanza fra i telai
Altezza gru
Peso della gru (in servizio)
Reazione orizzontale

I
C

A Abstand zwischen den Rahmen
H1 Kranhöhe
P Krangewicht (in Betrieb)
R Horizontalkräfte

D Distancia entra marcos
Altura grúa
Peso de la grúa (en servicio)
Reaccion horizontal

E 各附着框之间距离
工作状态下塔机高度
工作状态下塔机重量
水平反力

C

						ch - PS hp	kW	
	15 PC 15	m/min	7	19	38	15	11	89 m
		t	3	3	1,5			
	23 PC 15	m/min	7,2	28	56	23	17	159 m
		t	3	3	1,5			
	3 D2 V5	m/min	21 - 42			3	2,2	
	RCV 40	tr/min U/min rpm	0 → 0,8			6	4,5	
	ZE - ZF 	TVD 324	26			2 x 4	2 x 2,9	
	ZC - ZFC 	RT 224	25			2 x 4	2 x 2,9	

CEI 38	IEC 38	kVA	
400 V (+6% -10%) 50 Hz		15 PC : 25 kVA 23 PC : 35 kVA	84/534 - 87/405

LUK 1

	Levage Distribution Orientation Translation 	F	Hoisting Trolleying Slewing Travelling In compliance with the EEC 84/534 and 87/405 Instructions on noise level	GB	Sollevamento Distribuzione Rotazione Traslazione Conforme alle direttive CEE 84/534 e 87/405 sul livello acustico	I
	Heben Katzfahren Schwenken Kranfahren 	D	Elevación Distribución Orientación Traslación Conforme con las directivas CEE 84/534 y 87/405 sobre el nivel acustico	E	起升 变幅 回转 行走 符合 CEE 84/534 - CEE 87/405 声晌度规定	C

Réf. 2000.36 LUK 2



18.Rue de Charbonnières, B.P. 173
F-69132 ECULLY Cedex
Tél. (33)04.72.18.20.20
Fax (33)04.72.18.20.00
<http://www.potain.com>
E-mail : mkt@potain.fr

CITY CRANE MC 68 B
Copyright.Reproduction interdite © POTAIN 2000

Deutschland
POTAIN GmbH Tel : 06.105.704.0

Italia
POTAIN S.p.A. Tel : 0.331.49.33.11

Singapore
POTAIN PTE LTD *Courtesy of Crane Market*

Modificazioni riservate / Modificaciones reservadas / Subject to modification / Änderungen vorbehalten / Modifications réservées / Printed in France