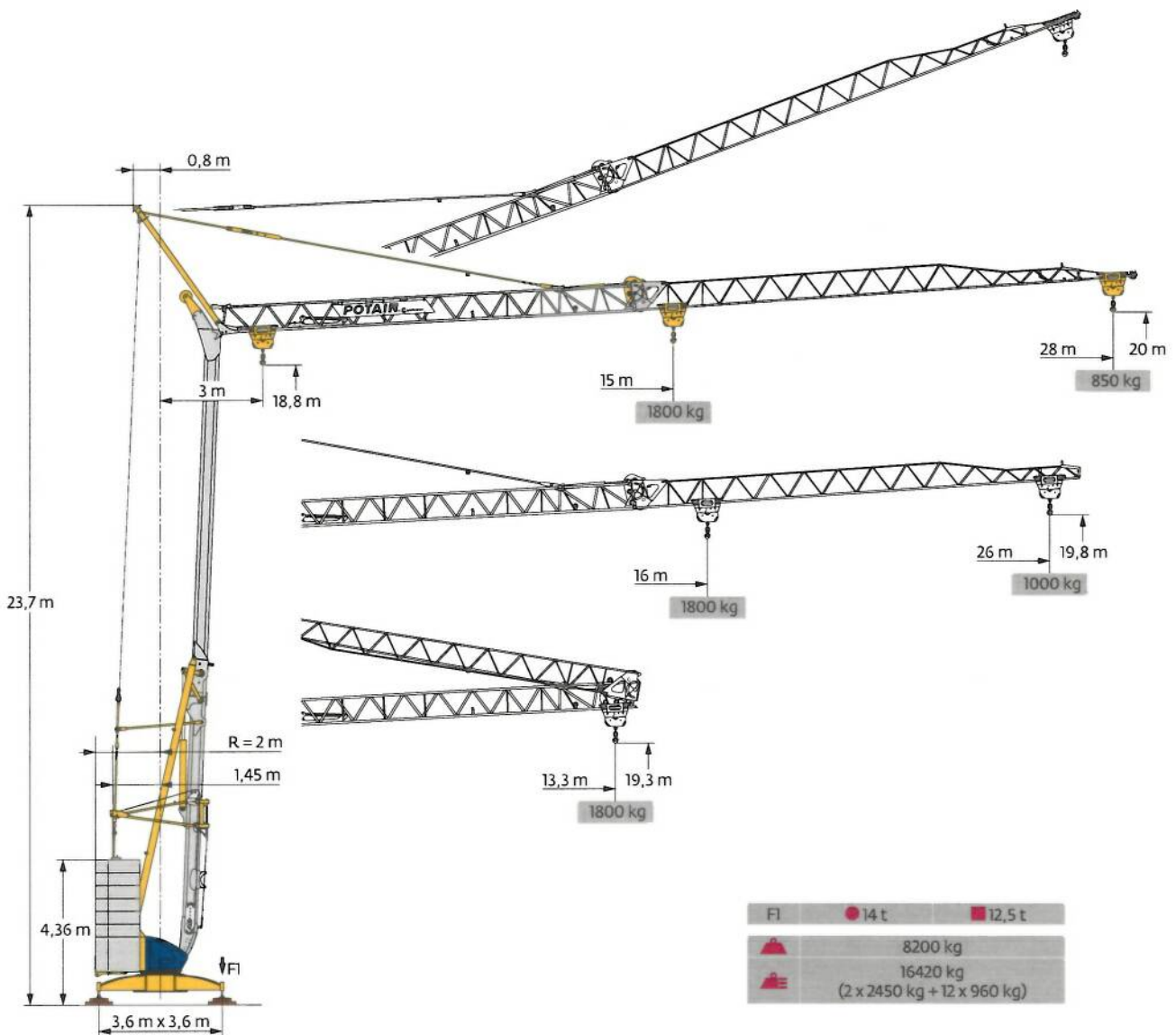
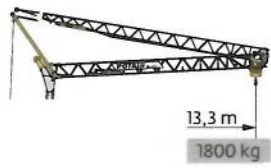


Potain Igo 22



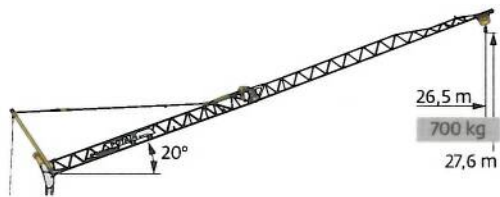
Courbes de charges / Lastkurven / Load curves / Curvas de cargas / Curve di carico
 Curvas de carga / Кривые нагрузок



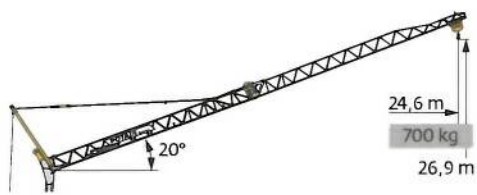
| | | | |
|------|---|---|---------|
| 28 m | 3 | ▶ | 13,3 m |
| | | | 1800 kg |
| 26 m | 3 | ▶ | 13,3 m |
| | | | 1800 kg |



| | | | | | | | | | | | | | | | | |
|---|---|----|------|------|------|------|------|------|------|------|------|------|------|-----|------|--------|
| 3 | ▶ | 15 | 16 | 17 | 18 | 19 | 20 | 21 | 22 | 23 | 24 | 25 | 26 | 27 | 28 m | |
| | | | 1800 | 1670 | 1555 | 1450 | 1360 | 1275 | 1205 | 1140 | 1080 | 1025 | 975 | 930 | 890 | 850 kg |
| 3 | ▶ | 16 | 17 | 18 | 19 | 20 | 21 | 22 | 23 | 24 | 25 | 26 m | | | | |
| | | | 1800 | 1665 | 1555 | 1455 | 1370 | 1290 | 1220 | 1160 | 1100 | 1050 | 1000 | | | kg |







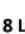













| | | | |
|------|---|---|--------|
| 28 m | 3 | ▶ | 26,5 m |
| | | | 700 kg |



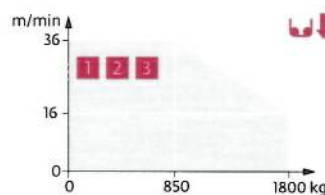
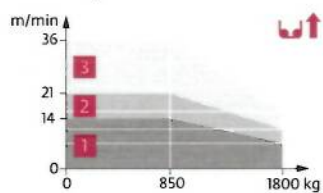
| | | | |
|------|---|---|--------|
| 26 m | 3 | ▶ | 24,6 m |
| | | | 700 kg |

Mécanismes / Triebwerke / Mechanisms / Mecanismos / Meccanismi
 Mecanismos / Механизмы

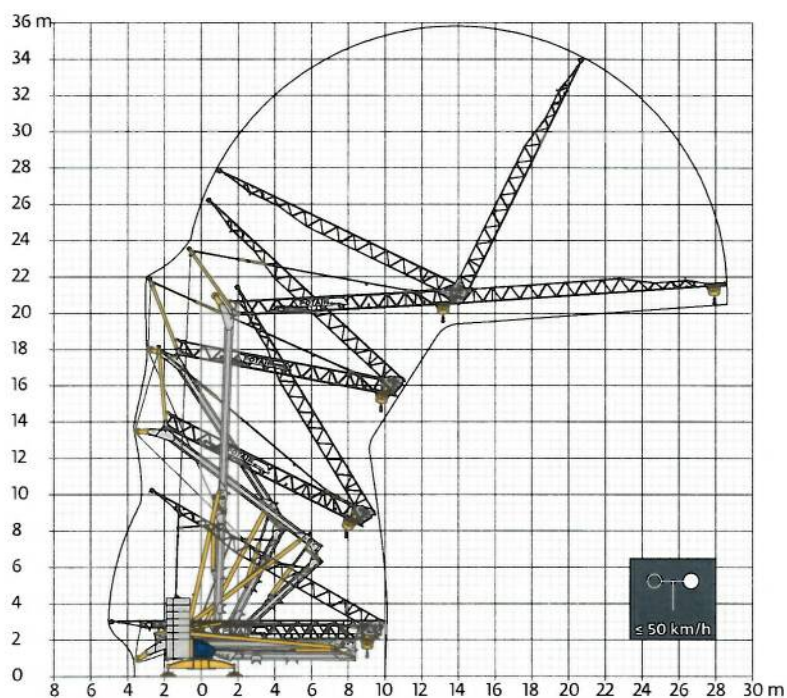
| 230 V - 50 Hz 400 V - 50 Hz 480 V - 60 Hz | | | | | ch - PS hp | kW |
|---|-----------------------|-----------------------------|------------------------|---|---------------|-----|
|  | 8 LVF 9 Optima | 230 V \pm / 20 A 1 | m/min |  3,5  7  16  14  36 | 3,3 | 2,4 |
| | | | kg | 1800 1800 850 | | |
| | | 230 V \pm / 32 A 2 | m/min |  3,5  11  16  21  36 | 5,2 | 3,8 |
| | | kg | 1800 1800 850 | | | |
| | | 400 V 3 | m/min |  3,5  16  36 | 7,5 | 5,5 |
| | | kg | 1800 1800 850 | | | |
|  | 1 DVF 4 | | m/min | 14 → 28 (850 → 1800 kg) 14 → 36 (0 → 850 kg) | 1,5 | 1,1 |
|  | RVF 31 | | tr/min U/min rpm | 0 → 0,8 | 2 | 1,5 |

|  IEC 60204-32 |  kVA |
|---|--|
| 230 V (+10% -10%) 50 Hz 400 V (+10% -10%) 50 Hz 480 V (+6% -10%) 60 Hz | 230 V 20 A : 4,6 kVA 230 V 32 A : 7,4 kVA 400 V / 480 V : 11 kVA |

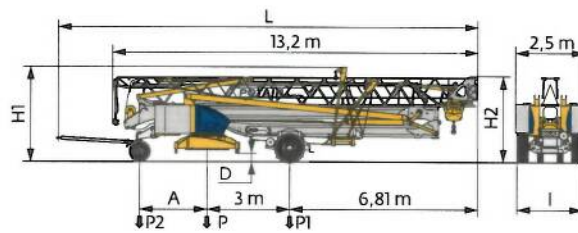
8 LVF 9 Optima



Montage / Montage / Erection / Montaje / Montaggio
 Montagem / Монтаж



Transport / Transport / Transport / Transporte / Trasporto
Transporte / Транспортировка



| | km/h | A (m) | D (m) | H1 (m) | H2 (m) | L (m) | I (m) | P (kg) | P1 (kg) | P2 (kg) |
|------------------|-----------|-------|-----------|----------|-----------|-------|-------|--------|---------|---------|
| DS62/S81 | 10 | 2,35 | 0,36/0,21 | 3,5/3,35 | 3,18/3,03 | 14,48 | 2,2 | 13650 | 8500 | 5150 |
| DS61/S125 | 25 | 2,45 | 0,36/0,21 | 3,5/3,35 | 3,18/3,03 | 14,77 | 2,4 | 14355 | 9165 | 5190 |

FR

- R** Rayon de giration
- ⓘ** Nous consulter
- Réactions en service
- Réactions hors service
- ⚖** Poids à vide, sans lest, sans trains de transport, avec flèche maxi et hauteur standard
- ⚖** Poids total du lest
- ⬆** Levage
- ⚙** Distribution
- 🔄** Orientation
- ⚡** 50 Hz Monophasé
- ⚡** Puissance nominale

DE

- Schwenk radius
- Auf Anfrage
- Reaktionskräfte in Betrieb
- Reaktionskräfte außer Betrieb
- Gewicht ohne Last, ohne Ballast, ohne Transportachsen, mit max. Auslager und Standardhöhe
- Ballast-Gesamtgewicht
- Heben
- Katzfahren
- Schwenken
- 50 Hz Einphasige
- Nennleistung

EN

- Rear slewing radius
- Consult us
- Reactions in service
- Reactions out of service
- Weight without load, without ballast, without transport axes, with max. jib and standard height
- Total ballast weight
- Hoisting
- Trolleying
- Slewing
- 50 Hz Single phase
- Rated power

ES

- Radio de giro
- Consultarnos
- Reacciones en servicio
- Reacciones fuera de servicio
- Peso en vacío, sin lastre, sin trenes de transporte con flecha y altura estándar
- Peso total del lastre
- Elevación
- Distribución
- Orientación
- 50 Hz Monofásica
- Potencia nominal

IT

- Raggio di rotazione
- Consultateci
- Reazioni in servizio
- Reazioni fuori servizio
- Peso a vuoto, senza zavorra, senza assali di trasporto, con braccio max e altezza standard
- Peso totale della zavorra
- Sollevamento
- Distribuzione
- Rotazione
- 50 Hz Monofase
- Potenza nominale

PT

- Raio de rotação
- Consultar-nos
- Reacções em serviço
- Reacções fora de serviço
- Peso em vazio, sem lastro, sem eixos de transporte com lança máxima e altura standard.
- Peso total do lastro
- Elevação
- Distribuição
- Rotação
- 50 Hz monofásica
- Potência nominal

RU

- Задний габарит
- Проконсультируйтесь у нас
- Реакция при работе
- Реакция в покое
- Вес без груза, без балласта, без осей для транспортировки, с максимальным вылетом стрелы и стандартной высотой
- Общий вес балласта
- Подъем
- Перемещение по стреле
- Поворот
- Однофазное напряжение 50Hz
- Номинальная мощность



Document commercial non contractuel. Pour toute information technique se référer à la notice correspondante.

Unverbindliches Vertriebsdokument. Für technische Informationen, siehe die entsprechenden Anweisungen.

This commercial document is not legally binding. For any technical information, please refer to the corresponding instructions.

Documento comercial no contractual. Para cualquier información técnica, ver la noticia correspondiente.

Documento commerciale non vincolante, per tutte le informazioni tecniche fare riferimento al catalogo istruzioni.

Documento comercial não contractual. Para qualquer informação técnica complementar consultar as respectivas instruções.

Этот коммерческий документ не является юридически обязательным. Для получения технической информации, см соответствующие инструкции.

BISCHAG

- Bau- und Industriekrane
- Verkauf-Vermietung-Service
- Hebebühnen
- Scheren-Bühnen
- Teleskop-Arbeitsbühnen
- Verkauf-Vermietung
- Transporte
- Spezialtransporte
- Greiferarbeiten
- Seilwindarbeiten
- LKW mit Ladekran

Grienstrasse 17
4227 Büsserach
Telefon 061 781 55 11
Fax 061 781 55 12
www.bischag.ch



Manitowoc - Americas
Manitowoc, Wisconsin, USA
Tel: +1 920 684 6621
Fax: +1 920 683 6277

Shady Grove, Pennsylvania, USA
Tel: +1 717 597 8121
Fax: +1 717 597 4062

Manitowoc - Europe, Middle East & Africa
Ecully, France
Tel: +33 (0)4 72 18 20 20
Fax: +33 (0)4 72 18 20 00

Manitowoc - Asia & Pacific
Shanghai, China
Tel: +86 21 6457 0066
Fax: +86 21 6457 4955