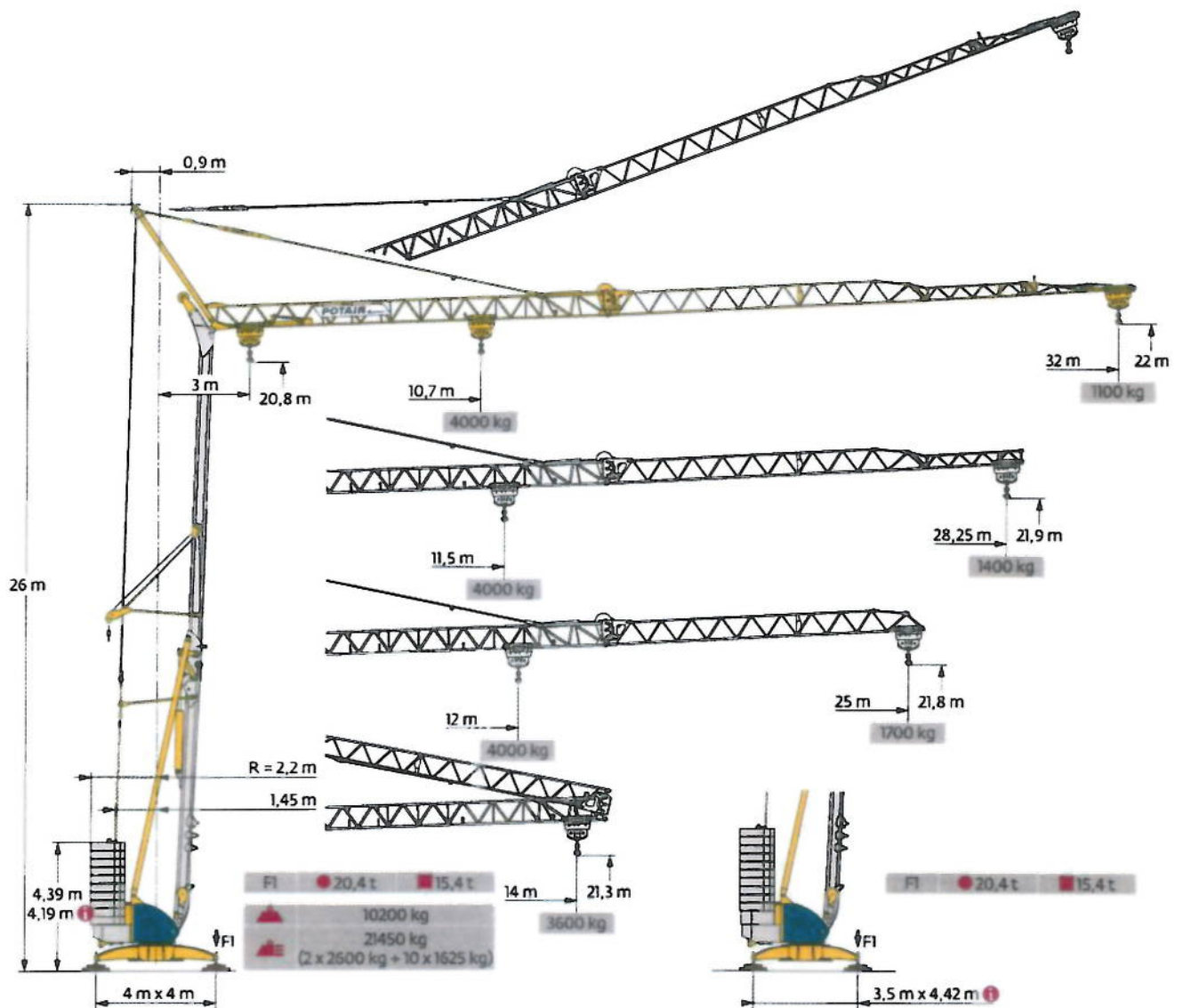
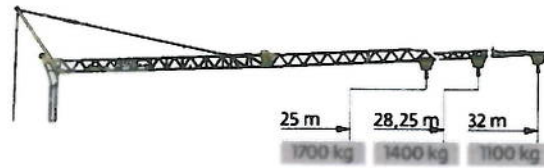


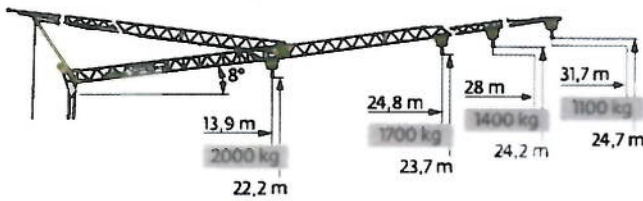
Potain Igo 36



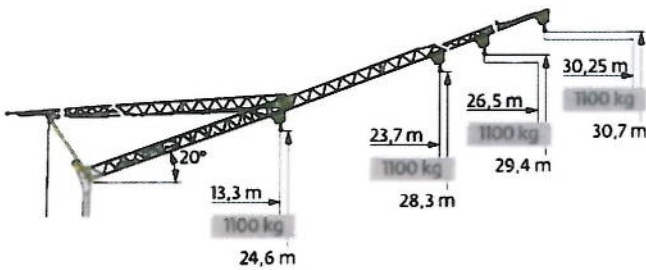
Courbes de charges / Lastkurven / Load curves / Curvas de cargas / Curve di carico
 Curvas de carga / Кривые нагрузок



32 m	3	▶	12,87	13	14	m	10,7	11	12	13	14	15	16	17	18	18,5	19	19,5	20	22	25	27	30	32	m			
3600 kg			4000	3950	3600	kg	4000	3870	3460	3125	2845	2610	2410	2230	2080	2000	1940	1880	1820	1615	1375	1250	1090	1000	kg			
2000 kg						kg													2000	1940	1880	1820	1615	1375	1250	1090	1000	kg
2000 kg						kg														2000	1940	1730	1485	1350	1190	1100	kg	
28,25 m	3	▶	12,87	13	14	m																						
1400 kg			4000	3950	3600	kg				11,5	12	13	14	15	16	17	18	19	20	21	22	25	27	28,25	m			
2000 kg						kg				4000	3790	3420	3120	2860	2640	2450	2280	2135	2000	1885	1780	1520	1375	1300	kg			
2000 kg						kg														2000	1885	1780	1520	1375	1300	kg		
																					2000	1890	1620	1480	1400	kg		
25 m	3	▶	12,87	13	14	m																						
1100 kg			4000	3950	3600	kg				12	13	14	15	16	17	18	19	20	20,8	21	21,8	23	25	m				
2000 kg						kg				4000	3600	3280	3010	2775	2580	2400	2250	2110	2000	1985	1895	1775	1600	kg				
2000 kg						kg														2000	1985	1895	1775	1600	kg			
2000 kg						kg															2000	1875	1700	kg				








32 m	3	▶	18,3	19	19,5	21	23	25	26	28	30	31,7	m			
1100 kg			2000	1910	1845	1685	1505	1355	1290	1175	1075	1000	kg			
2000 kg													kg			
2000 kg													kg			
28,25 m	3	▶	19,8	20,8	21	23	25	26	28	m						
1400 kg			2000	1890	1860	1660	1500	1425	1300	kg						
2000 kg										2000	1975	1770	1605	1530	1400	kg
25 m	3	▶	20,7	21,6	23	24,8	m									
1100 kg			2000	1895	1755	1600	kg									
2000 kg							2000	1860	1700	kg						



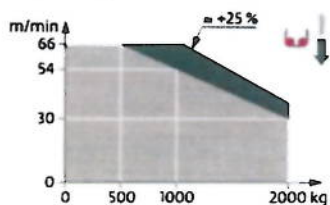
32 m	3	▶										30,25	m
1100 kg												1000	kg
2000 kg												1100	kg
28,25 m	3	▶										26,5	m
1100 kg												1000	kg
2000 kg												1100	kg
23 m	3	▶										23,7	m
1100 kg												1000	kg
2000 kg												1100	kg

Mécanismes / Triebwerke / Mechanisms / Mecanismos / Meccanismi
 Mecanismos / Механизмы

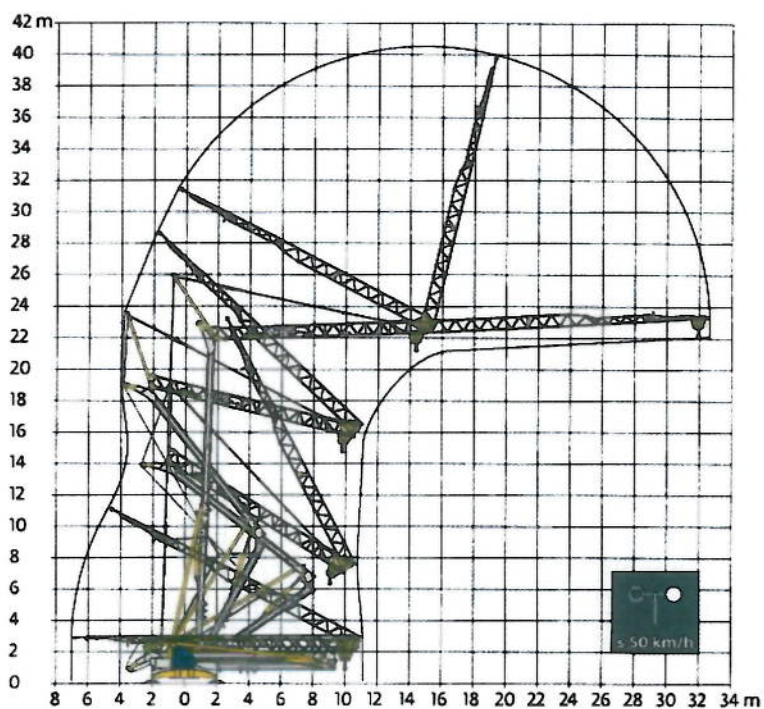
400 V - 50 Hz 480 V - 60 Hz		U↑					UU↑					ch - PS hp	kW	
	15 LVF 10 Optima	m/min	3,6	18	30	54	66	1,8	9	15	27	33	15	11
		kg	2000	2000	2000	1000	500	4000	4000	4000	2000	1000		
	3 DVF 5	m/min	15 - 30 - 41										3	2,2
	RVF 41 Optima+	tr/min U/min rpm	0 → 0,8										4	3

 IEC 60204-32	 kVA
400 V (+10% -10%) 50 Hz 480 V (+6% -10%) 60 Hz	22 kVA

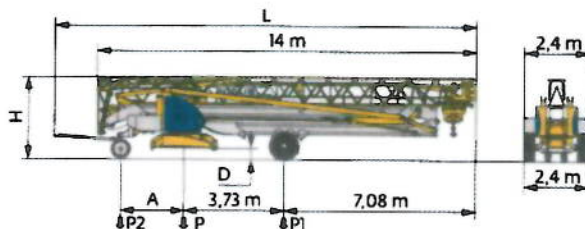
15 LVF 10 Optima



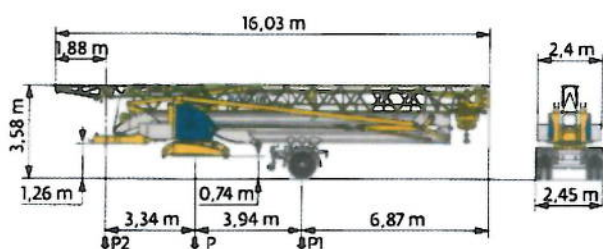
Montage / Montage / Erection / Montaje / Montaggio
 Montagem / Монтаж



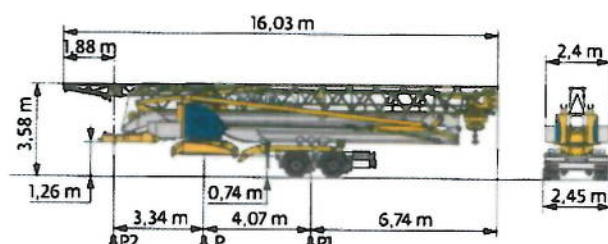
Transport / Transport / Transport / Transporte / Trasporto
Transporte / Транспортировка



	km/h	A (m)	D (m)	H (m)	L (m)	P (kg)	P1 (kg)	P2 (kg)
DS62/S120	10	2,35	0,36/0,21	3,2/3,05	15,48	16220	10290	5930
DS61/S125	25	2,45	0,36/0,21	3,2/3,05	15,77	16570	10590	5980



	km/h	P (kg)	P1 (kg)	P2 (kg)
SL121/J135	25	17480	11980	5500



	km/h	P (kg)	P1 (kg)	P2 (kg)
SL122/J215M	80	18555	12867	5688

	FR	DE	EN	ES	IT	PT	RU
	Rayon de giration	Schwenk radius	Rear slewing radius	Radio de giro	Raggio di rotazione	Raio de rotação	Задний габарит
	Nous consulter	Auf Anfrage	Consult us	Consultarnos	Consultateci	Consultar-nos	Проконсультируйтесь у нас
	Réactions en service	Reaktionskräfte in Betrieb	Reactions in service	Reacciones en servicio	Reazioni in servizio	Reacções em serviço	Реакция при работе
	Réactions hors service	Reaktionskräfte außer Betrieb	Reactions out of service	Reacciones fuera de servicio	Reazioni fuori servizio	Reacções fora de serviço	Реакция в покое
	Poids à vide, sans lest sans trains de transport, avec flèche maxi et hauteur standard	Gewicht ohne Last, ohne Ballast, ohne Transportachsen mit max Auslagerung und Standardhöhe	Weight without load, without ballast, without transport axes, with max jib and standard height	Peso en vacío, sin lastre, sin trenes de transporte con flecha y altura estándar	Peso a vuoto, senza zavorra, senza assali di trasporto, con braccio max e altezza standard	Peso em vazio, sem lastro, sem eixos de transporte com lança máxima e altura standard	Вес без груза, без балласта, без осей для транспортировки, с максимальной вылетом стрелы и стандартной высотой
	Poids total du lest	Ballast-Gesamtgewicht	Total ballast weight	Peso total del lastre	Peso totale della zavorra	Peso total do lastro	Общий вес балласта
	Lavage	Heben	Hoisting	Elevación	Sollevamento	Elevação	Подъем
	Distribution	Katzfahren	Trolleying	Distribución	Distribuzione	Distribuição	Перемещение по стреле
	Orientation	Schwenken	Slewing	Orientación	Rotazione	Rotação	Поворот
	Puissance nominale	Nennleistung	Rated power	Potencia nominal	Potenza nominale	Potência nominal	Номинальная мощность
	Document commercial non contractuel. Pour toute information technique se référer à la notice correspondante	Unverbindliches Vertriebsdokument. Für technische Informationen, siehe die entsprechenden Anweisungen	This commercial document is not legally binding. For any technical information, please refer to the corresponding instructions	Documento comercial no contractual. Para cualquier información técnica, ver la nota o correspondiente	Documento commerciale non vincolante. Per tutte le informazioni tecniche fare riferimento al catalogo istruzioni	Documento comercial não contractual. Para qualquer informação técnica complementar consultar as respectivas instruções	Этот коммерческий документ не является юридически обязательным. Для получения технической информации, см соответствующие инструкции

BISCHAG

- Bau- und Industriekrane
- Verkauf-Vermietung-Service
- Hebebühnen
- Scheren-Bühnen
- Teleskop-Arbeitsbühnen
- Verkauf-Vermietung
- Transporte
- Spezialtransporte
- Greiferarbeiten
- Seilwindarbeiten
- LKW mit Ladekran

Grienstrasse 17
4227 Büsserach
Telefon 061 781 55 11
Fax 061 781 55 12
www.bischag.ch



Manitowoc - Americas
Manitowoc, Wisconsin, USA
+1 920 684 6621
+1 920 683 6277

Manitowoc - Europe, Middle East & Africa
Ecully, France
Tel: +33 (0)4 72 18 20 20
Fax: +33 (0)4 72 18 20 00

Manitowoc - Asia & Pacific
Shanghai, China
Tel: +86 21 6457 0066
Fax: +86 21 6457 4955