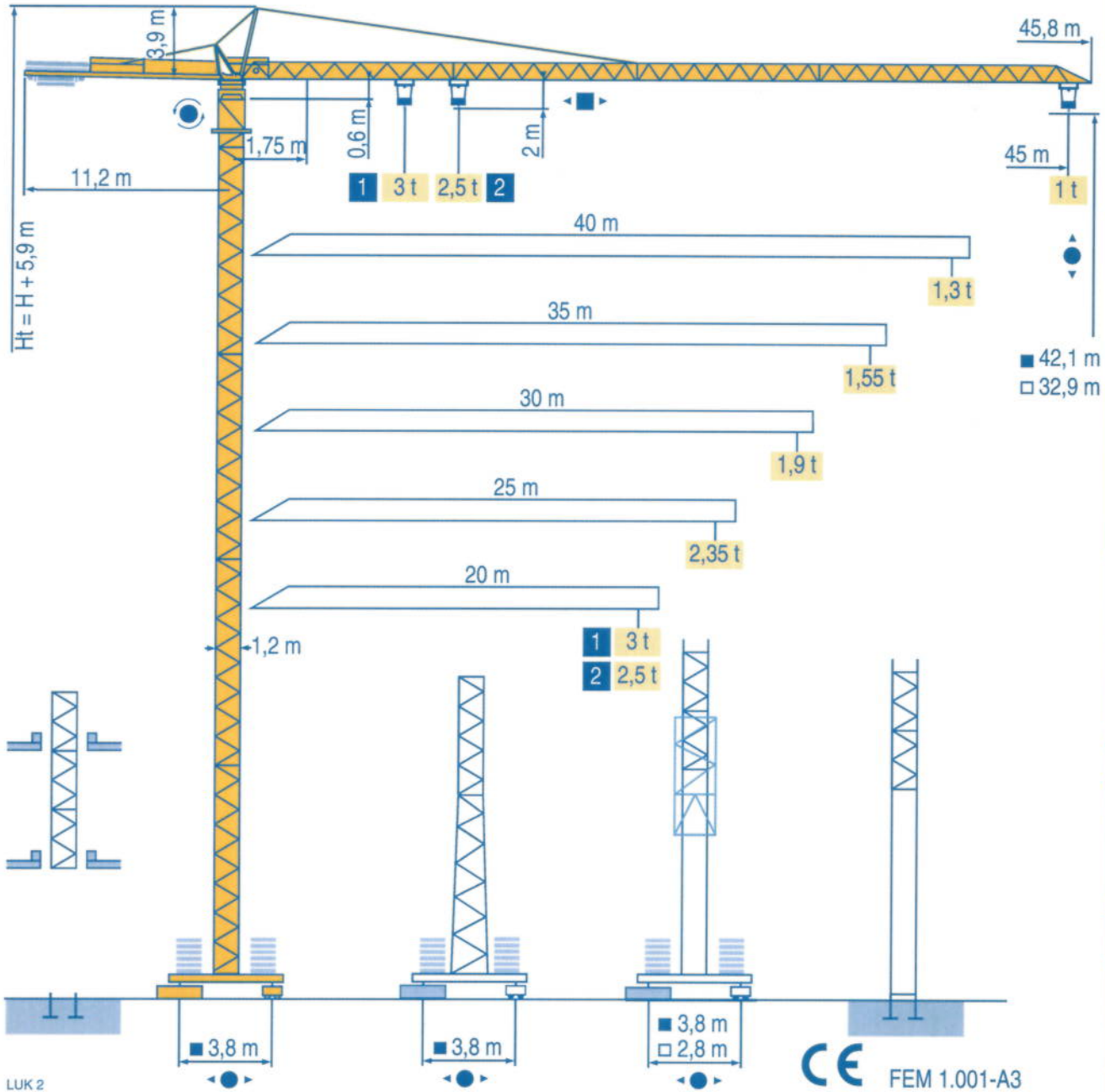


CITY CRANE MC 68 B



Igo
HD
HDM



HDT



GTMR



CITY CRANE



TOPKIT MD
MAXI MD



MAXI TOPKIT



Topless MDT

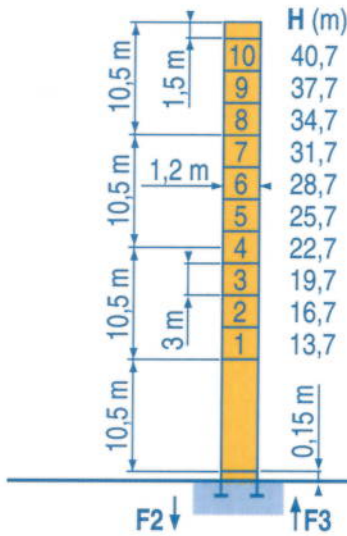


MR



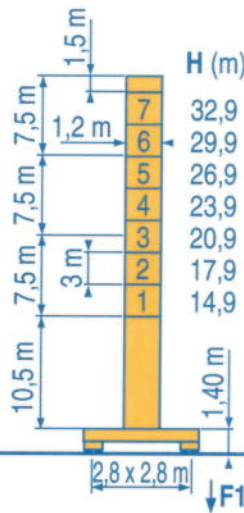


20 m → 45 m



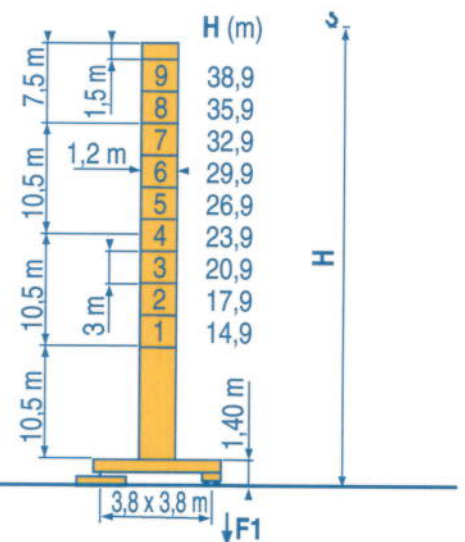
P 12 C

F2 ● 62 t ■ 96 t
F3 ● 49 t ■ 84 t
▲ 15,5 t



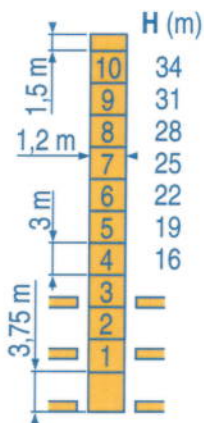
ZE 12 A

F1 ● 42 t ■ 53 t
▲ 18 t

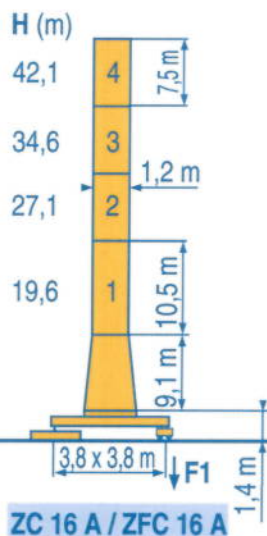


ZF 12 A / ZFC 12 A

F1 ● 39 t ■ 52 t
▲ 20,5 t

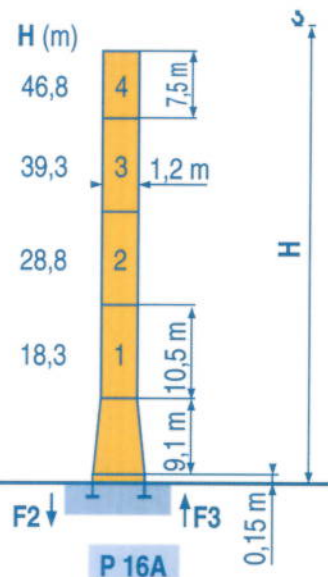


B 125 A / P 12 B



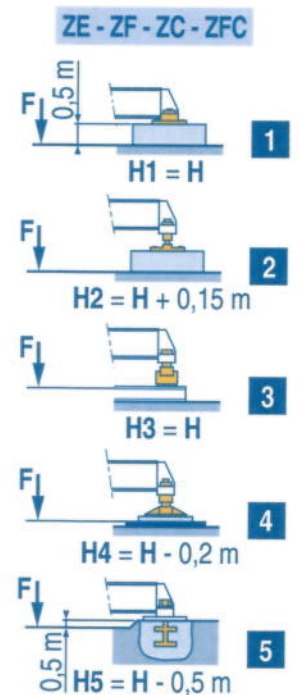
ZC 16 A / ZFC 16 A

F1 ● 45 t ■ 61 t
▲ 23 t



P 16 A

F2 ● 57 t ■ 100 t
F3 ● 42 t ■ 86 t
▲ 19 t



LUK 2

● Voir télescopage sur dalles
● Réactions en service
■ Réactions hors service
▲ A vide sans lest (ni train de transport) avec flèche et hauteur maximum.

● Siehe Kletterkrane im Gebäude
● Reaktionskräfte in Betrieb
■ Reaktionskräfte außer Betrieb
▲ Ohne Last, Ballast (und Transportachse), mit Maximalausleger und Maximalhöhe.

● See climbing crane
● Reactions in service
■ Reactions out of service
▲ Without load, ballast (or transport axles), with maximum jib and maximum height.

● Veá grúa trepadora
● Reacciones en servicio
■ Reacciones fuera de servicio
▲ Sin carga, sin lastre, (ni tren de transporte), flecha y altura máxima.

● Consultare gru in cavedio
● Reazioni in servizio
■ Reazioni fuori servizio
▲ A vuoto, senza zavorra (ne assali di trasporto) con braccio massimo e altezza massima.

● Ver telescopagem sobre lages
● Reações em serviço
■ Reações fora de serviço
▲ Sem carga (nem trem de transporte)-sem lastro com lança e altura máximas.

Courbes de charges
Lastkurven



Load diagrams
Curvas de cargas



Curve di carico
Curva de cargas



45 m	1,75 ▶	18,6	20	21,7	22	25	27	30	32	35	37	40	42	45 m
		3	2,75	-	2,45	2,1	1,9	1,7	1,55	1,4	1,3	1,17	1,1	1 t
			2,5	2,45	2,1	1,9	1,7	1,55	1,4	1,3	1,17	1,1	1 t	
40 m	1,75 ▶	20,1	22	23,5	25	27	30	32	35	37	40 m			
		3	2,7	-	2,3	2,1	1,86	1,72	1,54	1,44	1,3 t			
			2,5	2,3	2,1	1,86	1,72	1,54	1,44	1,3 t				
35 m	1,75 ▶	20,2	22	23,6	25	27	30	32	35 m					
		3	2,7	-	2,3	2,1	1,86	1,73	1,55 t					
			2,5	2,3	2,1	1,86	1,73	1,55 t						
30 m	1,75 ▶	20,2	22	23,6	25	27	30 m							
		3	2,7	-	2,3	2,1	1,9 t							
			2,5	2,3	2,1	1,9 t								
25 m	1,75 ▶	20,3	22	23,7	25 m									
		3	2,7	-	2,35 t									
			2,5	2,35 t										
20 m	1,75 ▶	20 m												
		3 t												
		2,5 t												

LUK 2

Télescopage sur dalles
Kletterkrane im Gebäude



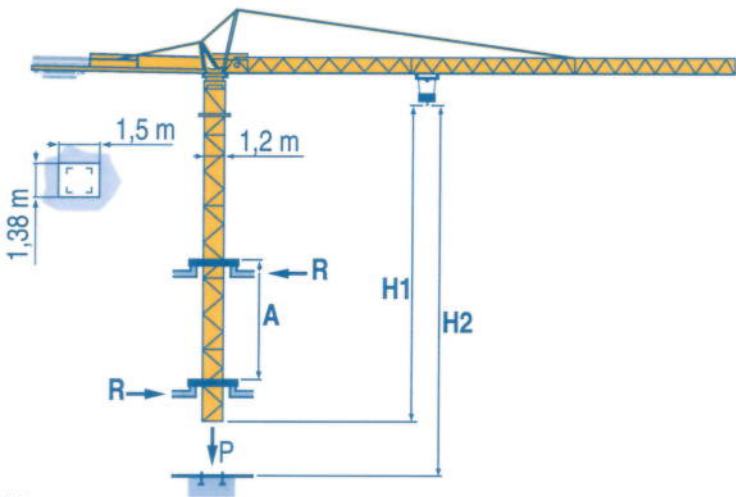
Climbing crane
Telescopage gruas trepadoras



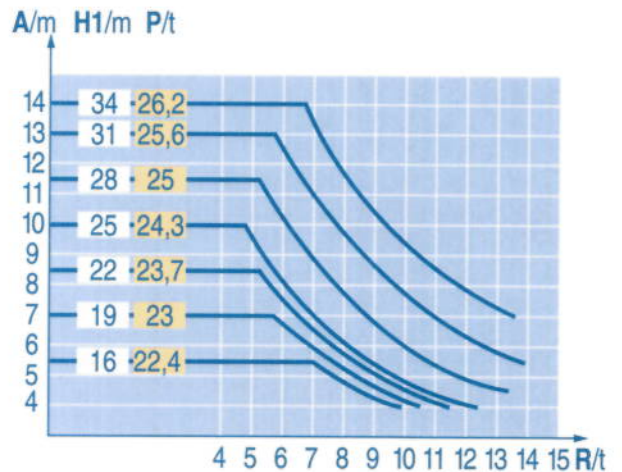
Gru in cavedio
Telescopagem sobre lages



B 125 A



LUK 1



A	Distance entre cadres	F	Abstand zwischen den Rahmen	D	Distance between collars	GB	Distancia entre marcos	E	Distanza fra i telai	I	Distância entre quadros	P
H1	Hauteur grue		Kranhöhe		Crane height		Altura grúa		Altezza gru		Altura da grua	
P	Poids de la grue (en service)		Krangewicht (in Betrieb)		Crane weight (in service)		Peso de la grúa (en servicio)		Peso della gru (in servizio)		Peso da grua (em serviço)	
R	Réaction horizontale		Horizontalkräfte		Horizontal reaction		Reaccion horizontal		Reazione orizzontale		Reacção horizontal	

					ch - PS hp	kW		
	15 PC 13-5	m/min	7,1	21	42	15	11	130 m
		t	2,5	2,5	1,3			
	25 PC 13-7	m/min	7,9	31,5	63	25	18	229 m
		t	2,5	2,5	1,3			
	15 PC 15	m/min	6	18	36	15	11	130 m
		t	3	3	1,5			
	25 PC 15-3	m/min	7	27,5	55	25	18	206 m
		t	3	3	1,5			
	3 D2 V5	m/min	21 - 42			3	2,2	
	RCV 40	tr/min U/min rpm	0 → 0,8			6	4,5	
	TVD 324	m/min	26			2 x 4	2 x 2,9	
	RT 224	m/min	25			2 x 4	2 x 2,9	

CEI 38	IEC 38	kVA	
400 V (+6% -10%) 50 Hz		15 PC : 25 kVA 25 PC : 35 kVA	84/534 - 87/405

LUK 3

	Levage	F	Heben	D	Hoisting	GB	Elevación	E	Sollevamento	I	Elevação	P
	Distribution		Katzfahren		Trolleying		Distribución		Distribuzione		Distribuição	
	Orientation		Schwenken		Slewing		Orientación		Rotazione		Rotação	
	Translation		Kranfahren		Travelling		Traslación		Traslazione		Translação	
	Conforme aux directives CEE 84/534 et 87/405 sur le niveau acoustique		Gemäss EWG-Richtlinien 84/534 und 87/405 für den Schall-Leistungspegel		In compliance with the EEC 84/534 and 87/405 Instructions on noise level		Conforme con las directivas CEE 84/534 y 87/405 sobre el nivel acústico		Conforme alle direttive CEE 84/534 e 87/405 sul livello acustico		Conforme as directivas CEE 84/534 e 87/405 sobre o nível acústico	

<p>Document commercial non contractuel. Pour toute information, please refer to the corresponding instructions.</p> <p>Unverbindliches Vertriebsdokument. Für weitere Informationen, bitte auf die entsprechenden Anweisungen.</p> <p>This commercial document is not legally binding. For any further information, please refer to the corresponding instructions.</p> <p>Documento comercial no contractual. Para cualquier información técnica, ver la noticia correspondiente.</p> <p>Documento commerciale non vincolante, per tutte le informazioni tecniche fare riferimento al catalogo istruzioni</p> <p>Documento comercial não contractual. Para qualquer informação técnica complementar consultar as respectivas instruções</p>	<p>BISCHAG</p> <p>Grienstrasse 17 4227 Büsserach Telefon 061 781 55 11 Fax 061 781 55 12 www.bischag.ch</p>	<p>POTAIN</p> <p>de Charbonnières, B.P. 173 32 ECULLY Cedex 33)04.72.18.20.20 33)04.72.18.20.00 www.potain.com l : mkt@potain.fr</p> <p>MANITOWOC woc Crane Group</p>	<p>Deutschland POTAIN GmbH Tel : 06.1.05.70.40</p> <p>Italia POTAIN S.p.A. Tel : 0.331.49.33.11</p> <p>Portugal POTAIN Portugal Tel : 22.968.08.89</p> <p>Singapore MANITOWOC POTAIN PTE LTD Tel : 227.15.50</p> <p>Copyright.Reproduction interdite © POTAIN 2000</p> <p>CITY CRANE MC 68 B Réf. 2000.36 LUK 7</p>
--	--	---	--